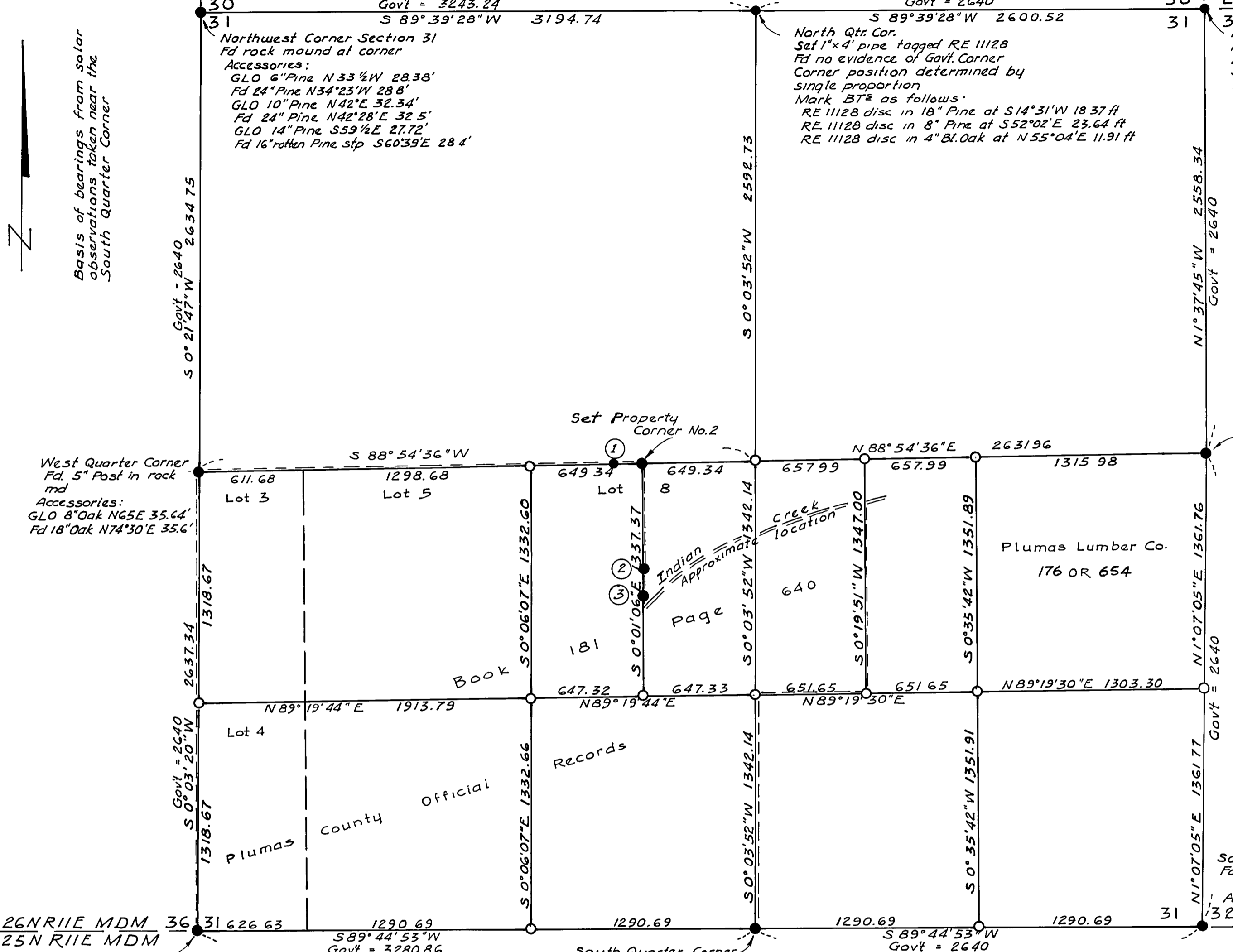


T26N R11E MDM T26N R12E MDM Govt = 2640



Northwest Corner Section 31
Govt = 2640
S 89°39'28"W 3194.74
North Qtr. Cor.
Set 1"x4" pipe tagged RE 11128
Fd no evidence of Govt. Corner
Corner position determined by single proportion
Mark BT as follows:
RE 11128 disc in 18" Pine at S14°31'W 18.37 ft
RE 11128 disc in 8" Pine at S52°02'E 23.64 ft
RE 11128 disc in 4" Bl. Oak at N55°04'E 11.91 ft

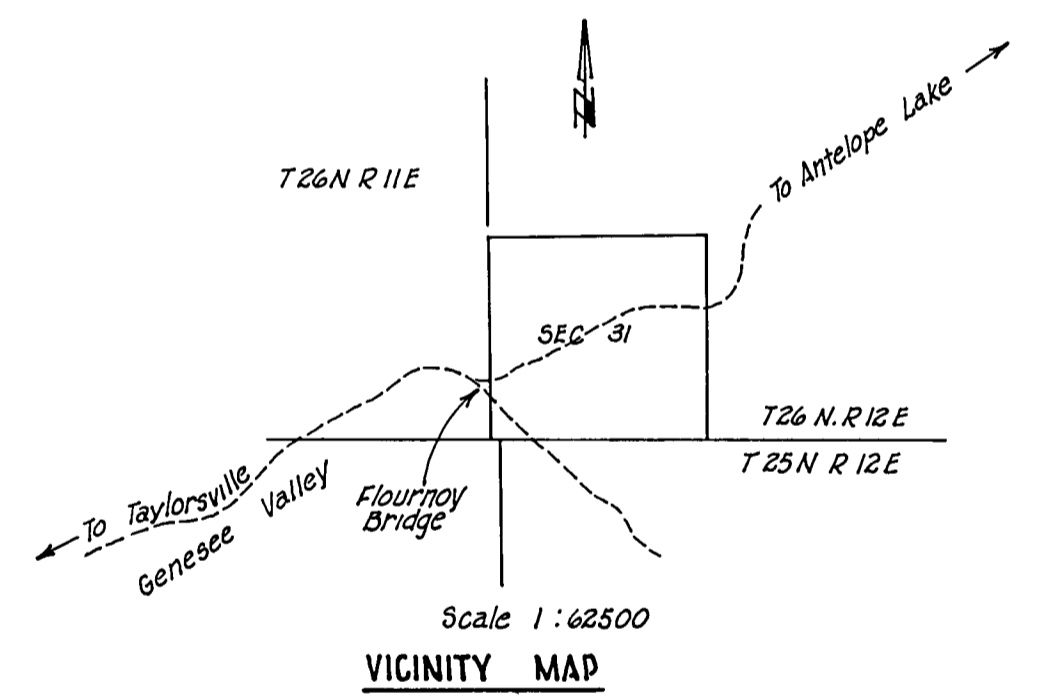
LEGEND
① Double line indicates property line
② 1"x18" pipe tagged RE 11128 set on property line at a point S 88°54'36"W 160.00 ft from Property Corner 2
③ 1"x4" pipe tagged RE 11128 set on property line at a point S 0°01'06"E 601.00 ft from Property Corner 2, and about 100 ft North of County Road
1"x4" pipe tagged RE 11128 set on property line at a point S 0°01'06"E 751.00 ft from Property Corner 2, and about 15 ft North of top of bank of Indian Creek.

Property Corner No. 2
Set 1"x18" IP tagged RE 11128 with witnesses as follows:
RE 11128 tag in 16" Black Oak stub brs N 57°E 15.45 ft
RE 11128 tag in 5" Yellow Pine brs N 64°W 25.00 ft

Govt Denotes Govt measure
GLO Denotes Govt Land Office

● Points found or set as noted
○ Calculated locations

Surveyor's Note
The basis for the length of the South boundary, and the proration of Lots 1 to 8 of Section 31, is the Official Plat of Township 26 North Range 12 East M.D.M., as approved by the Surveyor General's Office on May 4, 1880. The Field Notes of Minto, of July 1880, are found to disagree in overall distance, but tie the Southwest Corner of Section 31 to the Northwest Corner of Section 6 (Closing corner) T 25N R 12E MDM with reasonable tolerances on the ground, being about 182 feet apart, each with Govt bearing trees



Southwest Corner Section 31
Fd 3/4" IP tagged LS 2587
Accessories:
GLO 15" Cedar S15 1/2 E 38.28'
Fd 16" Cedar S19 1/2 E 36.6'
GLO 25" Pine S53°W 30.36'
Fd 30" Pine S53 1/2 W 26.1'
GLO 8" Bl. Oak N60°W 60.06'
Fd 12" Bl. Oak N56°W 58.8'

South Quarter Corner
Set 1"x4" pipe tagged RE 11128
Fd no evidence of Govt Corner
Corner position determined by single proportion, and checks with GLO calls

Southeast Corner Section 31
Fd rock md for corner
Accessories:
GLO 26" Pine N12°W 38.28'
Fd 26" Pine stp at N12°W 38.28' - center slump - basis for corner.
GLO 30" Pine N70°E 40.92'
Fd remains of uprooted Pine down hill from BT position.

SURVEYOR'S CERTIFICATE
This map correctly represents a survey made by me or under my direction in conformance with the requirements of the Land Surveyor's Act at the request of Jerome Page in October 1970

COUNTY SURVEYOR'S CERTIFICATE
This map has been examined for conformance with the requirements of the Land Surveyor's Act this 5th day of May 1971

5054
RECORDER'S CERTIFICATE
Filed this 10th day of May 1971, at 2:15 P.M., in Book 3 of Maps at Page 146 at the request of Co. Engineer Dorothy Neer Pini

Eugene A. Ringel
Eugene A. Ringel RCE 11/28

Darrell P. Payne
County Surveyor, C.E. 8596

County Recorder
County of Plumas

RECORD OF SURVEY OF

SEC 31 T.26 N. R. 12 E M.D.B. & M.
PLUMAS COUNTY, CALIFORNIA
LANDS OF

W.S. & HELGA M. YOUNG &
PLUMAS LUMBER CO.

RINGEL & ASSOCIATES, INC.
ENGINEERS SURVEYORS
331 WALL ST. CHICO, CALIFORNIA

SCALE 1"=500' FEB. 1971