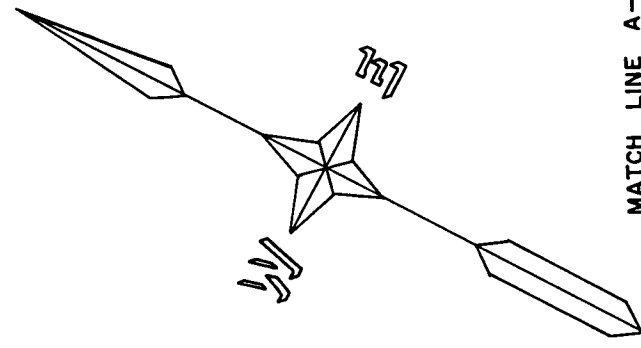


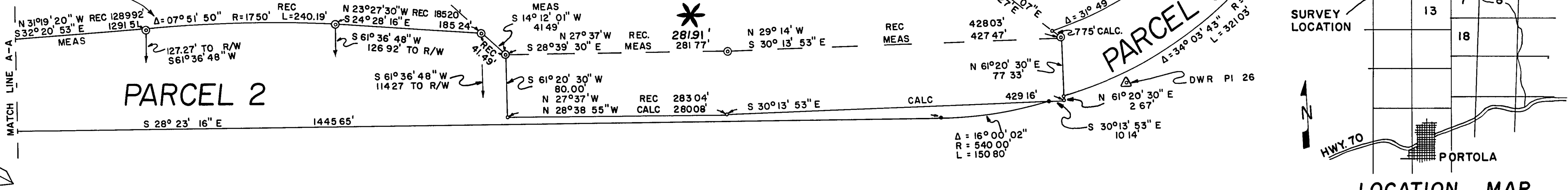
NOTE  
A CIRCULAR CURVE WILL NOT FIT THE FIELD MONUMENTS. DISTANCE AND BEARING BETWEEN FOUND B.C. AND E.C. IS N 28°23' 38" W, 240.74'



CROCKER MOUNTAIN ESTATES

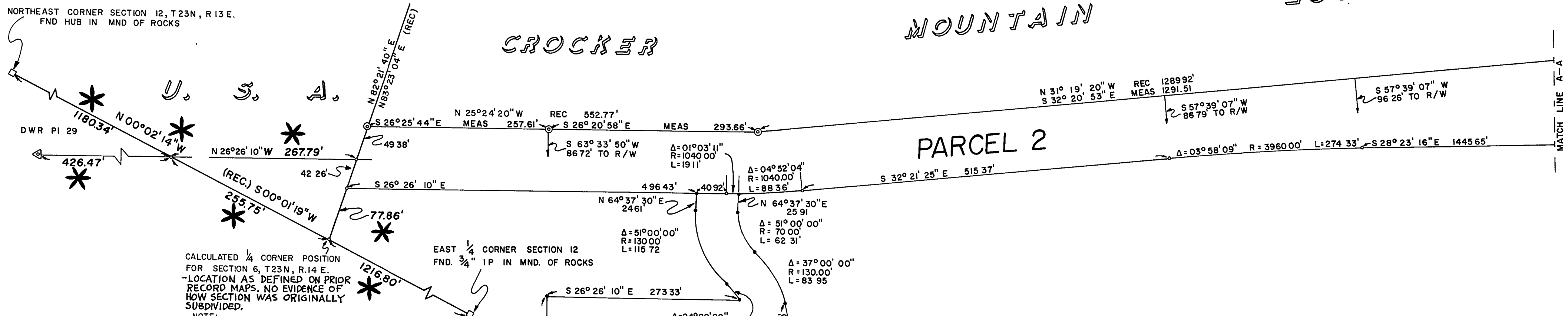
WELCH ESTATES NO. 3 UNIT

TIE TO EAST 1/4 CORNER SECTION 12, T.23N, R.13E  
FND 3/4" IP IN MND OF ROCKS  
N 50°32'47" W  
2402.03'



LOCATION MAP  
SCALE IN MILES

NORTHEAST CORNER SECTION 12, T.23N, R.13E.  
FND HUB IN MND OF ROCKS



CALCULATED 1/4 CORNER POSITION FOR SECTION 6, T.23N, R.14E. -LOCATION AS DEFINED ON PRIOR RECORD MAPS. NO EVIDENCE OF HOW SECTION WAS ORIGINALLY SUBDIVIDED.  
NOTE:

THE BASIS OF BEARING OF THIS MAP IS THE NORTH LINE OF THAT CERTAIN 66.00' WIDE ROADWAY EASEMENT AS SHOWN ON THAT CERTAIN RECORD OF SURVEY MAP FILED IN BOOK 3 OF RECORD OF SURVEYS AT PAGE 101.

THIS MAP AMENDS THAT CERTAIN MAP FILED IN BOOK 3 OF RECORD OF SURVEYS AT PAGE 124

THIS MAP CORRECTLY REPRESENTS A SURVEY MADE BY ME OR UNDER MY DIRECTION IN CONFORMANCE WITH THE REQUIREMENTS OF THE LAND SURVEYORS ACT AT THE REQUEST OF THE PLUMAS COUNTY BOARD OF SUPERVISORS IN OCTOBER 1969

LAWRENCE J. BROCK, R.C.E. 13528  
COUNTY ROAD COMMISSIONER

FILED THIS 10<sup>th</sup> DAY OF May, 1971, AT 10:15  
IN BOOK 3 OF RECORD OF SURVEYS AT PAGE 143  
AT THE REQUEST OF THE PLUMAS COUNTY BOARD OF SUPERVISORS  
FILE NO. 5046

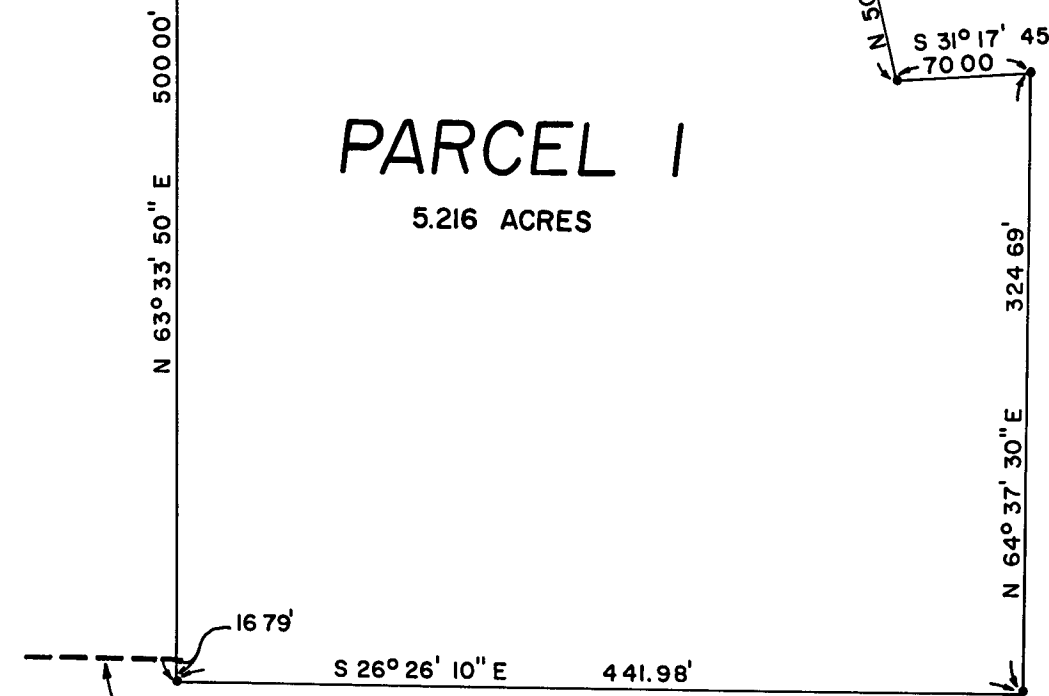
Dorothy New Pini  
COUNTY RECORDER

THIS MAP HAS BEEN EXAMINED FOR CONFORMANCE WITH THE REQUIREMENTS OF THE LAND SURVEYORS ACT THIS 5<sup>th</sup> DAY OF May, 1971.

Darrell P. Payne  
DARRELL P. PAYNE, R.C.E. 8596  
COUNTY ENGINEER

PARCEL 1

5.216 ACRES



GRIZZLY PIPELINE

CROCKER MOUNTAIN ESTATES

PARCEL 2

AMENDED RECORD OF SURVEY MAP

PORTIONS OF SECTION 12, T. 23 N., R. 13 E. & SECTIONS 6 & 7, T. 23 N., R. 14 E., M.D.B. & M.

LEGEND  
SET 3/4" IP TAGGED R.C.E. 7294  
FND IP ON SUBDIVISION BOUNDARY  
FND SECTION CORNER AS DESCRIBED  
FND H&T SET BY DEPT. WATER RES  
CALCULATED CORNER POSITION (NOTHING SET)

ABBREVIATIONS  
RECORD  
CALCULATED  
MEASURED  
DEPARTMENT OF WATER RESOURCES-DWR  
AMENDMENTS TO ORIGINAL MAP

PLUMAS COUNTY, CALIFORNIA  
OWNER: CAL-SIERRA TITLE CO.  
SCALE 1"=100' APRIL 1969

SURVEYED AT THE REQUEST OF

THE PLUMAS COUNTY BOARD OF SUPERVISORS