

**CITY CERTIFICATE**

LOT SPLIT AS SHOWN APPROVED BY  
CITY OF PORTOLA PLANNING COMMISSION

THIS 15 DAY OF MAY 1970.

John P. Thompson  
CHAIRMAN

**COUNTY SURVEYOR'S CERTIFICATE**

THIS MAP HAS BEEN EXAMINED FOR CONFORMANCE WITH  
THE REQUIREMENTS OF THE LAND SURVEYOR'S ACT

THIS 17<sup>TH</sup> DAY OF JUNE 1970.

Darrell P. Payne  
DARRELL P. PAYNE RCE 8596

**RECORDERS CERTIFICATE**

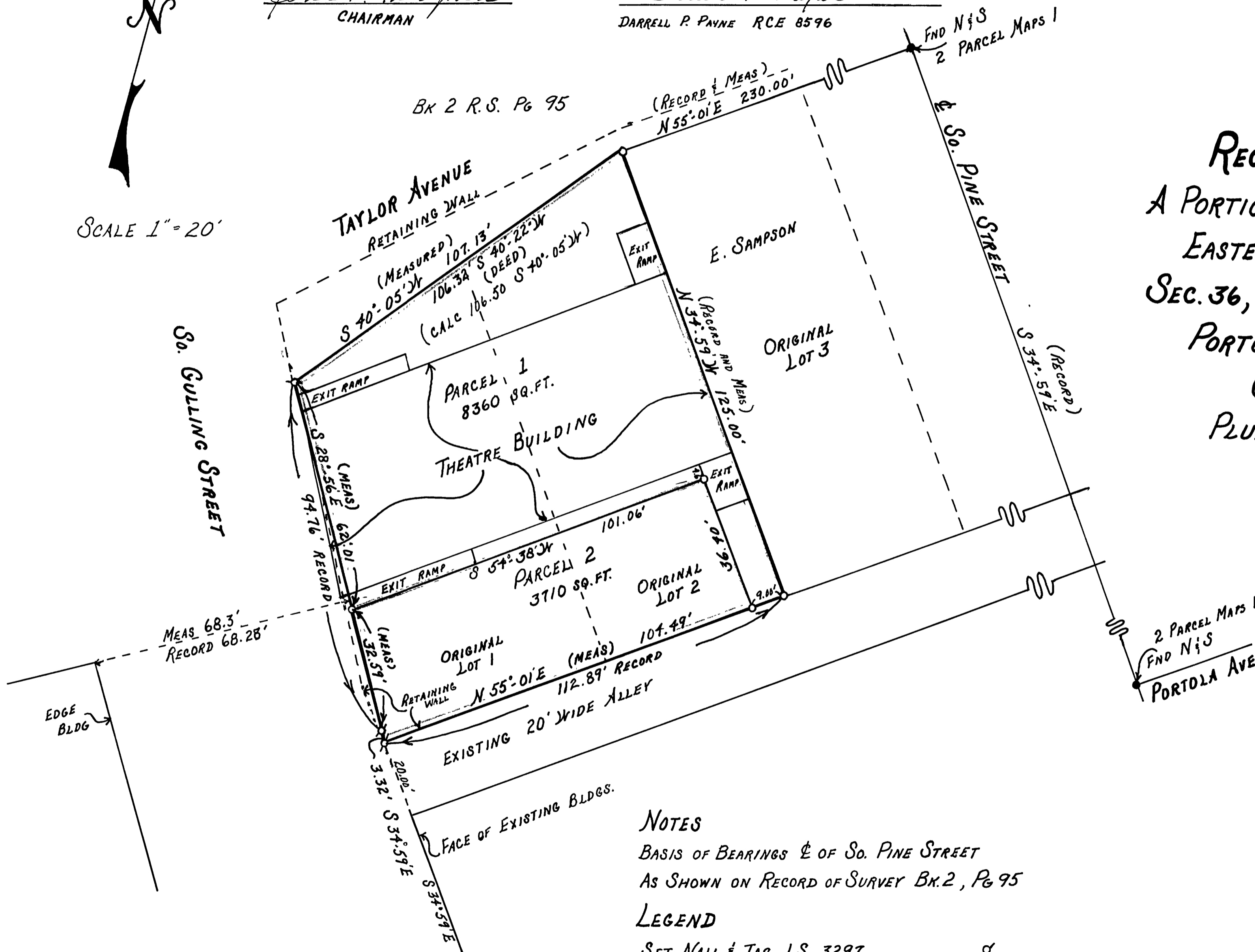
FILED THIS 18 DAY OF JUNE 1970 AT 3:30 P.M.  
IN BOOK 3 OF RECORD OF SURVEYS, AT Pg 137

AT THE REQUEST OF GERALD C. HENDERSON.

RECORDING No. 5096 FEE \$5.00

Ida Hogan Jewell  
COUNTY RECORDER

SCALE 1" = 20'



**RECORD OF SURVEY**  
A PORTION OF PORTOLA TOWNSITE  
EASTERN ADDITION - BLOCK 7  
SEC. 36, T. 23 N., R. 13 E., M.D. B. & M.  
PORTOLA THEATRE CO. INC.  
CITY OF PORTOLA  
PLUMAS COUNTY CALIFORNIA

**SURVEYOR'S CERTIFICATE**

THIS MAP CORRECTLY REPRESENTS A SURVEY  
MADE BY ME OR UNDER MY DIRECTION IN  
CONFORMANCE WITH THE REQUIREMENTS OF  
THE LAND SURVEYORS ACT AT THE REQUEST OF  
PORTOLA THEATRE CO. INC. IN MAY 1970.

Gerald C. Henderson  
GERALD C. HENDERSON L.S. 3297

**NOTES**

BASIS OF BEARINGS & OF So. PINE STREET  
AS SHOWN ON RECORD OF SURVEY Bk. 2, Pg 95

**LEGEND**

- SET NAIL & TAG LS 3297      ✕
- SET 1" IP TAGGED LS 3297      ○
- FND MONUMENTS AS SHOWN      ●

GERALD C. HENDERSON  
LICENSED LAND SURVEYOR  
BOX 13, PORTOLA CALIFORNIA 96122