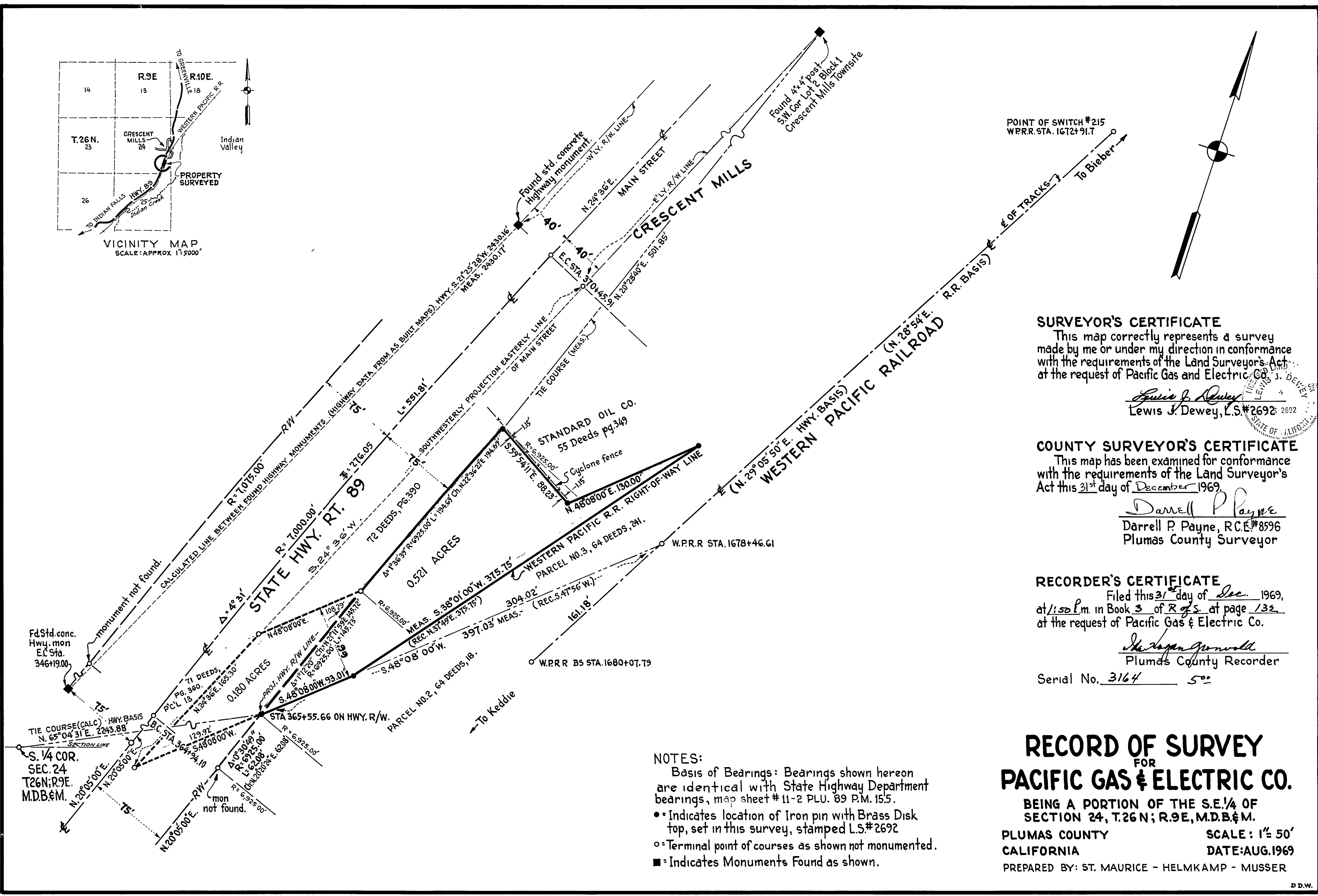
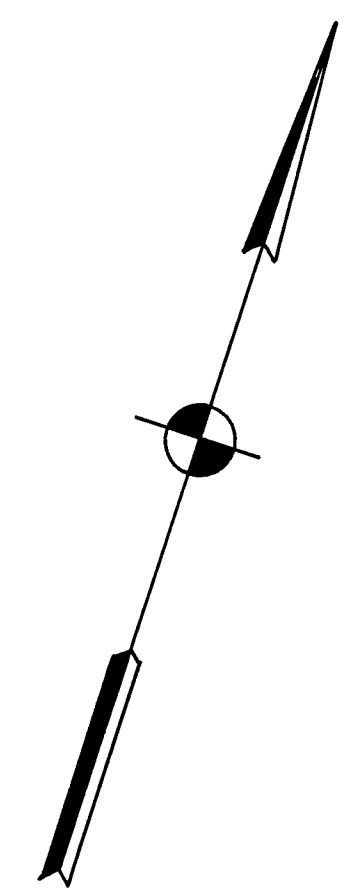


VICINITY MAP
SCALE: APPROX 1"=5000'



POINT OF SWITCH #215
W.P.R.R. STA. 1672+91.7



SURVEYOR'S CERTIFICATE

This map correctly represents a survey made by me or under my direction in conformance with the requirements of the Land Surveyor's Act at the request of Pacific Gas and Electric Co.

Lewis J. Dewey
Lewis J. Dewey, L.S.#2692 2692
STATE OF CALIFORNIA

COUNTY SURVEYOR'S CERTIFICATE

This map has been examined for conformance with the requirements of the Land Surveyor's Act this 31st day of December 1969.

Darrell P. Payne
Darrell P. Payne, R.C.#8596
Plumas County Surveyor

RECORDER'S CERTIFICATE

Filed this 31st day of Dec. 1969, at 1:50 P.M. in Book 3 of R.G.S. at page 132 at the request of Pacific Gas & Electric Co.

Shirley J. Powell
Plumas County Recorder
Serial No. 3164 50

NOTES:

- Basis of Bearings: Bearings shown hereon are identical with State Highway Department bearings, map sheet #11-2 PLU. 89 P.M. 15.5.
- * Indicates location of Iron pin with Brass Disk top, set in this survey, stamped L.S.#2692
- o = Terminal point of courses as shown not monumented.
- = Indicates Monuments Found as shown.

RECORD OF SURVEY
FOR
PACIFIC GAS & ELECTRIC CO.

BEING A PORTION OF THE S.E. 1/4 OF SECTION 24, T.26N; R.9E, M.D.B. & M.

PLUMAS COUNTY CALIFORNIA
SCALE: 1"= 50'
DATE: AUG. 1969
PREPARED BY: ST. MAURICE - HELMKAMP - MUSSER