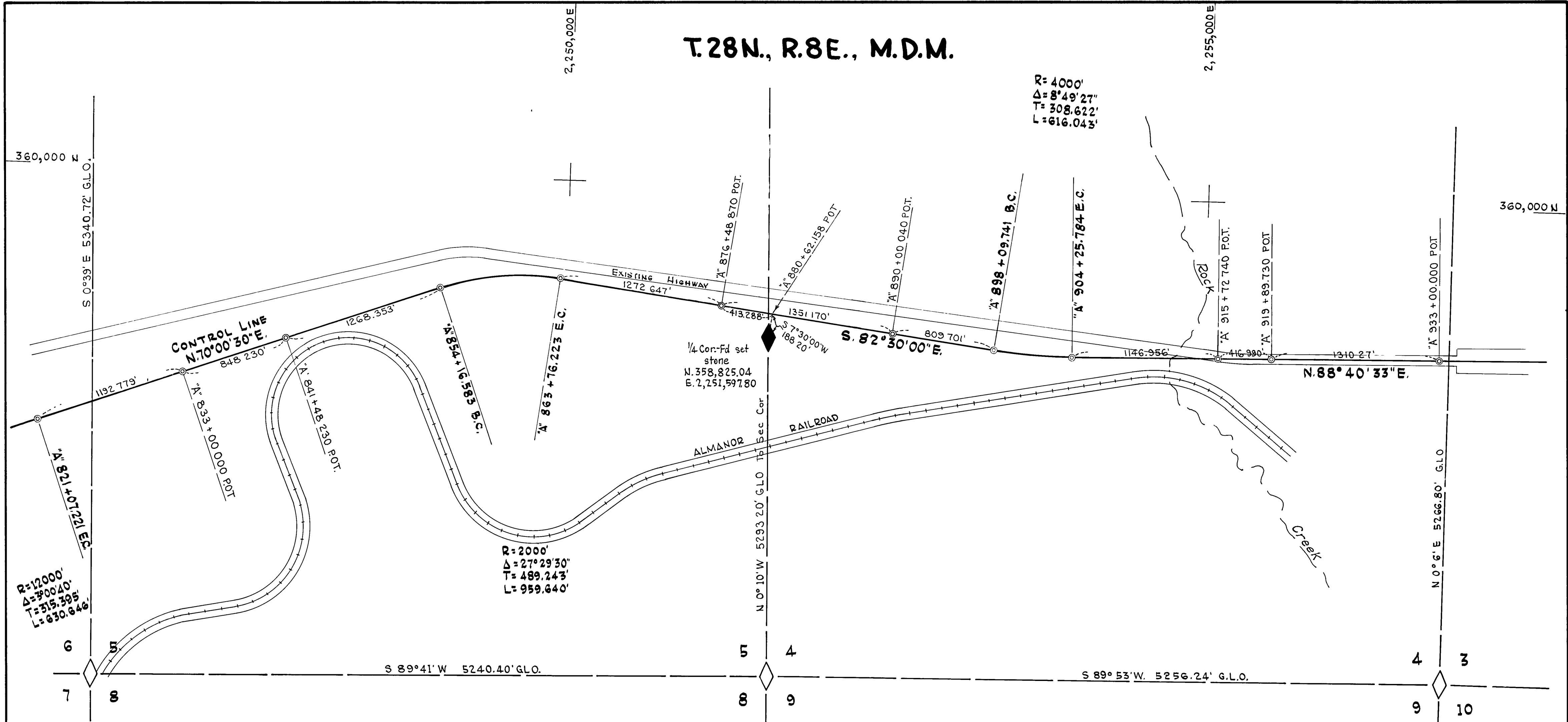


T.28N., R.8E., M.D.M.



R=4000'  
 $\Delta=8^{\circ}49'27''$   
 T=308.622'  
 L=616.045'

R=12000'  
 $\Delta=9^{\circ}00'40''$   
 T=315.395'  
 L=630.646'

R=2000'  
 $\Delta=27^{\circ}29'30''$   
 T=489.243'  
 L=959.640'

1/4 Cor-Fd set  
 stone  
 N. 358,825.04  
 E. 2,251,597.80

BASIS OF BEARING: GRID NORTH  
 BASED ON U.S.C. & G.S. TRIP STAS  
 "CHESTER," "GOULD," & "KEATH"

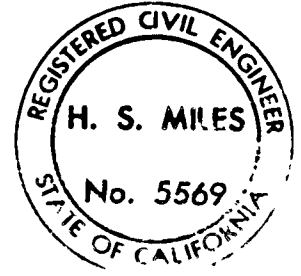
LEGEND

- ◆ FOUND SECTION CORNER
- ◇ UNCONFIRMED CORNER
- ⊙ TEMPORARY MONUMENT SET OR TO BE SET BY  
 MAY, 1963 AND MARKED WITH R.E. TAG  
 - TO BE REPLACED WITH CONCRETE MONUMENT  
 WITH BRASS CAP UPON HIGHWAY CONSTRUCTION.

EXCEPTING THOSE SHOWN OTHERWISE, ALL DISTANCES  
 AND BEARINGS ARE BASED ON CALIFORNIA COORDINATE  
 SYSTEM, ZONE I. DIVIDE GRID DISTANCES SHOWN BY  
 .9997011 TO OBTAIN GROUND LEVEL DISTANCES

**SURVEY OF A  
 CONTROL LINE  
 FOR  
 STATE HIGHWAY PURPOSES  
 SEC. 4 & 5 - T.28 N., R. 8 E., MDM  
 PLUMAS COUNTY, CALIFORNIA  
 SCALE 1" = 500'**

THIS MAP CORRECTLY REPRESENTS A SURVEY MADE  
 BY ME OR UNDER MY DIRECTION IN CONFORMANCE WITH  
 THE REQUIREMENTS OF CHAPTER 15 OF DIVISION 3 OF THE  
 BUSINESS AND PROFESSIONS CODE AT THE REQUEST OF  
 CALIFORNIA DIVISION OF HIGHWAYS IN 1962-1963  
 H.S. MILES, R.E. 5569



THIS MAP HAS BEEN EXAMINED FOR  
 CONFORMANCE WITH THE REQUIREMENTS  
 OF CHAPTER 15 OF DIVISION 3 OF THE  
 BUSINESS AND PROFESSIONS CODE  
 THIS 14<sup>th</sup> DAY OF March 1963  
 James G. Hanagan  
 COUNTY SURVEYOR

#3280  
 FILED FOR RECORD THIS  
 14<sup>th</sup> DAY OF March, 1963  
 AT 2:32 PM IN BOOK 2  
 OF R.O.S. AT PAGE 105, AT  
 THE REQUEST OF State of  
 California  
 S.A. Rogan Powell  
 COUNTY RECORDER