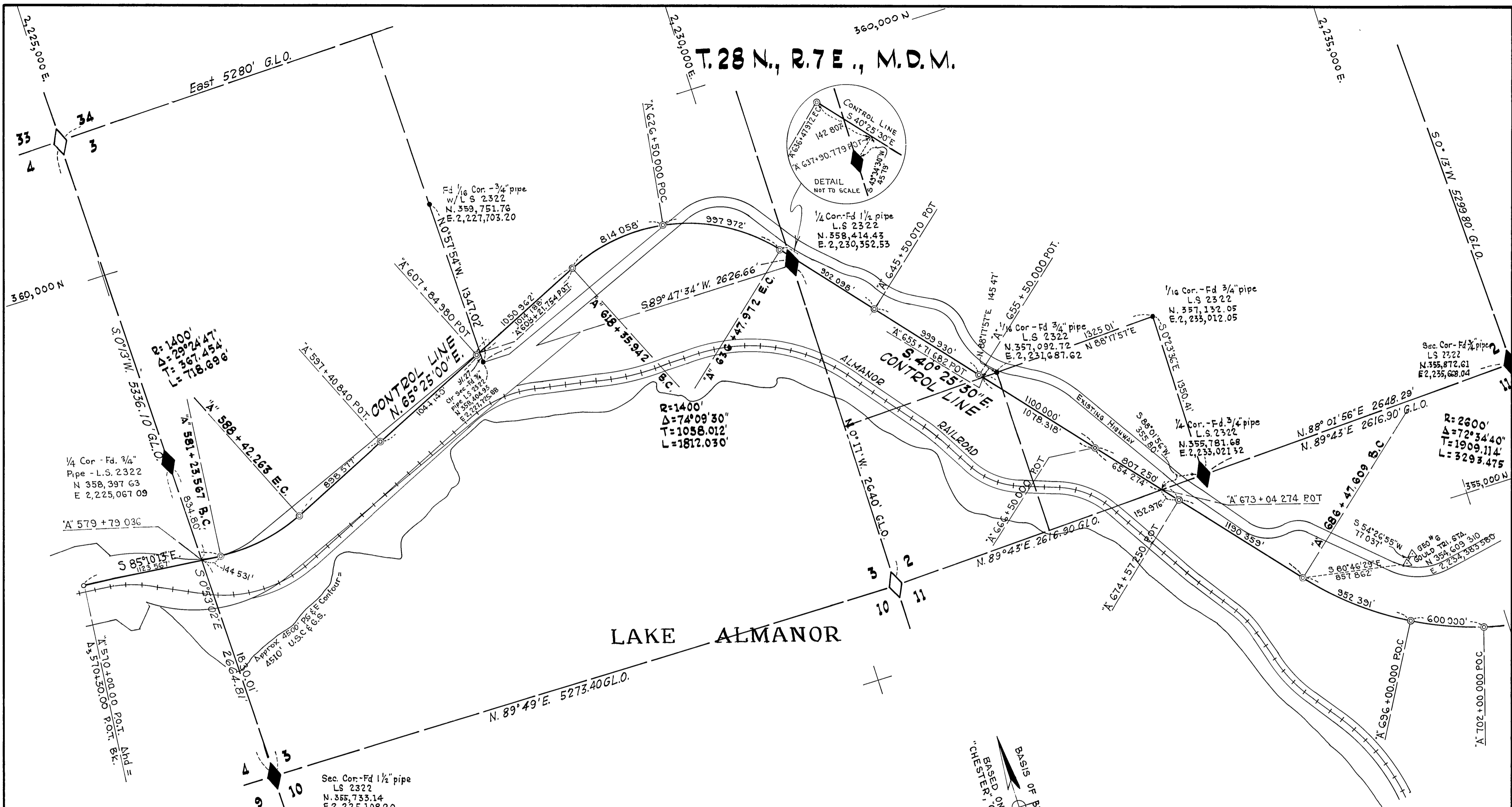


T. 28 N., R. 7 E., M.D.M.



**LEGEND**

- ◆ • FOUND RECORD CORNER
- ◇ UNCONFIRMED CORNER
- ⊙ TEMPORARY MONUMENT SET OR TO BE SET BY MAY, 1963 AND MARKED WITH R. E. TAG - TO BE REPLACED WITH CONCRETE MONUMENT WITH BRASS CAP UPON HIGHWAY CONSTRUCTION.

EXCEPTING THOSE SHOWN OTHERWISE, ALL DISTANCES AND BEARINGS ARE BASED ON CALIFORNIA COORDINATE SYSTEM, ZONE I DIVIDE GRID DISTANCES SHOWN BY .9997118 TO OBTAIN GROUND LEVEL DISTANCES

**SURVEY OF A CONTROL LINE**  
FOR  
**STATE HIGHWAY PURPOSES**  
SEC. 2, 3 & 11 - T. 28 N., R. 7 E., M.D.M.  
PLUMAS COUNTY, CALIFORNIA  
SCALE 1" = 500'

THIS MAP CORRECTLY REPRESENTS A SURVEY MADE BY ME OR UNDER MY DIRECTION IN CONFORMANCE WITH THE REQUIREMENTS OF CHAPTER 15 OF DIVISION 3 OF THE BUSINESS AND PROFESSIONS CODE AT THE REQUEST OF CALIFORNIA DIVISION OF HIGHWAYS IN 1962-1963



H. S. MILES, R.E. 5569

THIS MAP HAS BEEN EXAMINED FOR CONFORMANCE WITH THE REQUIREMENTS OF CHAPTER 15 OF DIVISION 3 OF THE BUSINESS AND PROFESSIONS CODE THIS 14<sup>TH</sup> DAY OF March 1963

*James T. Hamagun*  
COUNTY SURVEYOR

# 3278

FILED FOR RECORD THIS 14<sup>TH</sup> DAY OF March 1963 AT 2:30 P.M. IN BOOK 2 OF ROLL AT PAGE 103 AT THE REQUEST OF State of California  
*John Robert Gronwald*  
COUNTY RECORDER