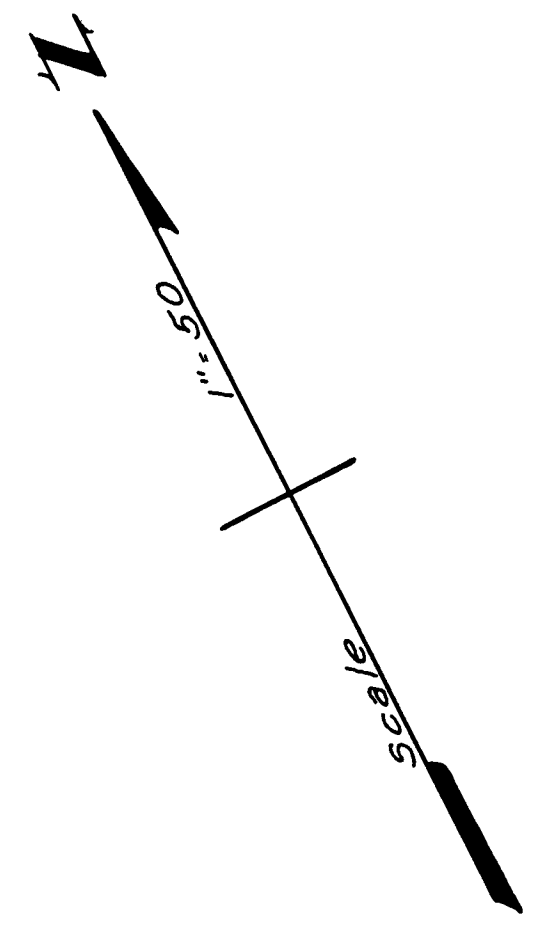
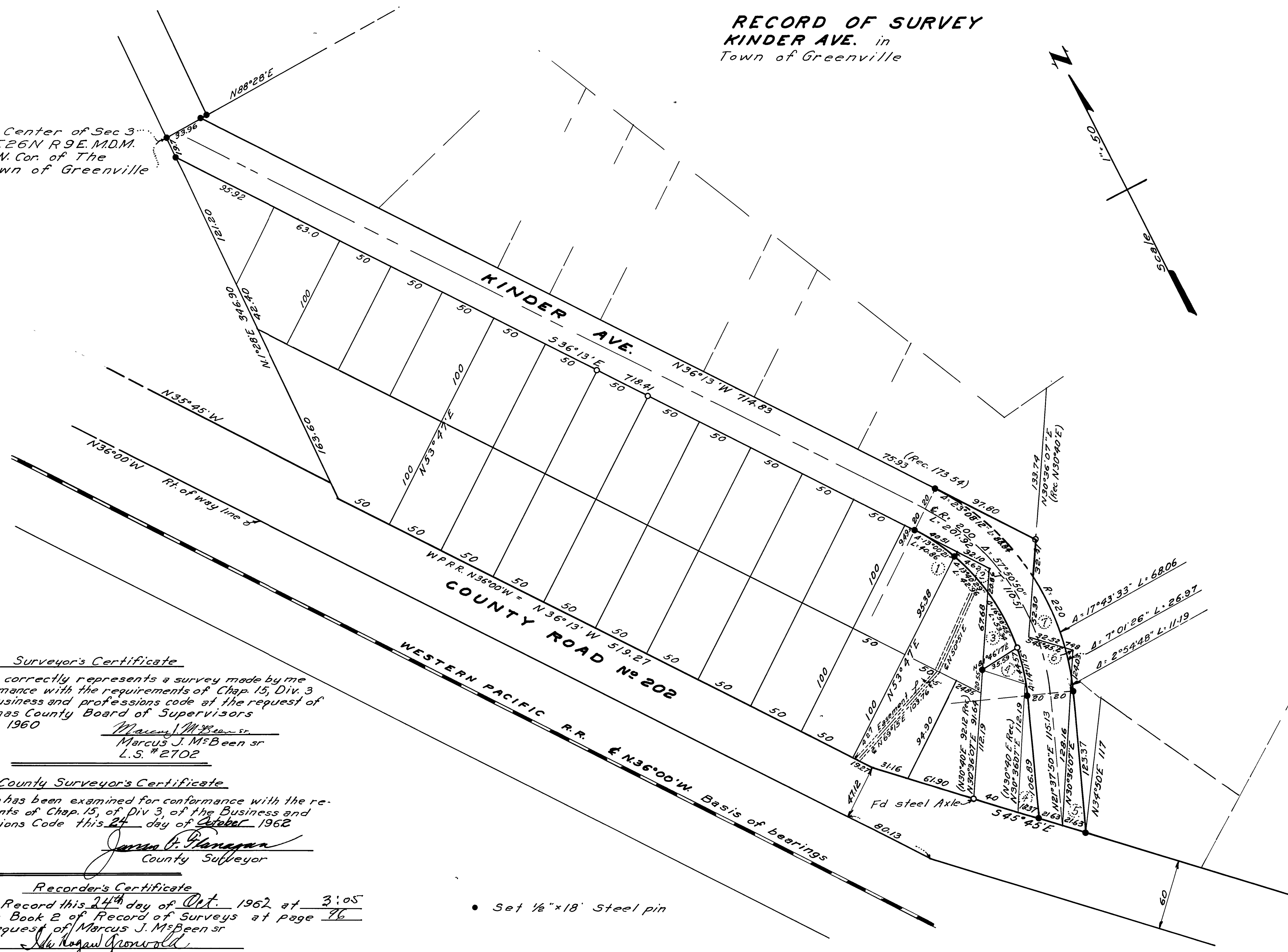


RECORD OF SURVEY KINDER AVE. in Town of Greenville



Center of Sec 3
T.26N R.9E. M.D.M.
N.W. Cor. of The
Town of Greenville



Surveyor's Certificate

This map correctly represents a survey made by me in conformance with the requirements of Chap. 15, Div. 3 of the Business and Professions Code at the request of The Plumas County Board of Supervisors

Marcus J. McBeen sr.
Marcus J. McBeen sr.
L.S. #2702

County Surveyor's Certificate

This map has been examined for conformance with the requirements of Chap. 15, of Div 3, of the Business and Professions Code this 24 day of October 1962

James O. Hanagan
County Surveyor

Recorder's Certificate

Filed for Record this 24th day of Oct. 1962 at 3:05 P.m. in Book 2 of Record of Surveys at page 96 at the request of Marcus J. McBeen sr.

Shirley Ann Gronwald
County Recorder

• Set 1/2" x 18' Steel pin