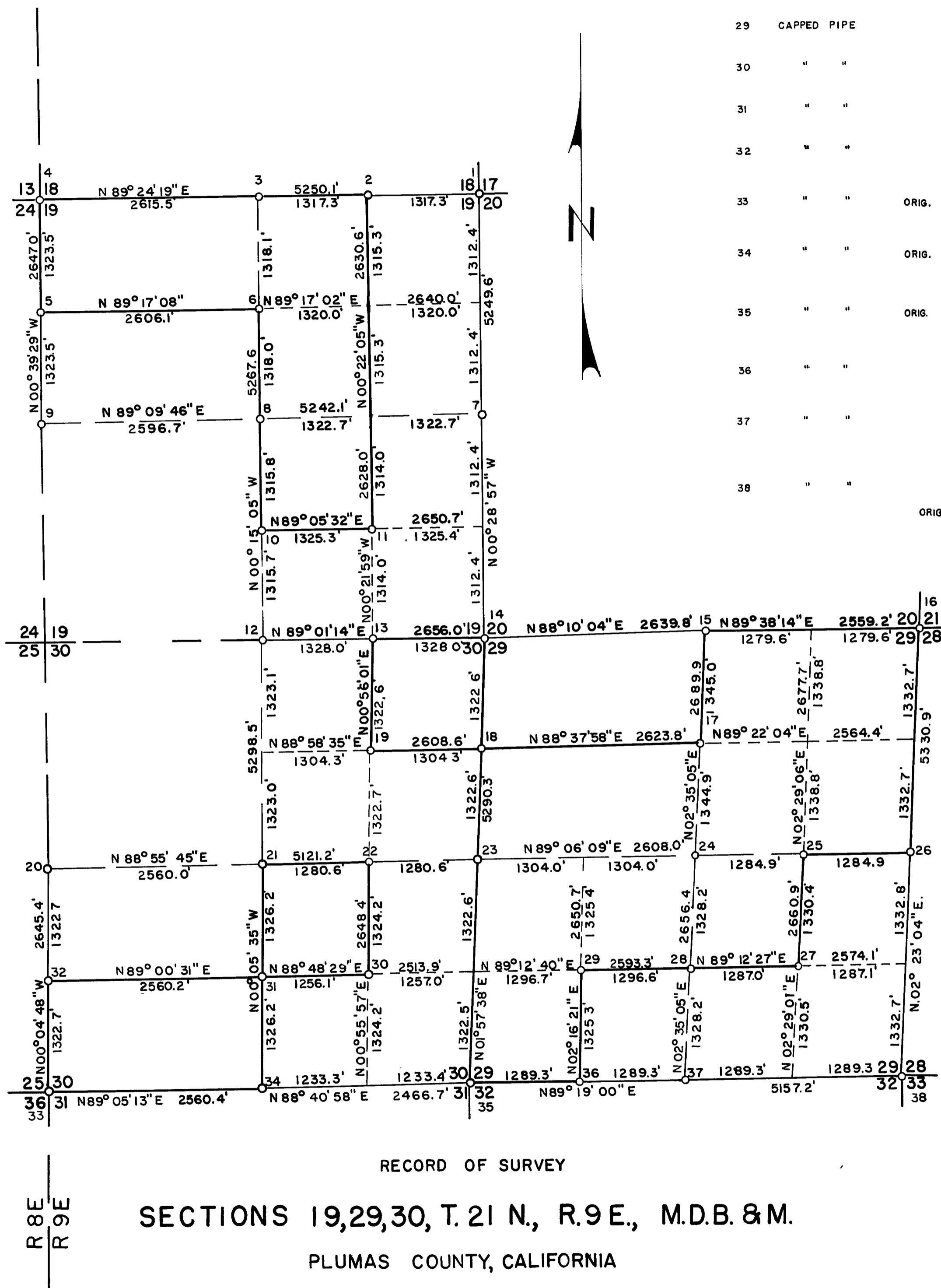


CORNER LEGEND		
NUMBER	DESCRIPTION	WITNESS TREES
1	CAPPED PIPE	4" WF N 55° E 61.7' 6" WF S 2° E 37.1' 16" DF S 70° W 63.2' 14" PP N 88° W 76.5'
2	" "	12" BO N 43° E 12.7' 16" WF S 52° E 28.9'
3	" "	18" SP N 53° W 22.5' 22" WF S 61° W 8.8'
4	46" IC. ORIG.	12" SP N 31° E 31.7' 8" DF N 34° W 24.5' 10" WF S 26° E 21.0' 16" WF S 76° W 21.5'
5	CAPPED PIPE	14" WF S 21/2° W 37.7' 26" IC N 77° W 33.0' 16" WF S 57 1/2° E 45.1'
6	" "	16" WF N 34° W 12.9' 14" WF S 59 1/2° W 23.0'
7	" "	12" RF S 20° W 18.4' 16" WF S 45° E 19.3'
8	STAKE & STONE MND	12" WF S 22° E 12.9' 16" WF N 59° W 26.1'
9	CAPPED PIPE ORIG.	30" WF N 44 1/2° E 7.3' 28" WF S 7 1/2° E 15.2'
10	" "	22" WF S 1 1/2° E 13.8' 26" WF S 78° E 27.6'
11	" "	30" DF S 47° E 4.3' 28" WF N 40° E 18.3'
12	" " ORIG	18" PP N 18° E 59.3' 16" IC S 80° E 23.8'
13	" "	24" WF S 46° E 18.7' 18" WF N 39° E 28.2'
14	" " ORIG.	16" WF N 18° E 16.3' 18" WF N 43° W 16.7' 6" WF S 51° W 19.5' 8" WF S 2 1/2° E 32.5'
15	" " ORIG.	12" WF S 15° E 40.3' 10" IC N 51° E 52.5'
16	" " ORIG	18" WF N 33° W 17.4' 10" WF N 33° E 15.7' 12" WF S 71° E 23.8'
17	" " ORIG.	32" PP S 40° W 7.9' 12" SP S 31° W 17.5' 16" SP N 65° W 25.1'
18	" "	10" WF N 52° W 6.4' 14" WF N 26° E 24.7'
19	" "	8" WF N 33° W 27.7' 10" SP N 53° E 17.6'
20	" " ORIG.	42" FIR S 45 1/2° E 35.0' 22" WF N 4° W 41.8'
21	" "	20" DF S 31° W 16.4' 14" IC S 45° E 18.2'
22	" "	8" DF N 86° W 23.3' 18" WF N 23° E 29.1'
23	" "	16" WF N 29° E 25.6' 12" WF N 69° W 19.7'
24	" "	6" SP S 35° E 9.6' 8" WF S 82° E 27.8'
25	" "	24" IC N 12° W 10.5' 14" WF N 82° W 24.0'
26	" "	8" DF S 60° W 11.3' 10" WF S 29° E 11.1'
27	" "	18" WF N 25 1/2° E 13.0' 16" WF S 5° E 27.5'
28	" "	8" IC N 10° E 14.8' 12" WF S 64 1/2° W 24.1'



CORNER LEGEND CONT'D

29	CAPPED PIPE	36" IC N 4° E 33.5' 14" WF N 70 1/2° W 36.3'
30	" "	20" IC N 15° E 11.0' 20" DF N 50° W 48.1'
31	" "	16" IC N 44° W 9.6' 12" DF S 4° W 10.4'
32	" "	8" SP N 72° W 4.3' 6" WF N 56° E 13.6'
33	" " ORIG.	60" PP N 57 3/4° E 38.9' 27" SP S 73 1/2° E 62.7' 3" BO N 10 1/4° W 24.4'
34	" " ORIG.	10" DF N 37° E 25.1' 12" DF S 2° E 26.3'
35	" " ORIG.	18" WF S 70° W 8.0' 12" DF S 41 1/2° E 29.2' 12" DF N 48° W 15.2' 16" DF N 20° E 29.9'
36	" "	8" WF S 77° W 33.2' 16" WF N 7° E 26.8'
37	" "	12" SP N 84° E 36.0' 10" PP N 11 1/2° W 21.8' 10" IC S 14° W 44.8'
38	" "	16" WF S 63° W 45.5' 16" DF N 15° W 30.4' 14" WF N 46° E 38.9' ORIG. 44" DF S 80° E 17.2'

SURVEYOR'S CERTIFICATE:  
THIS MAP CORRECTLY REPRESENTS A SURVEY MADE BY ME OR UNDER MY DIRECTION IN CONFORMANCE WITH THE REQUIREMENTS OF CHAPTER 15 OF DIVISION 3 OF THE BUSINESS AND PROFESSIONS CODE AT THE REQUEST OF THE SOPER-WHEELER COMPANY IN FEBRUARY 1962.

*Jack E. Larson*  
L.S. 2670

COUNTY SURVEYOR'S CERTIFICATE:  
THIS MAP HAS BEEN EXAMINED FOR CONFORMANCE WITH THE REQUIREMENTS CHAPTER 15 OF DIVISION 3 OF THE BUSINESS AND PROFESSIONS CODE THIS 23<sup>rd</sup> DAY OF May, 1962.

*James B. Flanagan*  
COUNTY SURVEYOR

RECORDER'S CERTIFICATE:  
FILED FOR RECORD THIS 23<sup>rd</sup> DAY OF MAY 1962, AT 1:47 P.M. IN BOOK 2 OF Ref. S. AT PAGE 83 AT THE REQUEST OF *Jack E. Larson*

*Harold J. Powell*  
COUNTY RECORDER

SECTIONS 19, 29, 30, T. 21 N., R. 9 E., M.D.B. & M.

PLUMAS COUNTY, CALIFORNIA

SCALE: 1" = 1000'