

**SURVEYOR'S CERTIFICATE:**

THIS MAP CORRECTLY REPRESENTS A SURVEY MADE BY ME OR UNDER MY DIRECTION IN CONFORMANCE WITH THE REQUIREMENTS OF CHAPTER 15 OF DIVISION 3 OF THE BUSINESS AND PROFESSIONS CODE AT THE REQUEST OF THE SOPER-WHEELER COMPANY IN FEBRUARY 1962.

*Jack E. Larson*  
L.S. 2670

**COUNTY SURVEYOR'S CERTIFICATE:**

THIS MAP HAS BEEN EXAMINED FOR CONFORMANCE WITH THE REQUIREMENTS CHAPTER 15 OF DIVISION 3 OF THE BUSINESS AND PROFESSIONS CODE THIS 23<sup>rd</sup> DAY OF May, 1962.

*James E. Hansen*  
COUNTY SURVEYOR

3574

**RECORDER'S CERTIFICATE:**

FILED FOR RECORD THIS 23<sup>rd</sup> DAY OF May, 1962, AT 1:46 P.M. IN BOOK 2 OF R. of S. AT PAGE 82 AT THE REQUEST OF Jack E. Larson

*Ida Hogan Jonowold*  
COUNTY RECORDER

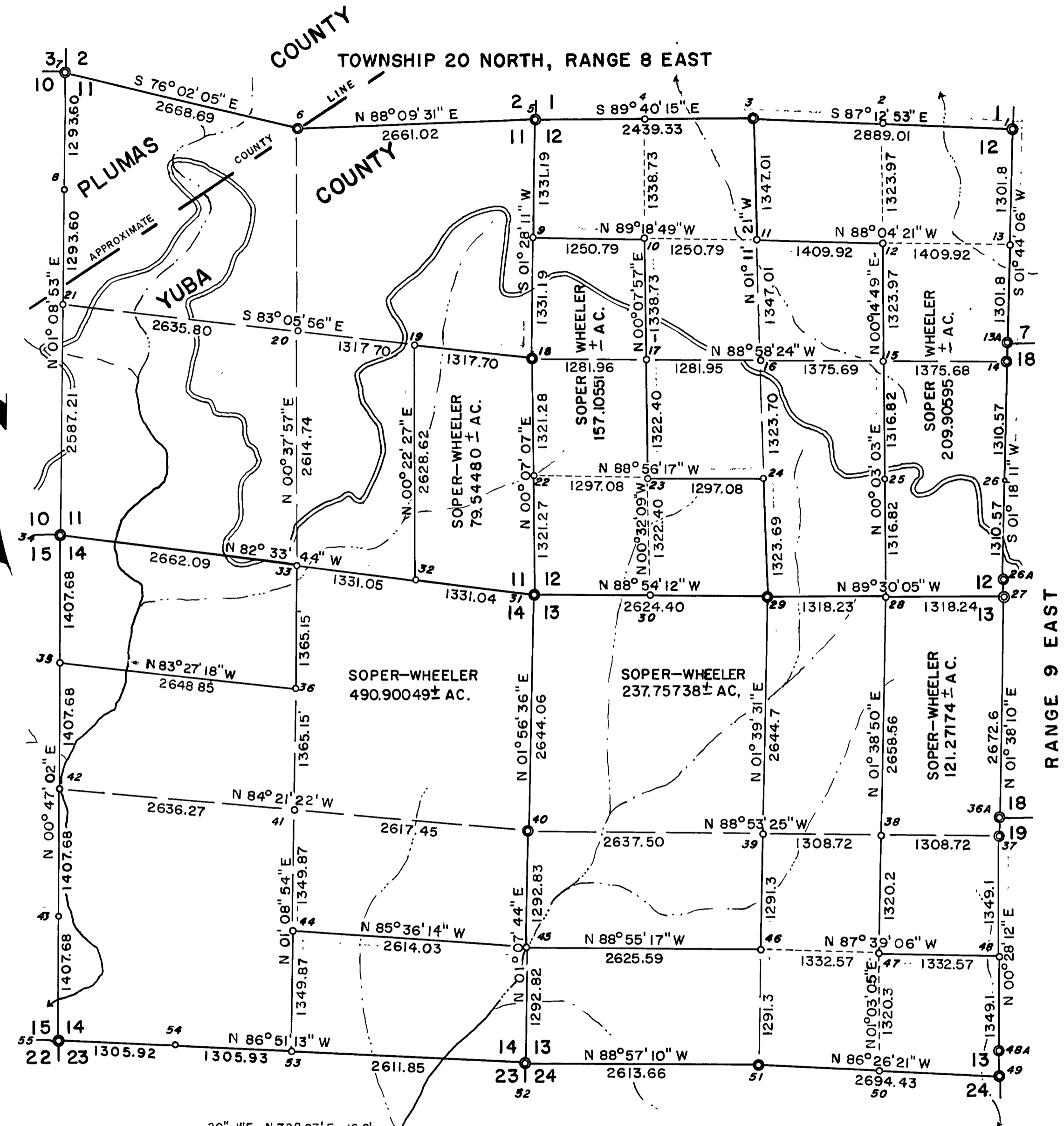
COPPER TABS STAMPED L.S. 2670

**CORNER LEGEND**

CORNER NUMBER	DESCRIPTION	WITNESS TREES SCRIBED
1 FOUND	1 1/2" PIPE BRASS CAPPED (U.S.G.L.O.S. 1939)	10" D.F. N. 40° W. 22.9' 28" W.F. S. 56° W. 66.0'
2	NO MONUMENT	16" C. N. 42° W. 5.5' 10" W.F. S. 63° E. 5.5' 28" B.O. N. 30° E. 30'
3 ESTABLISHED	3/4" PIPE COPPER TAB ORIGINAL	24" TWIN B.O. S. 45° E. 6.8'
4	NO MONUMENT	40" W.F. N. 73° W. 62.0' 40" D.F. S. 34° W. 11.9'
5 "	3/4" PIPE COPPER TAB ORIGINAL	30" D.F. S. 75 1/2° E. 58.1' 16" D.F. SNAG N. 78° E. 63.4' 50" W.F. S. 12° E. 10.6' 28" W.F. N. 48° E. 18.5'
6 "	3/4" PIPE COPPER TAB ORIG	16" D.F. S. 14° W. 35.5' 50" D.F. N. 56° E. 81.8' ORIG
7 3/4" PIPE COPPER TAB ESTABLISHED	ORIGINAL 40" W.F. N. 56° W. 26.5' 36" D.F. S. 48° E. 40.5'	42" D.F. N. 83° 55' W. 68.4' (STUMP) 30" D.F. S. 3° 27' E. 44.3'
8 "	3/4" PIPE COPPER TAB	6" D.F. S. 70° E. 15.5' 18" C. N. 42° W. 5.9'
9 "	3/4" PIPE COPPER TAB	10" D.F. N. 24° E. 32.0' 18" D.F. S. 50° E. 37.0'
10 "	3/4" PIPE COPPER TAB	6" D.F. N. 12° W. 35.4' 38" D.F. S. 32° E. 11.2'
11 "	3/4" PIPE CAPPED	14" W.F. N. 24° W. 27.4' 8" D.F. S. 55° W. 17.4' 8" W.F. N. 22° W. 30.6'
12 "	3/4" PIPE CAPPED	18" W.F. N. 84° W. 14.3'
13 "	3/4" PIPE COPPER TAB	28" W.F. WEST 64.0' 16" W.F. N. 4° E. 72.0' 18" W.F. S. 20° E. 12.5' 14" W.F. S. 26° W. 20.8'
13A FOUND	BRASS CAP U.S.G.L.O.S. 1939	
14 "	U.S.G.L.O.S. 1" PIPE BRASS CAPPED 1939	
15 ESTABLISHED	3/4" PIPE COPPER TAB	

**CORNER LEGEND, CONTINUED**

16 ESTAB.	NO MONUMENT	14" W.F. S. 72° W. 42.0'
17 "	3/4" PIPE COPPER TAB	14" W.F. N. 55° W. 37.5'
18 "	3/4" PIPE COPPER TAB	66" S.P. N. 87° W. 36.0'
19 "	3/4" PIPE COPPER TAB	10" C. N. 22° E. 32.8'
20 "	NO MONUMENT	10" W.F. S. 63° E. 13.6'
21 "	NO MONUMENT	
22 "	NO MONUMENT	12" D.F. S. 60° W. 5.9'
23 "	3/4" PIPE COPPER TAB	14" D.F. N. 40° E. 3.5'
24 "	3/4" PIPE COPPER TAB	18" W.F. S. 7° W. 33.6'
25 "	3/4" PIPE COPPER TAB	18" B.O. N. 12° E. 17.8'
26 "	3/4" PIPE COPPER TAB	12" W.F. N. 47° W. 41.1'
27 "	3/4" PIPE COPPER TAB	8" D.F. N. 78° E. 7.1'
28 "	3/4" PIPE COPPER TAB	10" D.F. N. 49° W. 24.9'
29 "	3/4" PIPE COPPER TAB	24" B.O. S. 54° W. 47.6'
29A FOUND	U.S.G.L.O.S. BRASS CAP 1939	
29B "	"	
29C "	"	
28 ESTAB.	3/4" PIPE COPPER TAB	6" W.F. N. 85° E. 9.9' 8" W.F. S. 75° W. 5.9' 20" D.F. N. 13° E. 9.8'
29 "	3/4" PIPE COPPER TAB ORIGINAL	8" D.F. S. 24° E. 27.9' 20" B.O. S. 62° W. 13.0' 20" B.O. SNAG N. 40° E. 4.5'
30 "	NO MONUMENT	8" D.F. S. 65° W. 14.8' 18" C. S. 5° E. 29.6' 10" C. N. 44° W
31 "	3/4" PIPE COPPER TAB	14" D.F. N. 5° E. 18.5' 10" B.O. N. 21° W. 23.2'
32 "	3/4" PIPE COPPER TAB	12" C. S. 75° W. 17.0' 48" D.F. N. 10° E. 4.8'
33 "	3/4" PIPE COPPER TAB	30" D.F. S. 24 1/2° W. 55.9'
34 "	3/4" STEEL ORIGINAL	52" D.F. N. 62° W. 34.3' 70" S.P. N. 45° E. 58.7' 24" B.O. S. 42° E. 30.4'
35 "	3/4" PIPE COPPER TAB	6" D.F. S. 88° E. 2.2' 6" B.O. N. 88° W. 10.0'
36 "	3/4" PIPE COPPER TAB	32" D.F. N. 4° E. 36.5' 24" W.F. S. 35° E. 24.0'
36A FOUND	U.S.G.L.O.S. BRASS CAP 1939	
37 "	U.S.G.L.O.S. BRASS CAP 1939	30" W.F. SNAG N. 86° W. 13.5' 26" W.F. NORTH 29.5'
38 ESTAB.	3/4" PIPE COPPER TAB	22" D.F. N. 54° W. 29.8' 20" D.F. SOUTH 13.0'
39 "	NO MONUMENT	
40 "	3/4" PIPE COPPER TAB	10" D.F. S. 74° W. 10.4' 8" D.F. N. 63° E. 8.2'
41 "	NO MONUMENT	
42 "	MID POINT NOT ESTABLISHED ROUGH TERRAIN	
43 "	NO MONUMENT	
44 "	3/4" PIPE	6" W.F. N. 83° W. 13.5' 14" B.O. N. 33° E. 16.8' 30" C. N. 50° W. 13.5' 32" C. S. 35° W. 8.0'
45 "	FALLS IN CREEK	
46 "	3/4" PIPE COPPER TAB	4" I.C. N. 30° W. 34.8' 8" W.F. N. 62° E. 26.4'
47 "	3/4" PIPE COPPER TAB	12" I.C. N. 54° E. 4.5' 16" I.C. S. 84° E. 4.4'
48 "	3/4" PIPE COPPER TAB	6" I.C. N. 20° W. 29.8' 60" D.F. STUMP SOUTH 2.0'
48A FOUND	U.S.G.L.O.S. BRASS CAP 1939	
49 "	U.S.G.L.O.S. BRASS CAP 1939	14" P.P. S. 62° W. 51.5' 26" S.P. N. 66° W. 27.0'
50 "	NO MONUMENT	
51 ESTAB.	3/4" PIPE COPPER TAB	4" W.F. N. 80° W. 17.7' 4" W.F. S. 50° W. 19.9' 8" D.F. S. 62° W. 17.3' 14" S.P. N. 4° W. 24.1' 8" D.F. N. 55° E. 16.7'
52 "	3/4" PIPE COPPER TAB ORIGINAL	28" D.F. S. 24° E. 37.0'
53 "	3/4" PIPE COPPER TAB	14" B.O. N. 30° W. 24.0' 18" S.P. S. 46° E. 26.7'
54 "	3/4" PIPE COPPER TAB	46" D.F. S. 42° W. 9.3' 5" W.F. N. 21° 40' E. 28.4'



RECORD OF SURVEY  
FOR SOPER-WHEELER COMPANY  
SECTIONS 11, 12, 13, 14, T. 20 N., R. 8 E., M.D.B. & M.  
PLUMAS COUNTY, CALIFORNIA  
SCALE: 1"=1000'

NOTE: ALL CORNERS IN THE FIELD ARE DESIGNATED BY LOCATION POSTERS