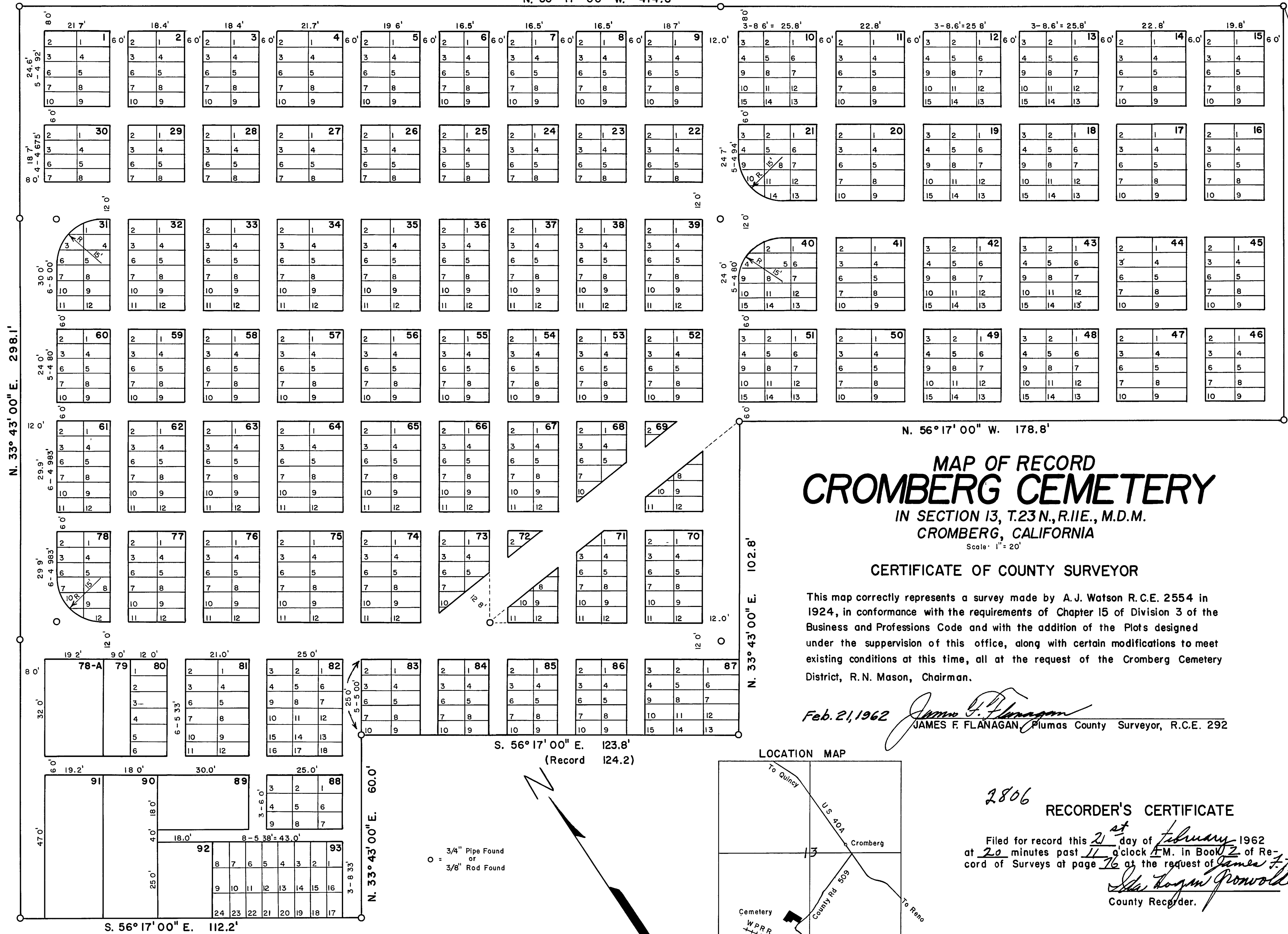


Basis of Bearing
N. 56° 17' 00" W. 414.8'



N. 15° 35' W. 173.7'
Book 5 Page 26 of Records.
N. 33° 43' 00\"/>

MAP OF RECORD CROMBERG CEMETERY

IN SECTION 13, T.23 N., R.11 E., M.D.M.
CROMBERG, CALIFORNIA

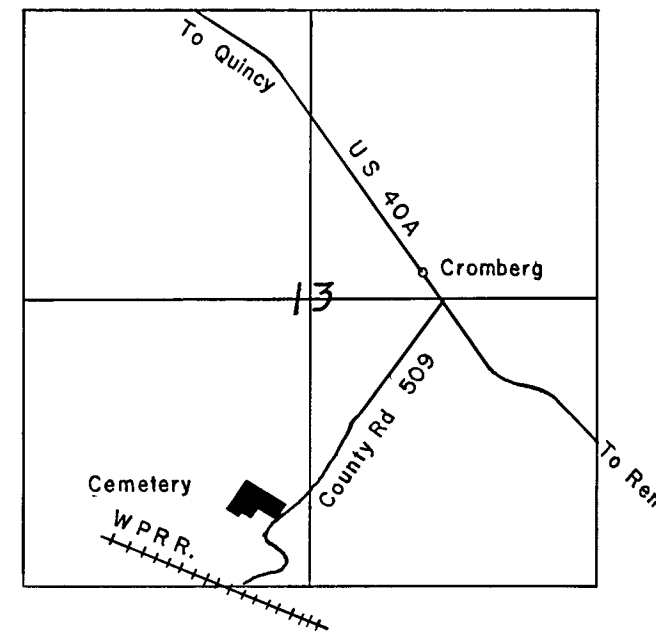
Scale: 1" = 20'

CERTIFICATE OF COUNTY SURVEYOR

This map correctly represents a survey made by A.J. Watson R.C.E. 2554 in 1924, in conformance with the requirements of Chapter 15 of Division 3 of the Business and Professions Code and with the addition of the Plots designed under the supervision of this office, along with certain modifications to meet existing conditions at this time, all at the request of the Cromberg Cemetery District, R. N. Mason, Chairman.

Feb. 21, 1962 *James F. Flanagan*
JAMES F. FLANAGAN, Plumas County Surveyor, R.C.E. 292

LOCATION MAP



RECORDER'S CERTIFICATE

2806
Filed for record this 21st day of February 1962
at 20 minutes past 11 o'clock A.M. in Book 2 of Re-
cord of Surveys at page 76 at the request of *James F. Flanagan*
Shirley Logan Powell
County Recorder.

○ = 3/4" Pipe Found
○ = 3/8" Rod Found