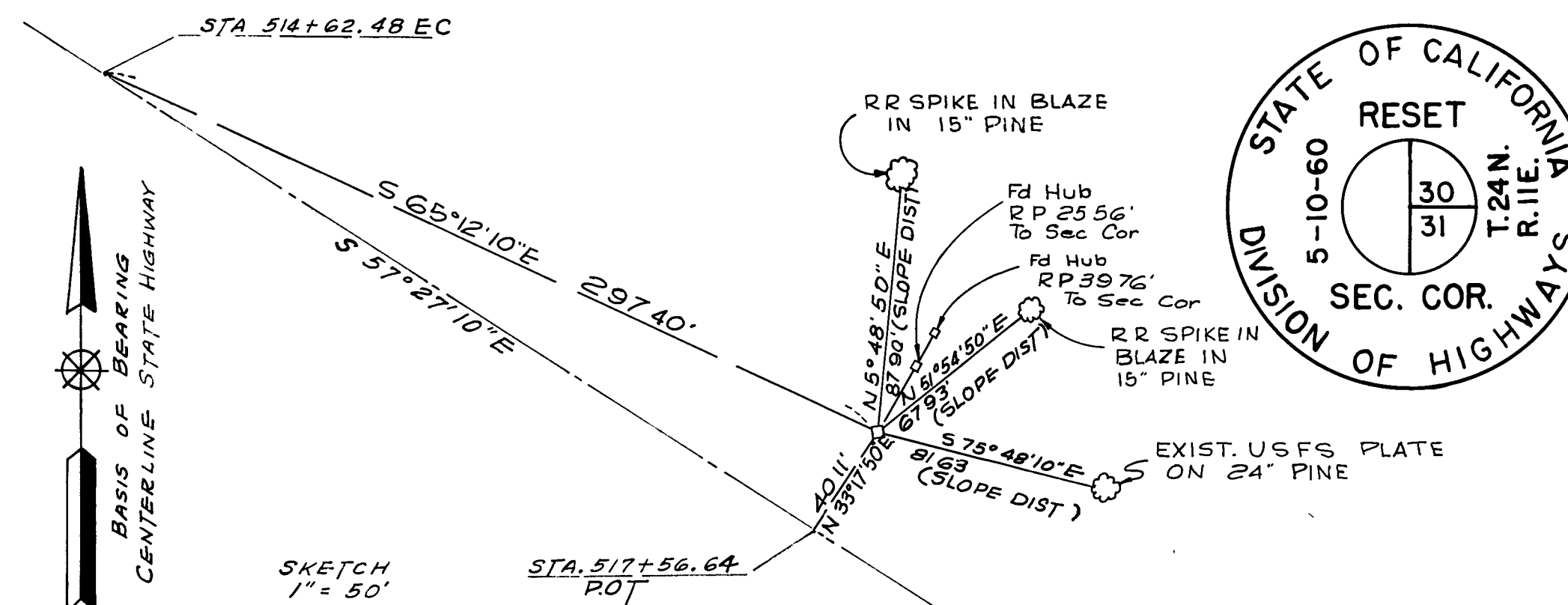
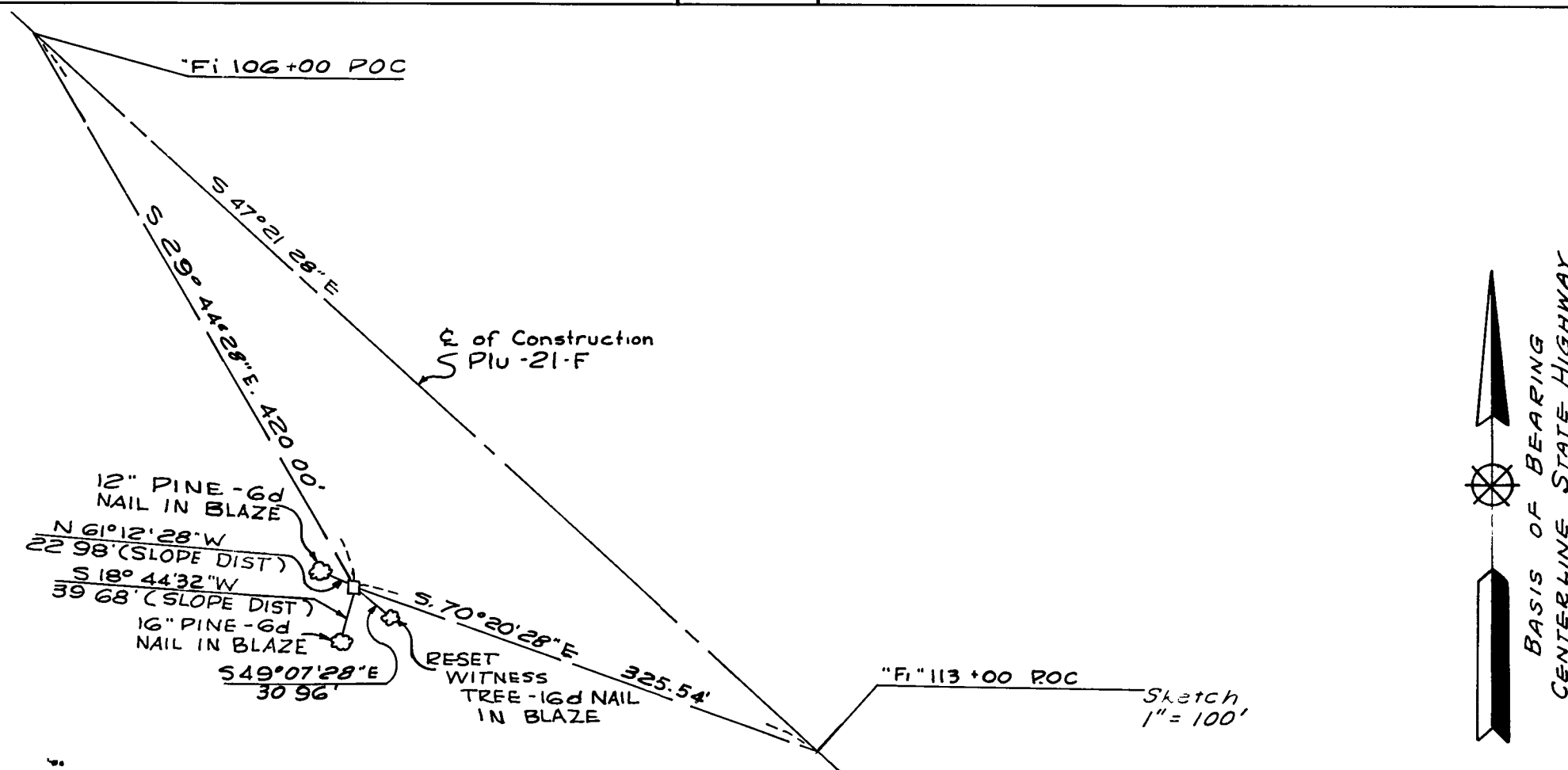


SURVEY TO PERPETUATE SECTION CORNERS BY THE DIVISION OF HIGHWAYS

IN PLUMAS COUNTY T.22 N., R.12 E., M.D.M.
SEC. CORNER COMMON TO SECTIONS 10, 11, 14 & 15

IN PLUMAS COUNTY T.24 N., R.11 E., M.D.M.
SOUTHWEST CORNER SECTION 30

G.L.O. NOTES		AS PERPETUATED		G.L.O. NOTES		AS PERPETUATED	
DATE	AUGUST 23, 1872	DATE	MAY 12, 1960; NOVEMBER 16, 1960	DATE	SEPTEMBER 20, 1880	DATE	MAY 10, 1960 & NOV. 15, 1960
MON.	3"X 3" POST 4 NOTCHES ON S., 2 ON E. COR.	MON.	STAKE WITH TACK IN ROCK CAIRN	MON.	SET POST FOR CORNER	MON.	BRASS PLATE SET IN CONCRETE MON.
REF.	A PITCH PINE 30" DIAMETER BEARS NORTH 3 1/2° EAST 79 LINKS DIST.	REF.	WITNESS TREE — SET 6d NAIL IN BLAZED 12" PINE N61°12'28"W 22.98' (SLOPE DIST.)	REF.		REF.	WITNESS TREE — R.R. SPIKE IN BLAZE OF 15" PINE N5°48'50"E 87.90' (SLOPE DIST.)
	A PITCH PINE 32" DIAMETER BEARS NORTH 30° 45' WEST 19 LINKS DIST.		WITNESS TREE — SET 6d NAIL IN BLAZED 16" PINE S18°44'32"W 39.68' (SLOPE DIST.)				WITNESS TREE — R.R. SPIKE IN BLAZE OF 15" PINE N51°54'50"E 67.93' (SLOPE DIST.)
	A PITCH PINE 30" DIA. BEARS S 53° 30' W 78 LINKS DIST.		CORNER IS N 70° 20' 28" W 325.54' FROM HWY. & STA. 113 + 00 & S 29° 44' 28" E 420.00' FROM HWY. & STA. 106 + 00				WITNESS TREE — EXIST. U.S.F.S. PLATE ON 24" PINE S 75° 48' 10" E 81.63' (SLOPE DIST.)
	A PITCH PINE 42" DIA. BEARS S 25° 45' E 182 LINKS DIST.		REMARKED WITNESS TREE WITH 16d NAIL IN BLAZE S 49° 07' 28" E, 30.96'	1960	FOUND: U.S.B.P.R. REFERENCE HUBS AS SHOWN		



THIS MAP CORRECTLY REPRESENTS A SURVEY MADE BY ME OR UNDER MY DIRECTION IN CONFORMANCE WITH THE REQUIREMENTS OF CHAPTER 15 OF DIVISION 3 OF THE BUSINESS AND PROFESSIONS CODE AT THE REQUEST OF CALIFORNIA DIVISION OF HIGHWAYS IN APRIL 1961.
H.S. MILES, R.E. 5569

THIS MAP HAS BEEN EXAMINED FOR CONFORMANCE WITH THE REQUIREMENTS OF CHAPTER 15 OF DIVISION 3 OF THE BUSINESS AND PROFESSIONS CODE THIS 26th DAY OF October, 1961.
James F. Thompson
COUNTY SURVEYOR.

1839
FILED FOR RECORD THIS 26th DAY OF Oct, 1961
AT 3:30 P.M. IN BOOK 270,
OF R.F.S. AT PAGE 270, AT
THE REQUEST OF State
Division of Highways
Ed. Oregon Powell
COUNTY RECORDER