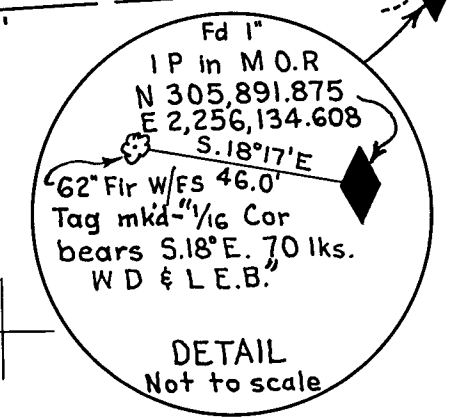
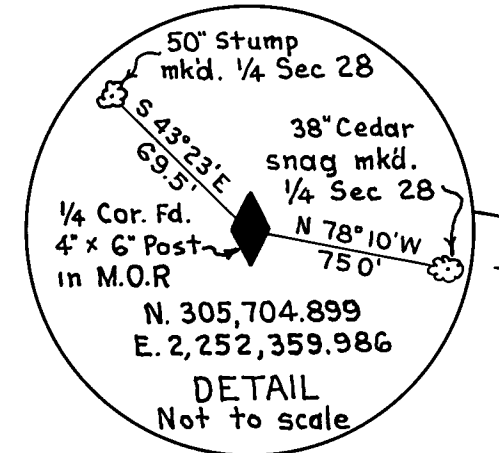
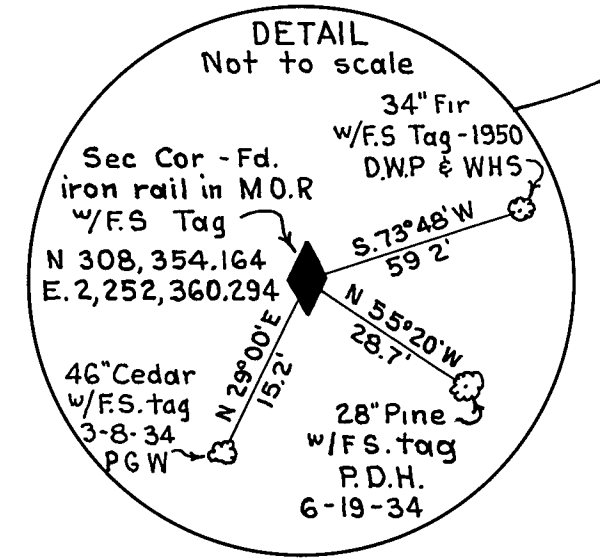
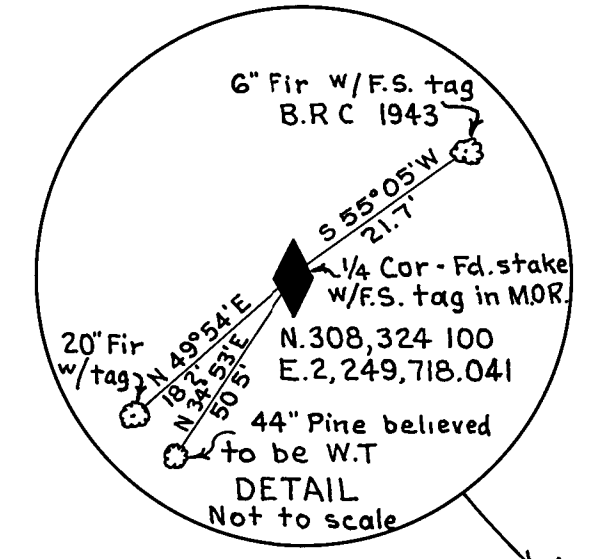
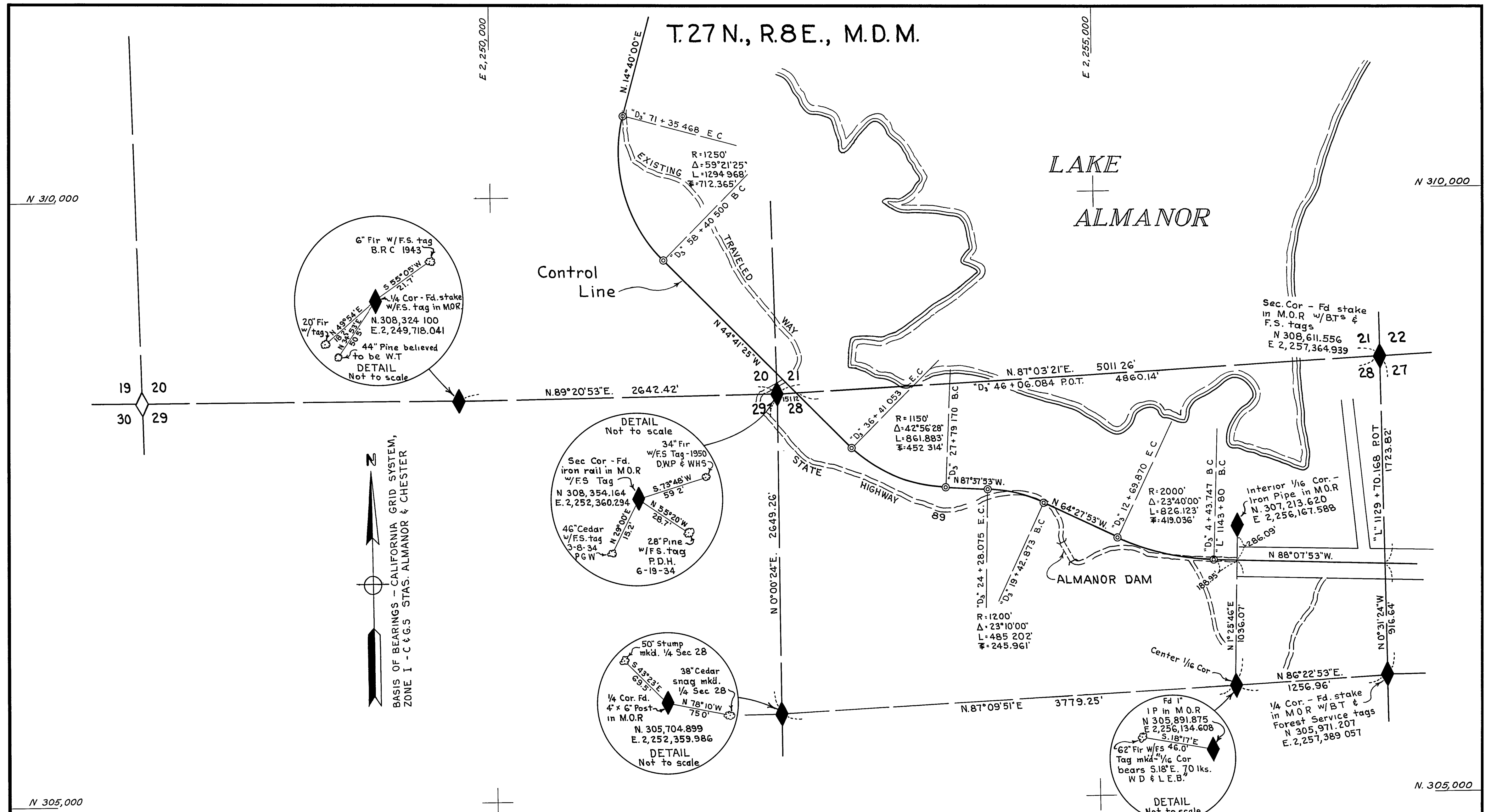


T.27 N., R.8 E., M.D.M.

LAKE ALMANOR



BASIS OF BEARINGS - CALIFORNIA GRID SYSTEM,
ZONE 1 - C & G. S. STAS. ALMANOR & CHESTER

THIS MAP CORRECTLY REPRESENTS A SURVEY MADE BY ME OR UNDER MY DIRECTION IN CONFORMANCE WITH THE REQUIREMENTS OF CHAPTER 15 OF DIVISION 3 OF THE BUSINESS AND PROFESSIONS CODE AT THE REQUEST OF CALIFORNIA DIVISION OF HIGHWAYS IN AUGUST 1961

H.S. Miles
H. S. MILES, R.C.E. 5569

THIS MAP HAS BEEN EXAMINED FOR CONFORMANCE WITH THE REQUIREMENTS OF CHAPTER 15 OF DIVISION 3 OF THE BUSINESS AND PROFESSIONS CODE, THIS 9th DAY OF October, 1961.

James F. Honagan
County Surveyor
Plumas County

DISTANCES AND BEARINGS SHOWN HEREON ARE BASED ON THE CALIFORNIA COORDINATE SYSTEM, ZONE 1. DISTANCES SHOWN ARE GRID DISTANCES. DIVIDE DISTANCES SHOWN BY .99973661 TO OBTAIN GROUND LEVEL DISTANCES.

1624
FILED FOR RECORD THIS 9th DAY OF October 1961 AT 2:05 P.M. IN BOOK 2 OF RECORDS OF SURVEY AT PAGE 69, AT THE REQUEST OF DIVISION OF HIGHWAYS
Ma Hogan Gronwald
COUNTY RECORDER

THIS SURVEY SUPERSEDES THAT SURVEY FILED IN BOOK 2 OF RECORD OF SURVEYS, AT PAGE 41, PLUMAS COUNTY RECORDS.

- LEGEND
- ◆ FOUND SECTION CORNERS
 - ◇ CORNERS NOT FOUND
 - ⊙ TEMPORARY MON WITH RE. TAG TO BE REPLACED BY CONCRETE MONUMENT WITH BRASS CAP DURING HIGHWAY CONSTRUCTION

AMENDED SURVEY OF A CONTROL LINE FOR STATE HIGHWAY PURPOSES
IN T.27 N., R.8 E., M.D.M., SEC. 20 & 28 PLUMAS COUNTY, CALIFORNIA
AUGUST 1961 SCALE 1" = 500'