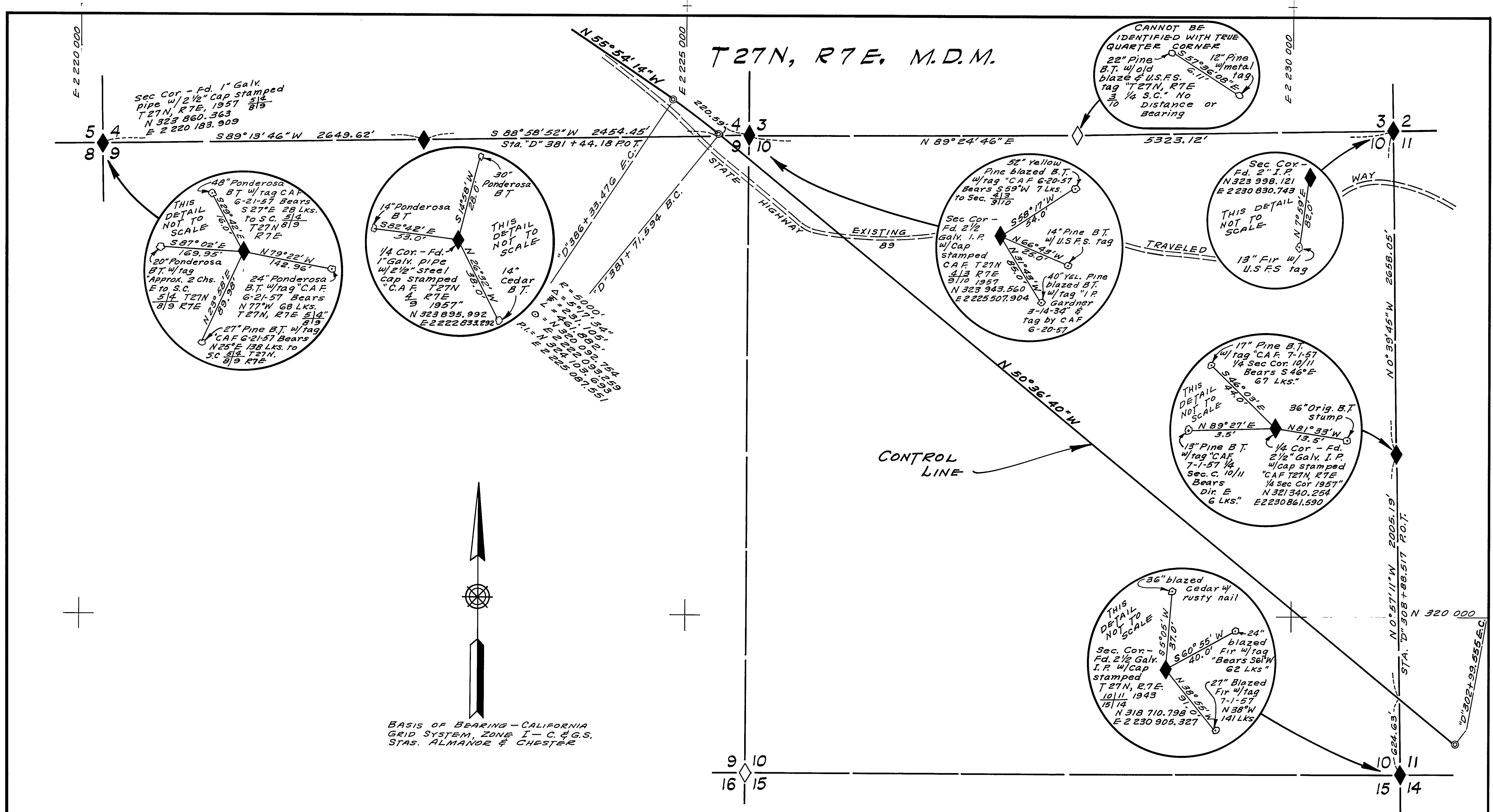


T27N, R7E, M.D.M.



BASIS OF BEARING - CALIFORNIA GRID SYSTEM, ZONE I - C. & G.S. STAS. ALMADOR & CHESTER

THIS MAP CORRECTLY REPRESENTS A SURVEY MADE BY ME OR UNDER MY DIRECTION IN CONFORMANCE WITH THE REQUIREMENTS OF CHAPTER 15 OF DIVISION 3 OF THE BUSINESS AND PROFESSIONS CODE AT THE REQUEST OF CALIFORNIA DIVISION OF HIGHWAYS, IN NOVEMBER 1960.
H. S. MILES, R.E. 5569

DISTANCES AND BEARINGS SHOWN HEREON ARE BASED ON THE CALIFORNIA COORDINATE SYSTEM, ZONE I. DISTANCES SHOWN ARE GRID DISTANCES. DIVIDE DISTANCES SHOWN BY .99973251 TO OBTAIN GROUND LEVEL DISTANCES.

THIS MAP HAS BEEN EXAMINED FOR CONFORMANCE WITH THE REQUIREMENTS OF CHAPTER 15 OF DIVISION 3 OF THE BUSINESS AND PROFESSIONS CODE THIS 12th DAY OF January 1961.
James H. [Signature] COUNTY SURVEYOR

2360
FILED FOR RECORD THIS 13th DAY OF January 1961 AT 9:13 A.M. IN BOOK 2 OF R.O.S. AT PAGE 41, AT THE REQUEST OF James H. [Signature] Co Surveyor
M. [Signature] COUNTY RECORDER

LEGEND

- ◆ FOUND SECTION CORNERS
- ◇ CORNERS NOT FOUND
- ⊙ HUB & TACK WITH R.E. TAG TO BE REPLACED BY CONCRETE MONUMENT WITH BRASS CAP DURING HIGHWAY CONSTRUCTION

SURVEY OF A CONTROL LINE FOR STATE HIGHWAY PURPOSES IN T27N, R7E, M.D.M., SEC. 9 & 10 PLUMAS COUNTY, CALIFORNIA
NOVEMBER 1960 SCALE 1" = 500'