

LEGEND

Scale 1" inch = 800 Feet

- ⊙ Shows Corners Found
- ⊙ Shows Line Trees Found
- Shows Corner set and Tagged L.S. 2322

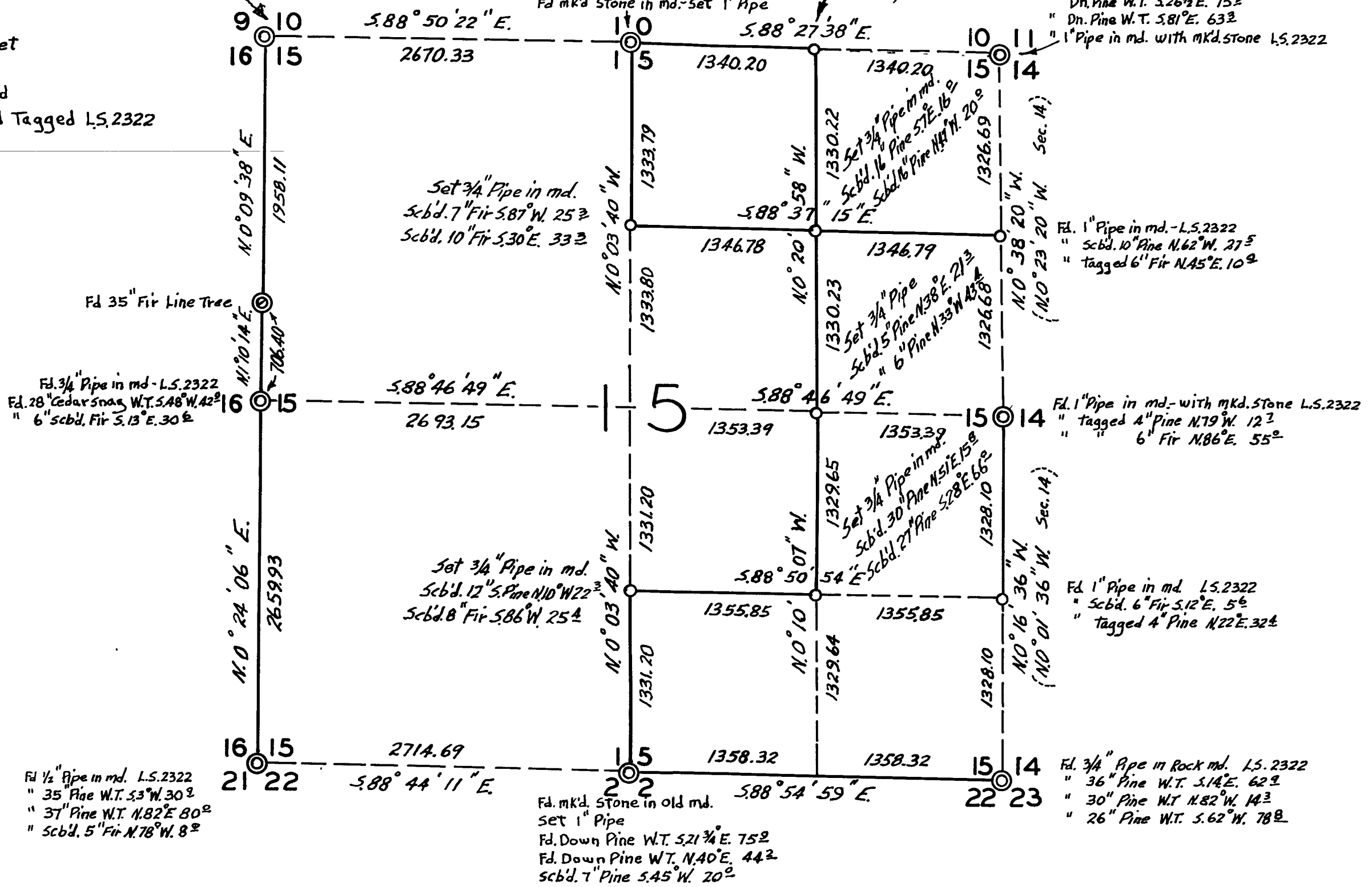
Bearings are from Solar Observation

Fd. scbd. 10" Pine S87°W. 36²
 " 10" Pine N35°E. 10⁴
 " 23" Fir W.T. S36°E. 86²
 " 24" Fir W.T. N27°W. 25²
 Fd. 1" Pipe in md. L.S. 2322

scbd. 12" Pine S3°W. 19²
 Fd. 50" Pine W.T. N12°W. 114²
 Fd. mkd Stone in md. Set 1" Pipe

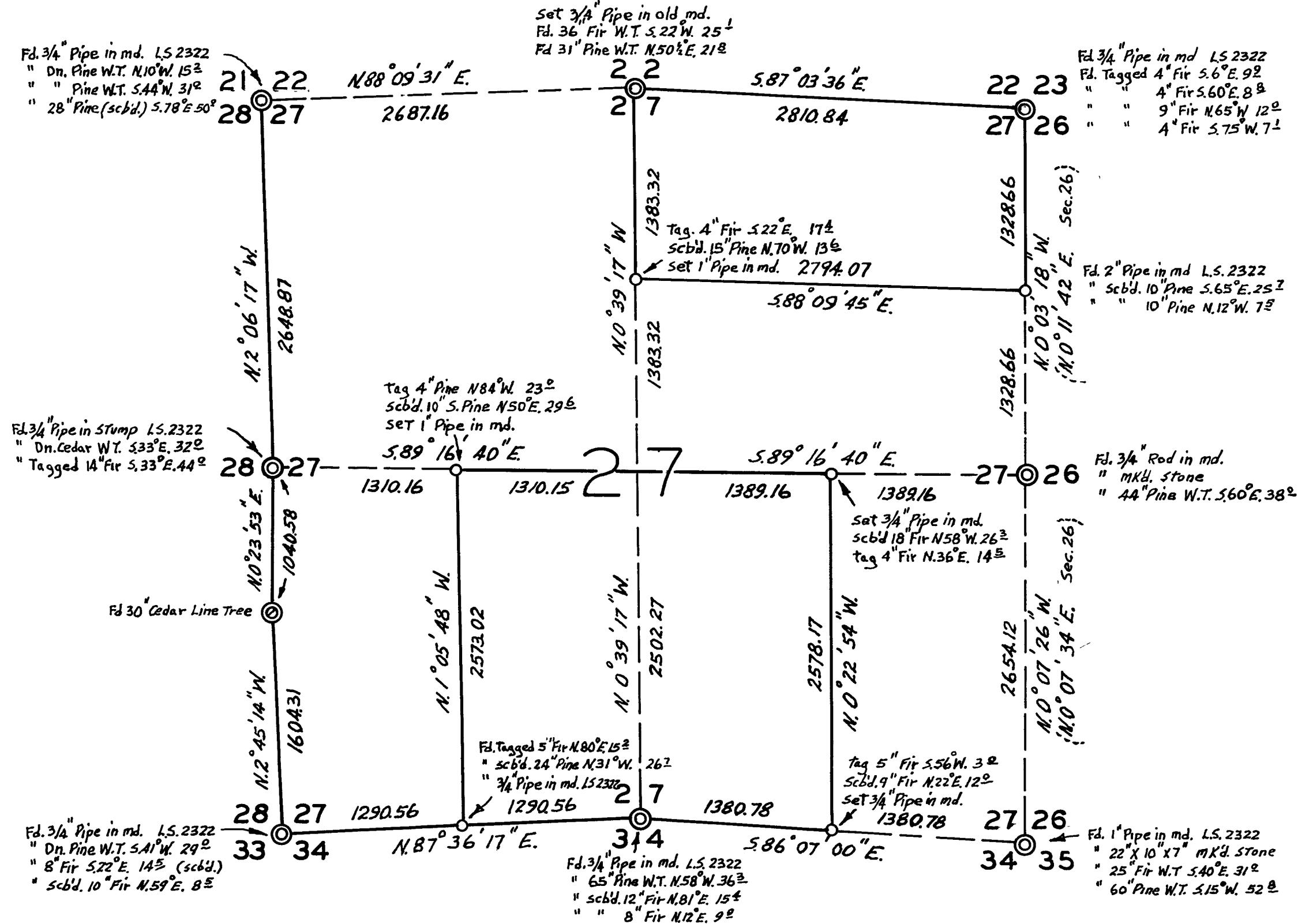
Falls in Brush
 Tag 4" Fir N56°E. 38²
 Set 3/4" Pipe in md.

Fd. scbd. 10" Pine S35°E. 42²
 " Dn. Pine W.T. S26°E. 75²
 " Dn. Pine W.T. S81°E. 63²
 " 1" Pipe in md. with mkd. Stone L.S. 2322



T. 29N. R. 7E. M. D. B. & M.

LINES SHOWN AS SOLID LINES ARE
 BLAZED AND POSTED WITH FOREST
 SERVICE BOUNDARY POSTERS.



COUNTY SURVEYOR'S CERTIFICATE
 This map has been examined for conformity with the requirements of Chapter
 15 of Division 3 of the Business and Professions Code this 9th day of
 March, 1960.

(Signed) *James H. Sargent* R.E. 292
 County Surveyor

SURVEYOR'S CERTIFICATE

This map correctly represents a survey made by me or under my direction in
 conformance with the requirements of Chapter 15 of Division 3 of the Business
 and Professions Code at the request of *Wm. Deary*
 Name of Person Authorizing Survey

in 1959

(Signed and Sealed) *Loren J. Sargent*
 L. S. No. 2322

2224

RECORDED'S CERTIFICATE
 Filed for record this 14th day of May, 1960, at 11:21 A.M. in
 Book 145 at page 145 at the request of *Loren J. Sargent*
 (Signed) *Loren J. Sargent*
 County Recorder

**SURVEY FOR WALTER W. WALKER ET AL.
 IN
 SECTIONS 15-27 T. 29N. R. 7E. M.D.M.
 PLUMAS COUNTY, CALIFORNIA OF
 SUBDIVISION LINES**

JAN 1960
 LOREN J. SARGENT L.S. 2322

2-RS 24

24