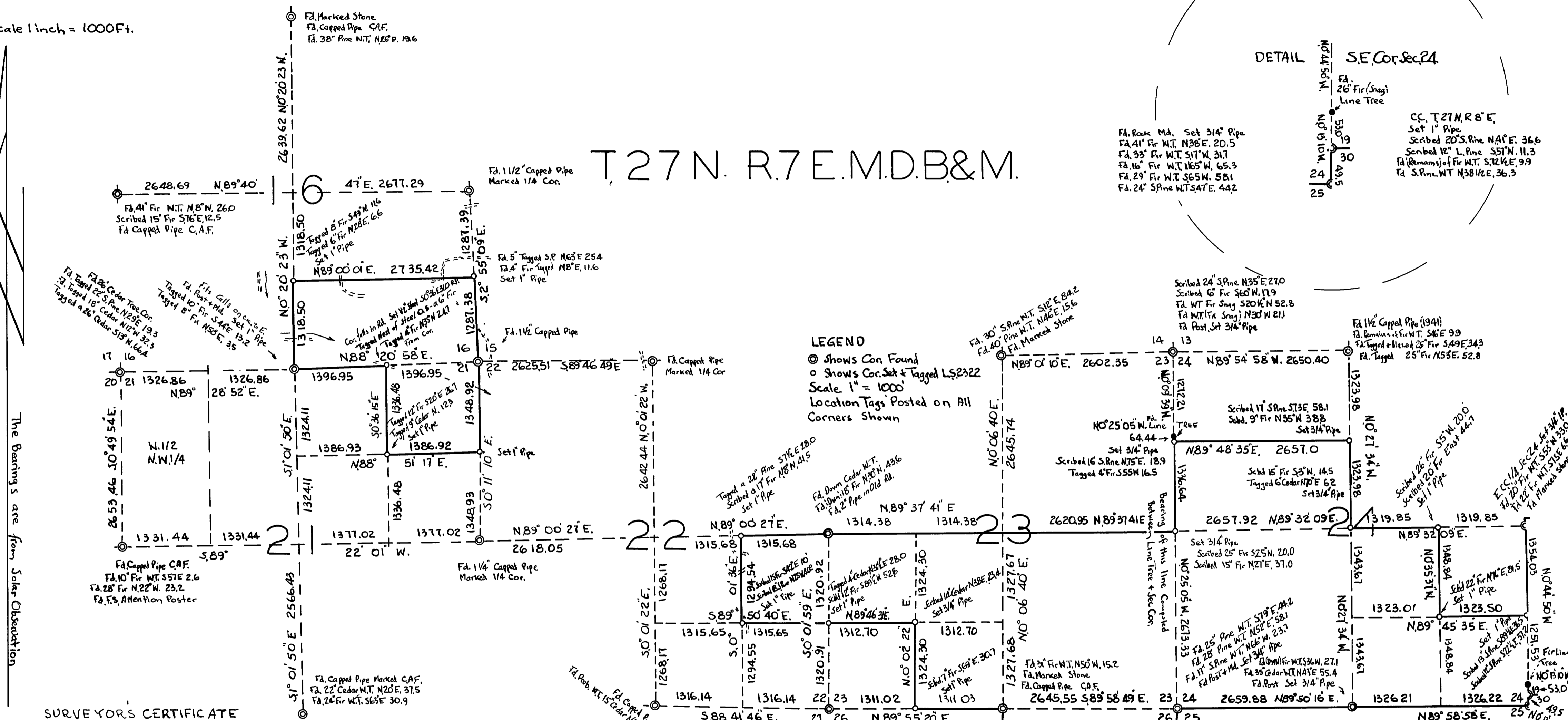
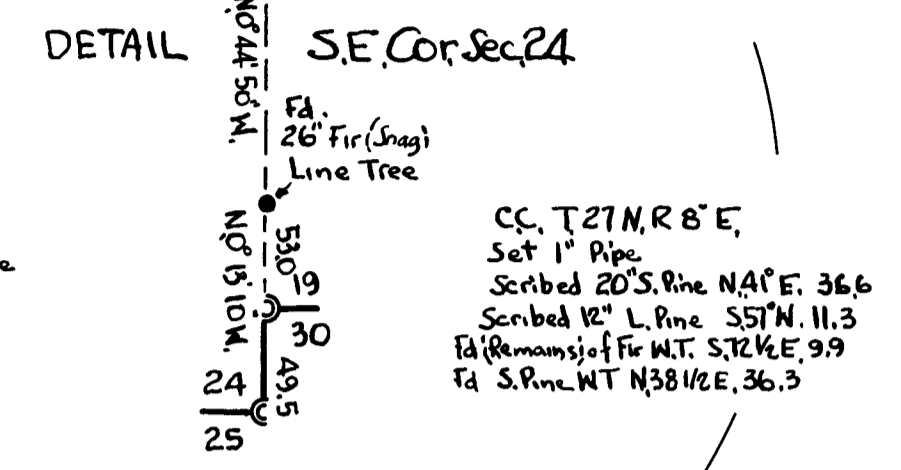


Scale 1 inch = 1000 Ft.

# T. 27 N. R. 7 E. M. D. B. & M.



### LEGEND

● Shows Cor. Found  
 ○ Shows Cor. Set & Tagged L.S. 2322  
 Scale 1" = 1000'  
 Location Tags Posted on All Corners Shown

The Bearings are from Solar Observation

### SURVEYOR'S CERTIFICATE

This Map correctly represents a Survey made by Me or under my direction in conformance with the requirements of Chapter 15 of Division 3 of the Business and Professions Code

*Loren J. Sargent*  
 LOREN J. SARGENT L.S. 2322

### COUNTY SURVEYOR'S CERTIFICATE

This Map has been examined for conformance with the requirements of Chapter 15 of Division 3 of the Business + Professions Code this 9<sup>th</sup> Day of March 1960

*James J. Hanagan* R.E. 292  
 PLUMAS COUNTY SURVEYOR

### RECORDERS CERTIFICATE

Filed for Record this 9<sup>th</sup> Day of March 1960 in Book 2 of Records of Survey

At Page 23 at the request of *Loren J. Sargent*  
*Ma Logan Growold*  
 PLUMAS COUNTY RECORDER

SURVEY OF SUBDIVISION LINES FOR  
 WALTER W. WALKER ETAL.  
 IN SEC. 16 21, 22, 23, 24 & 26 T. 27 N. R. 7 E.  
 M. D. B. & M. PLUMAS COUNTY, CALIF.  
 LOREN J. SARGENT L.S. 2322