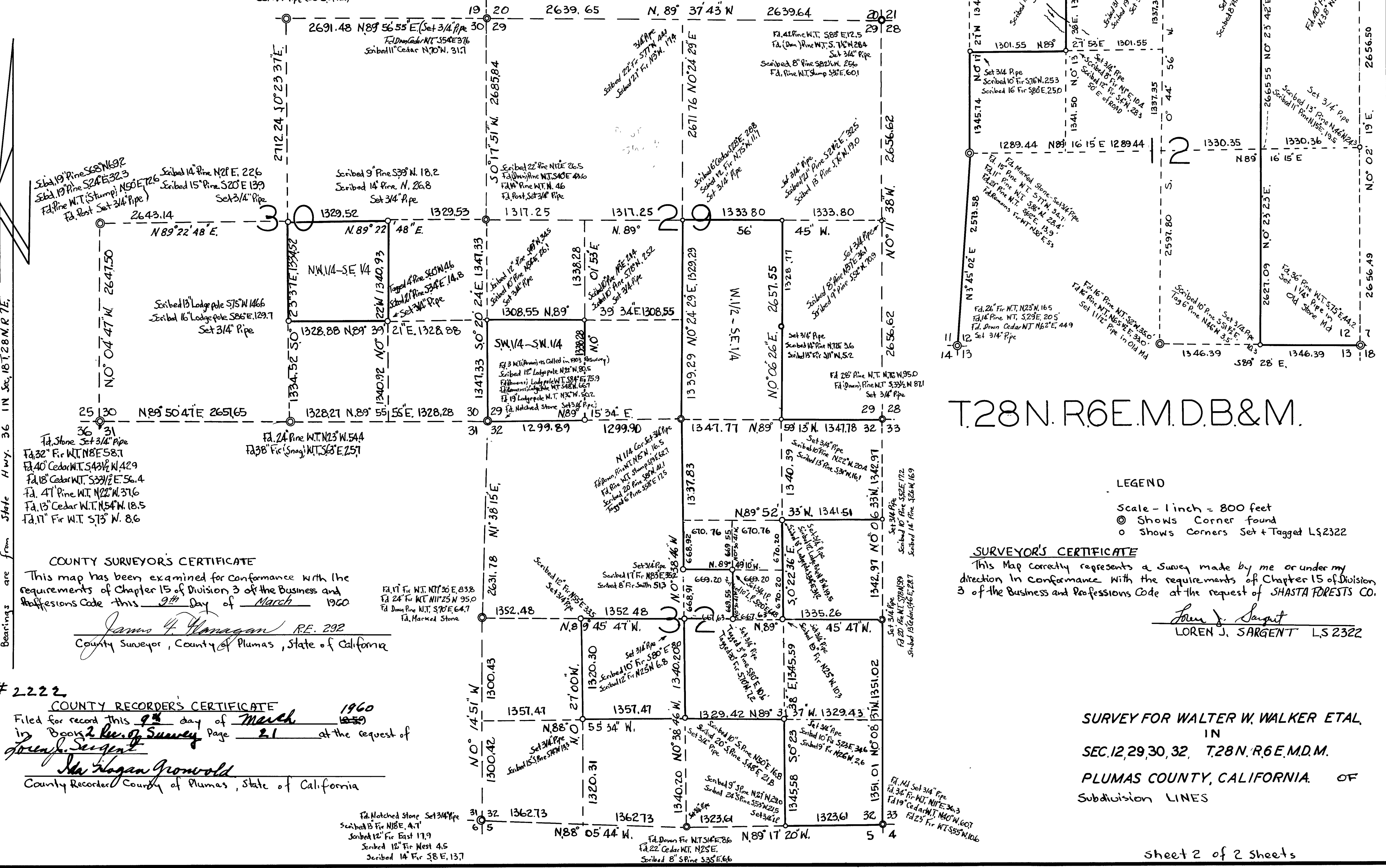


Bearings are from State Hwy. 36 IN Sec. 18, T.28 N. R. 6 E.

Fd. Marked Stone, Set 3/4" Pipe
Fd. 32" Pine W.T. N. 19° E. 54.8
Fd. 37" Pine W.T. N. 64 1/2° W. 76.2
Fd. 36" Pine W.T. S. 44 1/2° E. 64.7
Fd. 35" Pine W.T. S. 69° N. 82.5

Scd. 8" Pine N. 28° E. 10.6
Fd. 28" Pine W.T. N. 16° E. 29.7
Set 3/4" Pipe (S.O.E. of Rd.)



T.28 N. R. 6 E. M. D. B. & M.

LEGEND

Scale - 1 inch = 800 feet
⊙ Shows Corner found
○ Shows Corners Set + Tagged L.S. 2322

SURVEYOR'S CERTIFICATE

This Map correctly represents a Survey made by me or under my direction in conformance with the requirements of Chapter 15 of Division 3 of the Business and Professions Code at the request of SHASTA FORESTS CO.

Loren J. Sargent
LOREN J. SARGENT L.S. 2322

COUNTY SURVEYOR'S CERTIFICATE

This map has been examined for conformance with the requirements of Chapter 15 of Division 3 of the Business and Professions Code this 2nd day of March 1960

James F. Vanagan R.F. 292
County Surveyor, County of Plumas, State of California

2222

COUNTY RECORDER'S CERTIFICATE

Filed for record this 9th day of March 1960
in Book 2 Rec. of Survey Page 21 at the request of
Loren J. Sargent

John Hagan Gronwald
County Recorder, County of Plumas, State of California

SURVEY FOR WALTER W. WALKER ETAL
IN
SEC. 12, 29, 30, 32, T.28 N. R. 6 E. M. D. M.
PLUMAS COUNTY, CALIFORNIA. OF
Subdivision LINES