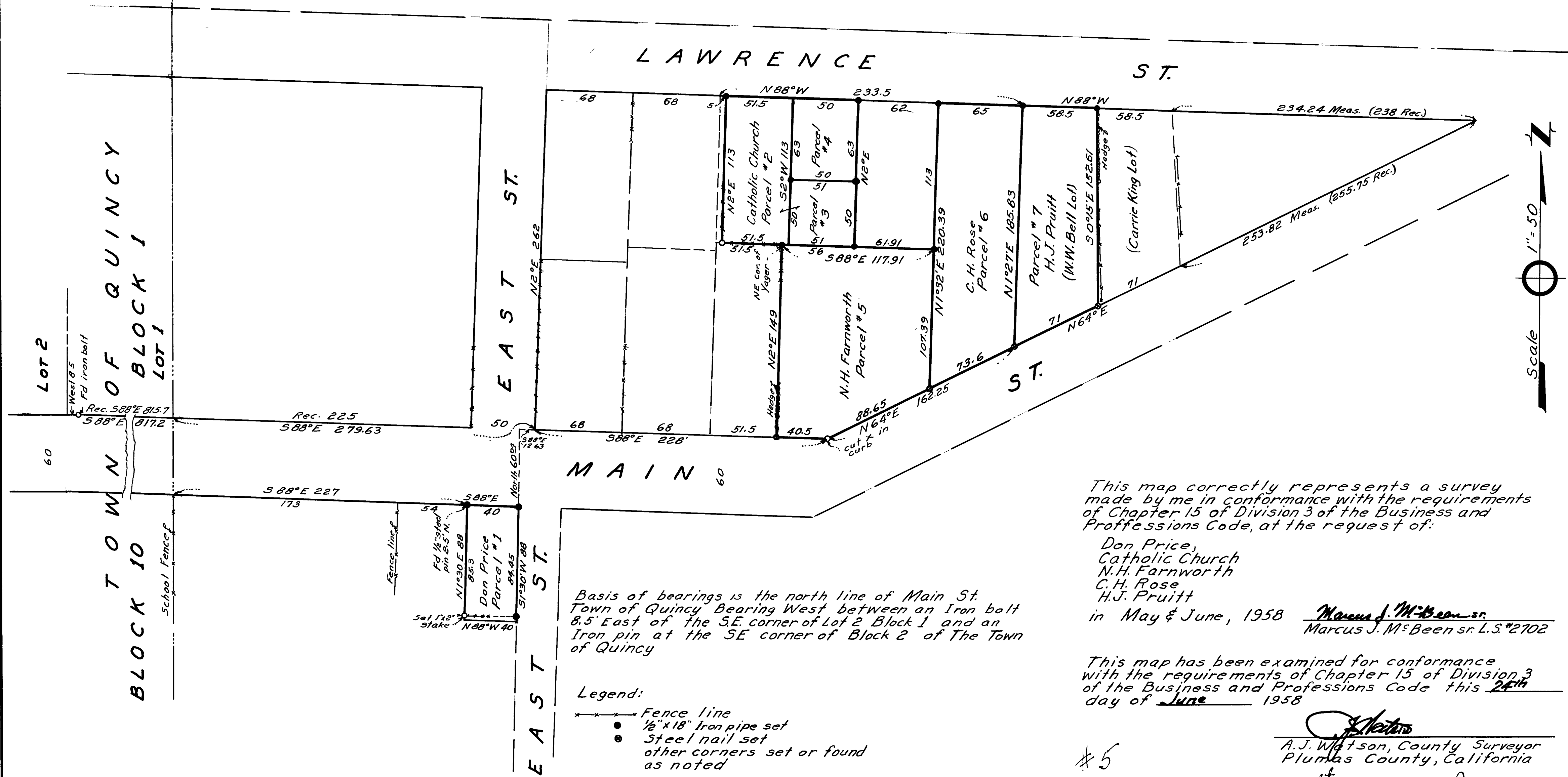


**RECORD OF SURVEY**  
 PORTION OF THE SW 1/4 OF THE SE 1/4  
 OF SEC. 14 T. 24N. R. 9E. M.D.M.



Basis of bearings is the north line of Main St.  
 Town of Quincy Bearing West between an Iron bolt  
 8.5' East of the S.E. corner of Lot 2 Block 1 and an  
 Iron pin at the S.E. corner of Block 2 of The Town  
 of Quincy

- Legend:
- Fence line
  - 1/2" x 18" Iron pipe set
  - Steel nail set
  - other corners set or found as noted

This map correctly represents a survey made by me in conformance with the requirements of Chapter 15 of Division 3 of the Business and Professions Code, at the request of:

Don Price,  
 Catholic Church  
 N.H. Farnworth  
 C.H. Rose  
 H.J. Pruitt  
 in May & June, 1958  
Marcus J. McBeen sr.  
 Marcus J. McBeen sr. L.S.#2702

This map has been examined for conformance with the requirements of Chapter 15 of Division 3 of the Business and Professions Code this 24th day of June 1958

A.J. Watson  
 A.J. Watson, County Surveyor  
 Plumas County, California

#5  
 Filed for record this 1st day of July 1958, at 10:10 A.M. in Book 2 of Rec. of Survey at page 3 at the request of Marcus J. McBeen

Dale Rogers  
 County Recorder, Plumas County