

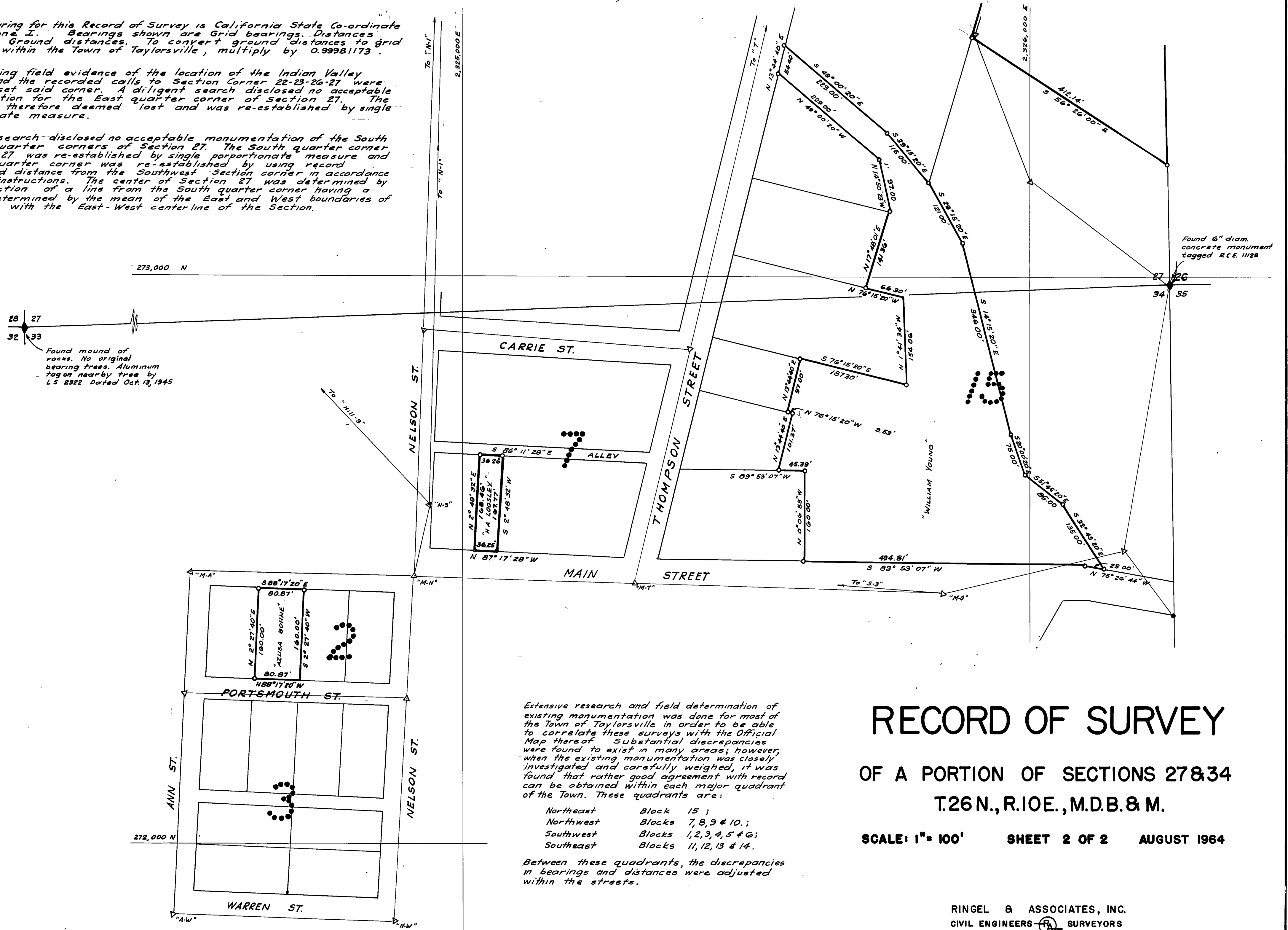
Basis of Bearing for this Record of Survey is California State Co-ordinate System, Zone I. Bearings shown are Grid bearings. Distances shown are Ground distances. To convert ground distances to grid distances within the Town of Taylorsville, multiply by 0.99981173.

The remaining field evidence of the location of the Indian Valley Railroad and the recorded calls to Section Corner 22-23-26-27 were used to reset said corner. A diligent search disclosed no acceptable monumentation for the East quarter corner of Section 27. The corner was therefore deemed lost and was re-established by single proportionate measure.

A diligent search disclosed no acceptable monumentation of the South or West quarter corners of Section 27. The South quarter corner of Section 27 was re-established by single proportionate measure and the West quarter corner was re-established by using record bearing and distance from the Southwest Section corner in accordance with G.L.O. instructions. The center of Section 27 was determined by the intersection of a line from the South quarter corner having a bearing determined by the mean of the East and West boundaries of Section 27 with the East-West centerline of the Section.

Found mound of rocks. No original bearing trees. Aluminum tag on nearby tree by L.S. 2322 Dated Oct. 13, 1945

Found 6" diam. concrete monument tagged R.C.E. 11128



Extensive research and field determination of existing monumentation was done for most of the Town of Taylorsville in order to be able to correlate these surveys with the Official Map thereof. Substantial discrepancies were found to exist in many areas; however, when the existing monumentation was closely investigated and carefully weighed, it was found that rather good agreement with record can be obtained within each major quadrant of the Town. These quadrants are:

- Northeast Blocks 15;
- Northwest Blocks 7, 8, 9 & 10.;
- Southwest Blocks 1, 2, 3, 4, 5 & 6.;
- Southeast Blocks 11, 12, 13 & 14.

Between these quadrants, the discrepancies in bearings and distances were adjusted within the streets.

RECORD OF SURVEY

OF A PORTION OF SECTIONS 27 & 34
T.26 N., R.10 E., M.D.B. & M.

SCALE: 1" = 100' SHEET 2 OF 2 AUGUST 1964

RINGEL & ASSOCIATES, INC.
CIVIL ENGINEERS & SURVEYORS
CHICO ORLAND