

111

RECORD OF SURVEY

RETRACEMENT OF PORTION OF MINERAL SURVEY 4535 STANLEY AND FRANKLIN QUARTZ LOCATION

Section 24, Township 25 North, Range 11 East, M.D.B.&M.
for

U.S. Forest Service
Scale: 1"=200'

Greenville District
December 1963

SURVEYOR'S CERTIFICATE

This map correctly represents a survey made by me or under my direction in conformance with the requirements of Chapter 15 of Division 3 of the Business and Professions Code at the request of the U.S. Forest Service.

Albert H. DeVoe
L.S. No. 3079

COUNTY SURVEYOR'S CERTIFICATE

This map has been examined for conformance with the requirements of Chapter 15 of Division 3 of the Business and Professions Code this 13th day of Jan., 1964.

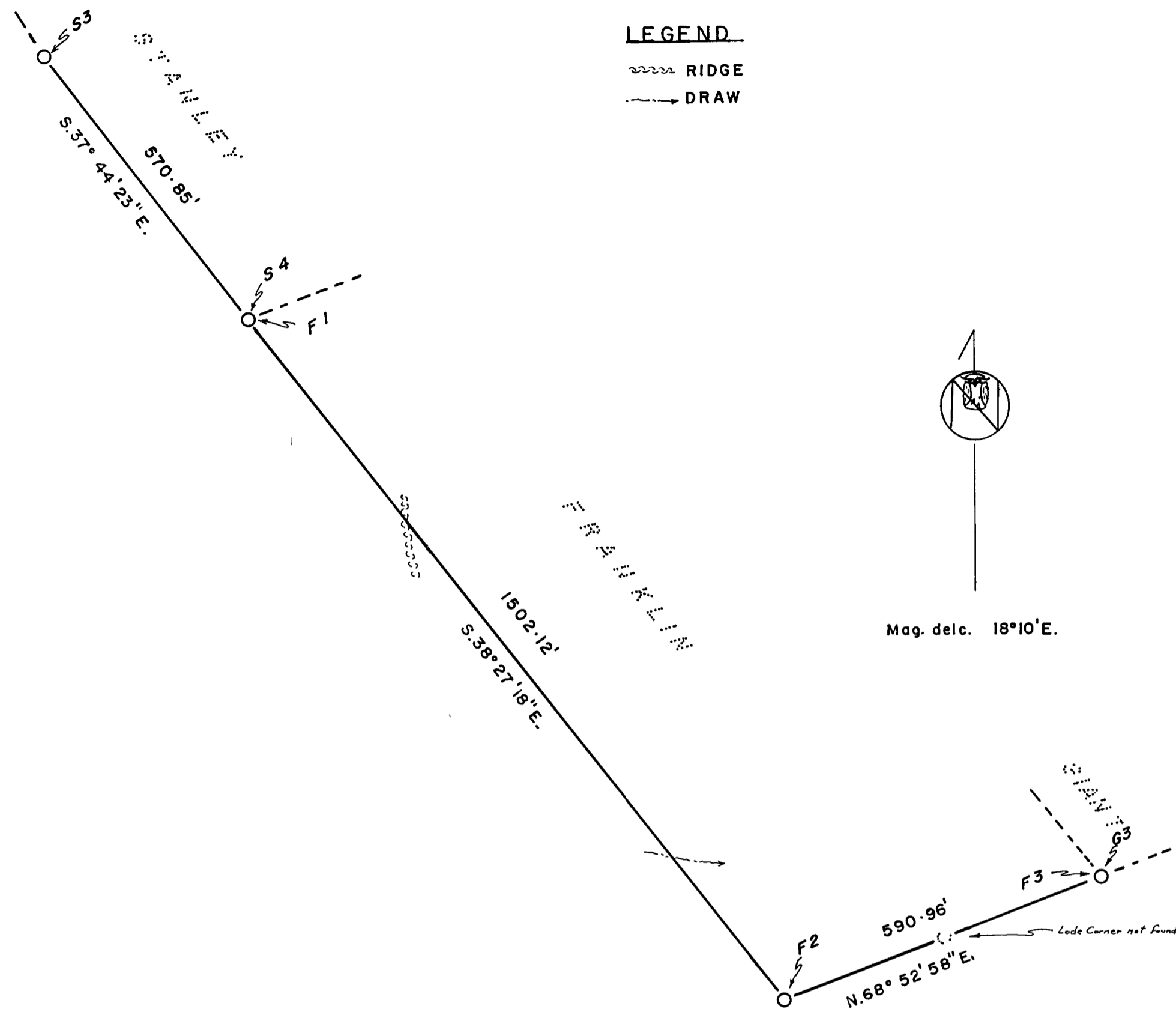
James O. Blanton
County Surveyor

3137

RECORDER'S CERTIFICATE

Filed for record this 13th day of JAN, 1964, at 11:50 AM in book 2 of "R. 75" at page 117, at the request of Albert H. DeVoe.

John Logan Gronwald
County Recorder



FIELD NOTES

This survey was made with a Kern DKMI theodolite No. 80890 with two concentric scales on the horizontal circle of 1.97 inches and vertical circle of 1.97 inches each reading to 10 seconds direct and 1 second by estimation. Instrument was in excellent condition at the time of this survey and all adjustments were in order.

The azimuth of this survey was determined by the method of deflection angles referred to the meridian from the following observations:

December 6, 1963 along the Southwest boundary of Franklin Quartz in Latitude 40° 01' N and Longitude 120° 42' I made a series of six altitude observations upon the sun for Azimuth at approximately equal time intervals - three each with the telescope direct and inverted.

Mean time of observation 120th meridian standard time = 9^h 55^m A.M.
 Declination of sun at mean time of observation = 22° 28' 11"
 Mean vertical angle to sun = 21° 42' 17"
 Mean horizontal angle from reference point to sun = 150° 50' 04"
 True bearing to reference point = N 22° 57' 47" E

The lines were measured with a K & E steel tape 300 feet in length graduated every foot for 300 feet with the foot before the zero mark subdivided to $\frac{1}{10}$ and $\frac{1}{100}$ foot. All lines and connections of this survey were run by a closed traverse. The sum of the measured angles was within the prescribed limits of a theoretical sum by a difference not to exceed 30 seconds per angle. The maximum allowable error of linear measurements between any two points was within the prescribed, one part in 2000.

STANLEY-Southwest Boundary

At Corner No. 3 of the Stanley Quartz location found original rock mound and 4"x4" post with legible scribing (3-4535). Original Bearing Tree exist and in good condition. 12" S pine S 16° 10' E 8 ft. face closed, now 19" dia. S 15° E; 12" fir S 38° 30' W 24.0 ft. face closed, now 22" W. fir S 39° 40' W. Set 1 1/2" Brass Cap in rock mound stamped 'T.25N.,R.11E.,S3,1963, L.S.3079.

Thence S 37° 44' 23" E (original bearing S 40° E).
 Corner No. 4, identical with Franklin Corner No. 1. Rock mound was destroyed by logging activity; however set 1 1/2" Brass Cap stamped 'T.25N.,R.11E.,S4,F1,1963, L.S.3079' in new rock mound from the original Bearing Trees. 30" I. cedar N 47° 30' W 11.0 ft. face open, scribing legible (4-1-4535) now 33" N 46° 20' W; 24" P pine N 35° 30' E 23.0 ft. face open, scribing legible (4-1-4535), now 24" snag N 36° 40' E. New Bearing Tree 5.6" D. fir S 60° 30' E. 80.0 ft. scribed 'FIBT'.

FRANKLIN-Southwest and Southeast Boundary

At Corner No. 1. Identical with Stanley Corner No. 4.

Thence S 38° 27' 18" E (original bearing S 40° E).
 Ridge bears S. 35° E.

Draw course S. 85° E.

Corner No. 2, found original rock mound and remains of 4"x4" post, no scribing legible - original Bearing Trees - 12" I. cedar S 81° E 7.5 ft. now 14" rotten stump S 79° 50' E. no face found. 20" pine S 14° 30' E. 11.7 ft. now 31" pine stump S 13° 20' E top of old face visible - Set 1 1/2" Brass Cap stamped 'T.25N.,R.11E., F2,1963, L.S.3079 in rock mound - New Bearing Trees - 13.8" D. fir N 30° 55' E 24.0 ft. scribed F2BT; 15.6" I cedar S 39° 43' W 32.1 ft. scribed F2 BT.

FEET
(Original
Distance)

Thence N 68° 52' 58" E (Original Bearing N 66° 35' E).
 Southeasterly lode line - not found.

590.96
(600.00)

Corner No. 3 identical with Giant Quartz Corner No. 3. Rock mound and post destroyed by logging activity. Set 1 1/2" Brass Cap stamped 'T.25N.,R.11E.,F3,G3,1963, L.S.3079' in new rock mound from original Bearing Trees. 36" fir S 60° E 19.2 ft - now remains of a stump S 58° 50' E; 42" fir S 31° 45' W 10.4 ft - now 46" fir stump S 32° 55' W opened face scribing legible (BT) - New Bearing Trees 6.6" D. fir N 72° E 38.1 ft. scribed G3; 6.2" D. fir N 86° 52' W 38.1 ft. scribed F3.