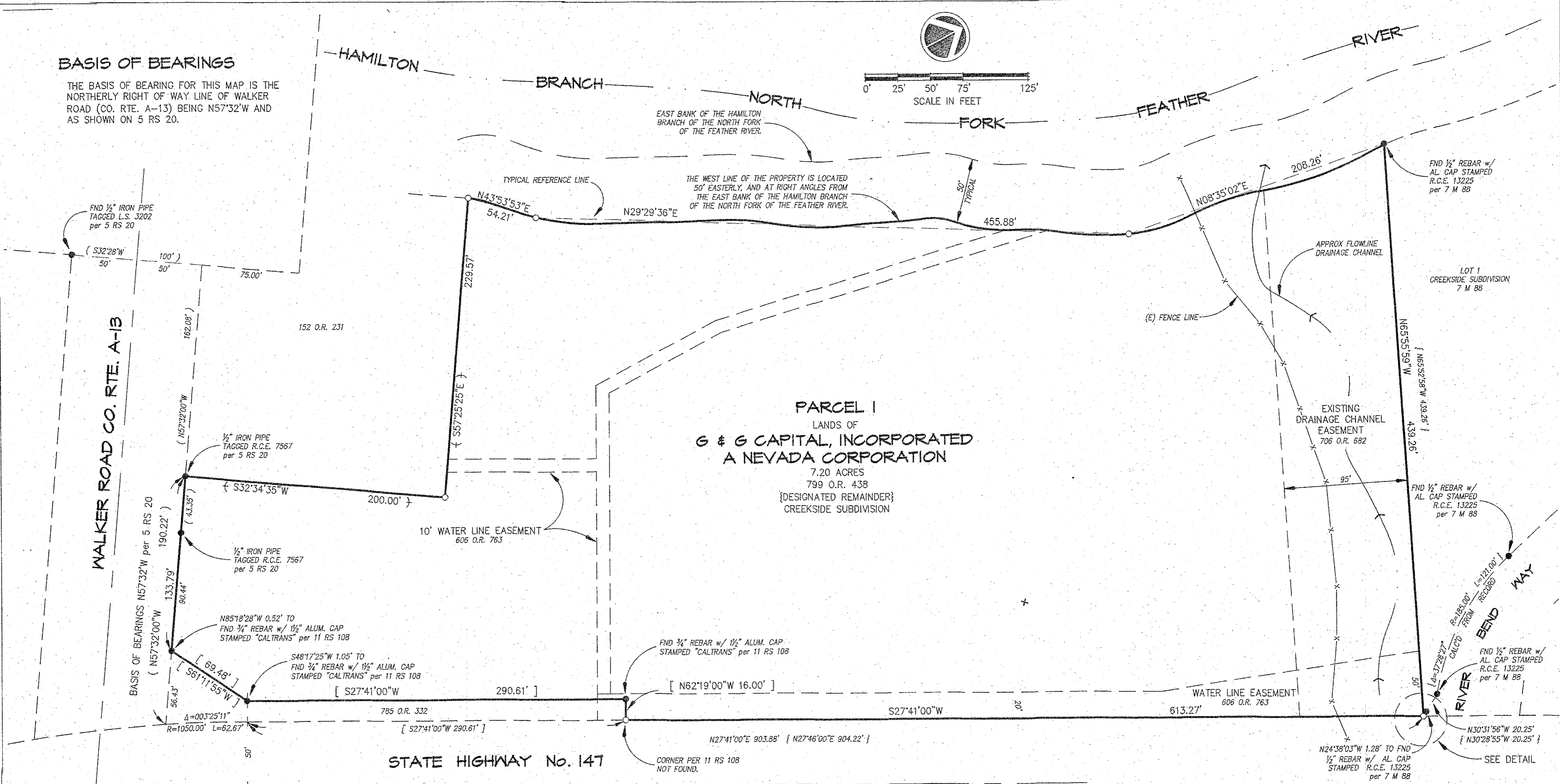
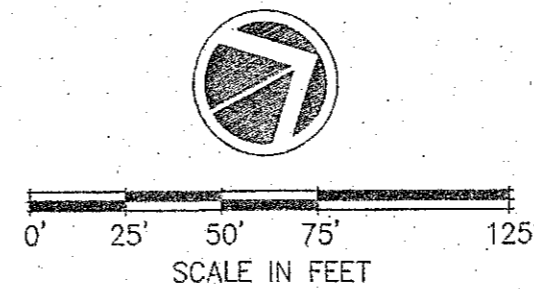


**BASIS OF BEARINGS**

THE BASIS OF BEARING FOR THIS MAP IS THE NORTHERLY RIGHT OF WAY LINE OF WALKER ROAD (CO. RTE. A-13) BEING N57°32'W AND AS SHOWN ON 5 RS 20.



**PARCEL 1**  
LANDS OF  
**G & G CAPITAL, INCORPORATED**  
A NEVADA CORPORATION  
7.20 ACRES  
799 O.R. 438  
{DESIGNATED REMAINDER}  
CREEKSIDE SUBDIVISION

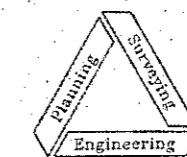
**STATE HIGHWAY No. 147**

**PARCEL MAP**

**PERANO PROPERTY**

**FOR G & G CAPITAL, INCORPORATED**

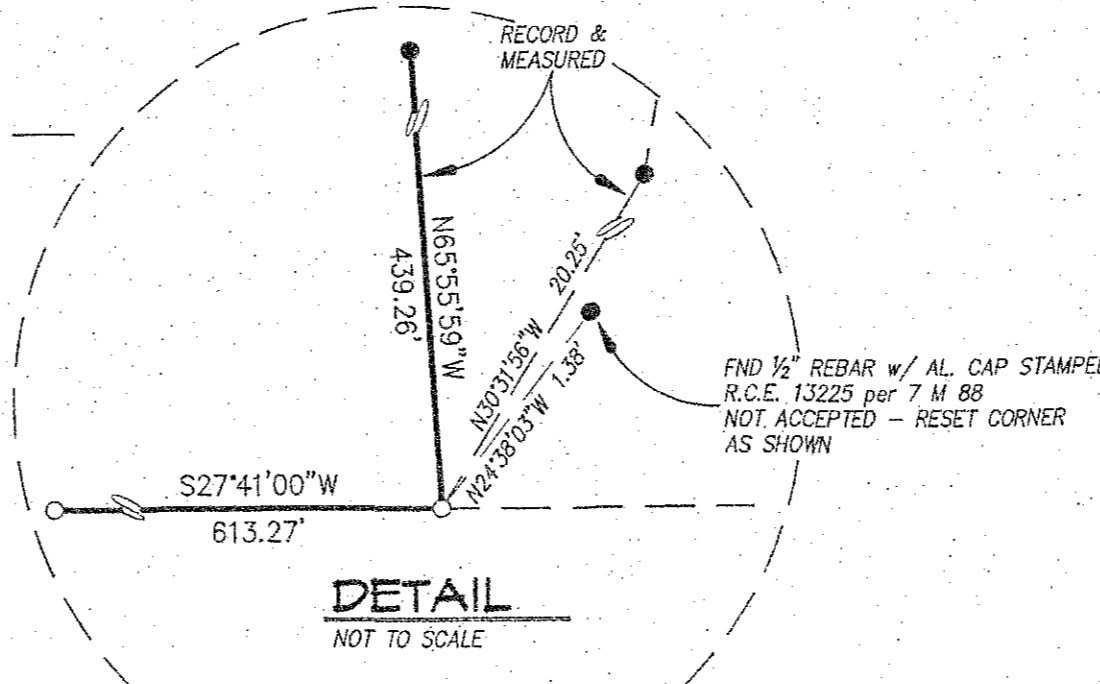
A NEVADA CORPORATION  
**IN SECTION 21, T28N, R8E MDB&M  
PLUMAS COUNTY, CALIFORNIA**



**NST Engineering, Inc.**  
1495 Riverside Drive  
Susanville, CA 96130  
(530) 257-5173

**LEGEND**

- FND MONUMENT AS NOTED
- SET 1/2" REBAR w/ CAP STAMPED "L.S. 4647"
- [ ] RECORD PER 11 RS 108
- { } RECORD PER 7 M 88
- ( ) RECORD PER 5 RS 20
- ← → RECORD PER 152 O.R. 231



13 PM 10