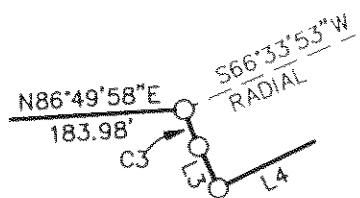
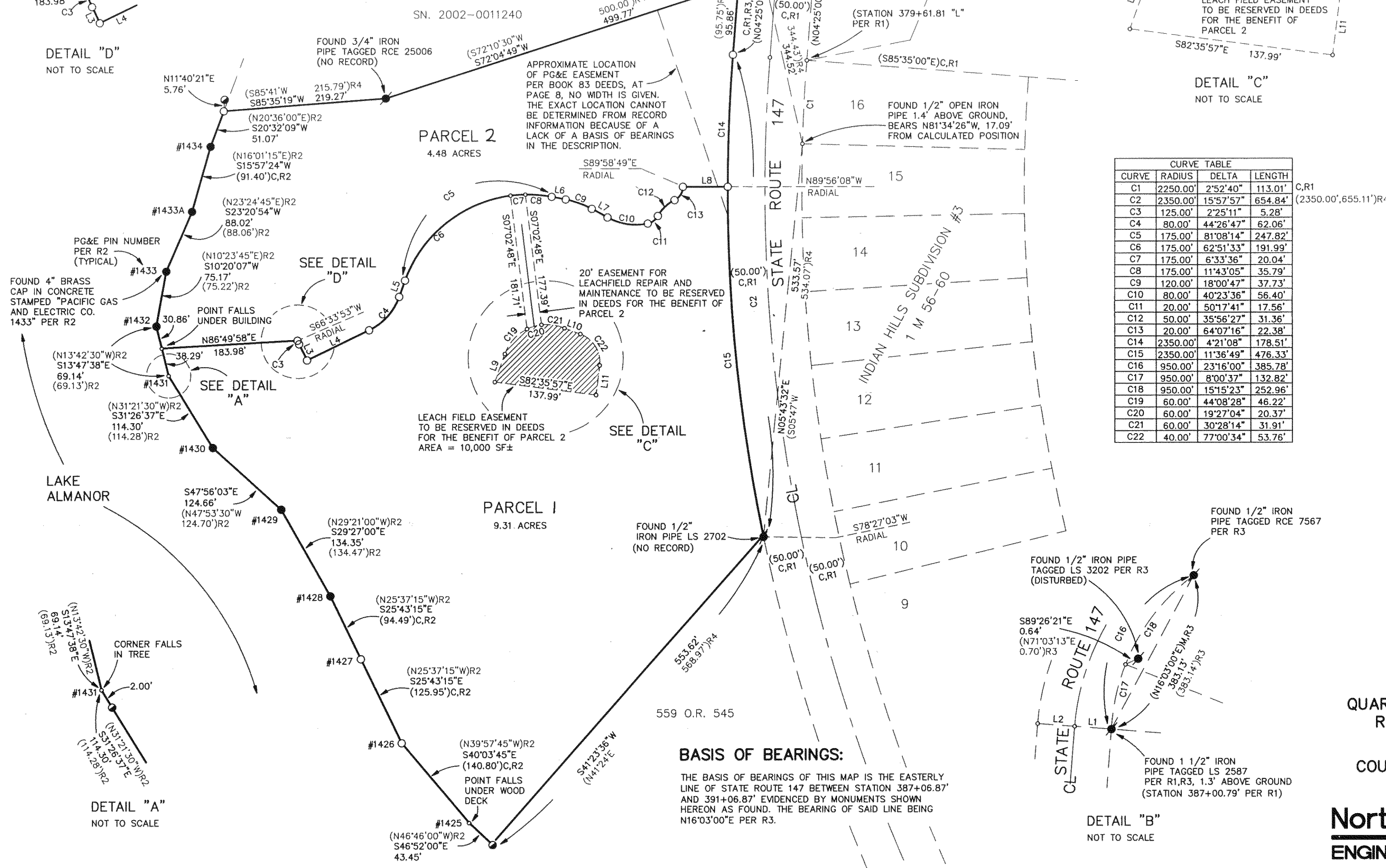


SCALE: 1" = 100'

LINE	BEARING	DISTANCE
L1	N85°35'00"W	50.00'
L2	N85°35'00"W	50.00'
L3	S25°51'18"E	24.28'
L4	N64°08'42"E	93.19'
L5	N19°41'55"E	23.33'
L6	S79°09'51"E	19.28'
L7	S61°09'04"E	24.18'
L8	S89°57'08"E	60.33'
L9	N19°41'55"E	40.33'
L10	S69°55'11"E	23.00'
L11	N07°05'23"E	40.34'



DETAIL "D"
NOT TO SCALE



LAKE ALMANOR

PARCEL 1
9.31 ACRES

PARCEL 2
4.48 ACRES

STATE ROUTE 147

INDIAN HILLS SUBDIVISION #3
1 M 56-60

CURVE	RADIUS	DELTA	LENGTH
C1	2250.00'	2°52'40"	113.01'
C2	2350.00'	15°57'57"	654.84'
C3	125.00'	2°25'11"	5.28'
C4	80.00'	44°26'47"	62.06'
C5	175.00'	81°08'14"	247.82'
C6	175.00'	62°51'33"	191.99'
C7	175.00'	6°33'36"	20.04'
C8	175.00'	11°43'05"	35.79'
C9	120.00'	18°00'47"	37.73'
C10	80.00'	40°23'36"	56.40'
C11	20.00'	50°17'41"	17.56'
C12	50.00'	35°56'27"	31.36'
C13	20.00'	64°07'16"	22.38'
C14	2350.00'	4°21'08"	178.51'
C15	2350.00'	11°36'49"	476.33'
C16	950.00'	23°16'00"	385.78'
C17	950.00'	8°00'37"	132.82'
C18	950.00'	15°15'23"	252.96'
C19	60.00'	44°08'28"	46.22'
C20	60.00'	19°27'04"	20.37'
C21	60.00'	30°28'14"	31.91'
C22	40.00'	77°00'34"	53.76'

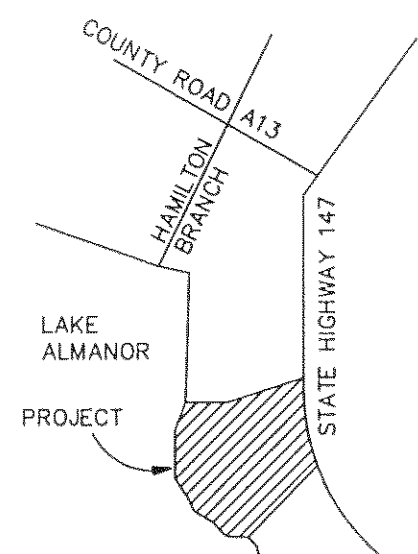
CURVE TABLE

LEGEND

- FOUND 5/8" REBAR AND ALUMINUM CAP STAMPED "PG&E COMPANY" PER R2 OR AS NOTED
- FOUND 1/2" REBAR AND CAP TAGGED LS 3989 (NO RECORD)
- FOUND MONUMENT AS NOTED
- SET 3/4" IRON PIPE OR 1/2" REBAR AND CAP TAGGED LS 5616
- CALCULATED POINT NOTHING FOUND OR SET
- M INDICATES MEASURED DATA THAT MATCHES RECORD DATA
- C INDICATES CALCULATED DATA THAT MATCHES RECORD DATA
- R1 RECORD DATA PER MAP BOOK 1 M, AT PAGES 56-60
- R2 RECORD DATA PER MAP BOOK 2 RS, AT PAGES 47-68
- R3 RECORD DATA PER MAP BOOK 11 RS, AT PAGE 108
- R4 RECORD DATA PER SERIAL NUMBER 2006-0010171
- () EMBRACES RECORD DATA OR CALCULATED AND/OR MEASURED DATA THAT MATCHES RECORD DATA

NOTES:

1. THE BOUNDARY OF THE PARCEL SHOWN HEREON ALONG LAKE ALMANOR IS THE 4500' CONTOUR BASED ON PG&E DATUM. THE LINE SHOWN HEREON IS A MEANDER OF THE 4500' CONTOUR AS SHOWN ON R2. THE ACTUAL BOUNDARY WILL FOLLOW THE 4500' CONTOUR AS IT EXISTS ON THE GROUND AND MAY OR MAY NOT FOLLOW THE MEANDER LINE AS SHOWN HEREON AND ON R2.
2. BOOK 108, OFFICIAL RECORDS, PAGE 335 DESCRIBES AN EFFECT OF A GRANT OF THE RIGHT TO RAISE THE WATER LEVEL OF LAKE ALMANOR RESERVOIR AND APPURTENANT RIGHTS THERE TO IN THE AGREEMENT TO PACIFIC GAS AND ELECTRIC COMPANY.



LOCATION MAP
NOT TO SCALE

PARCEL MAP

FOR
TOPOL DEVELOPMENT COMPANY,
 A NEVADA CORPORATION
 (DOC. NO. 2006-0010171)
 A PORTION OF THE SOUTHEAST
 QUARTER OF SECTION 21, TOWNSHIP 28 NORTH,
 RANGE 8 EAST, MOUNT DIABLO MERIDIAN
 COUNTY OF PLUMAS - STATE OF CALIFORNIA

BASIS OF BEARINGS:
 THE BASIS OF BEARINGS OF THIS MAP IS THE EASTERLY LINE OF STATE ROUTE 147 BETWEEN STATION 387+06.87' AND 391+06.87' EVIDENCED BY MONUMENTS SHOWN HEREON AS FOUND. THE BEARING OF SAID LINE BEING N16°03'00"E PER R3.

NorthStar
ENGINEERING

CIVIL ENGINEERS • PLANNERS • SURVEYORS
 111 MISSION RANCH BLVD., SUITE 100 • CHICO, CALIFORNIA 95926
 (530) 893-1600 FAX (530) 893-2113