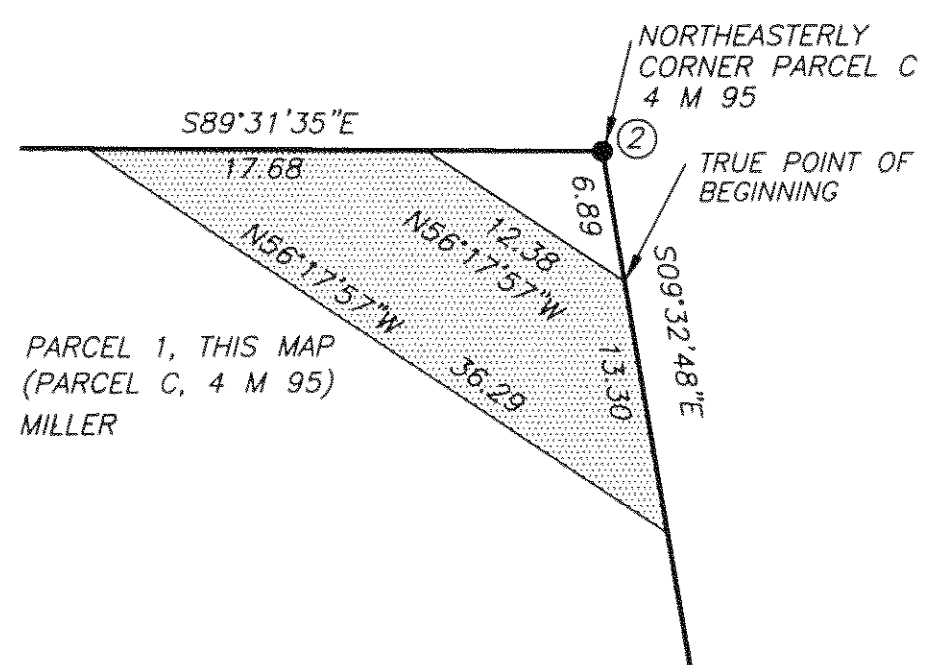


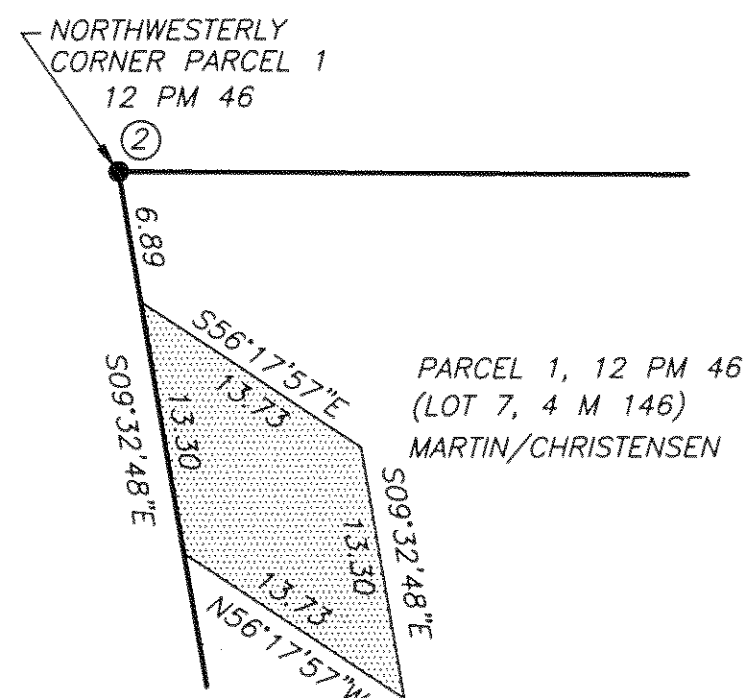
EASEMENT No. 8

DRAINAGE EASEMENT
MILLER TO PLUMAS COUNTY



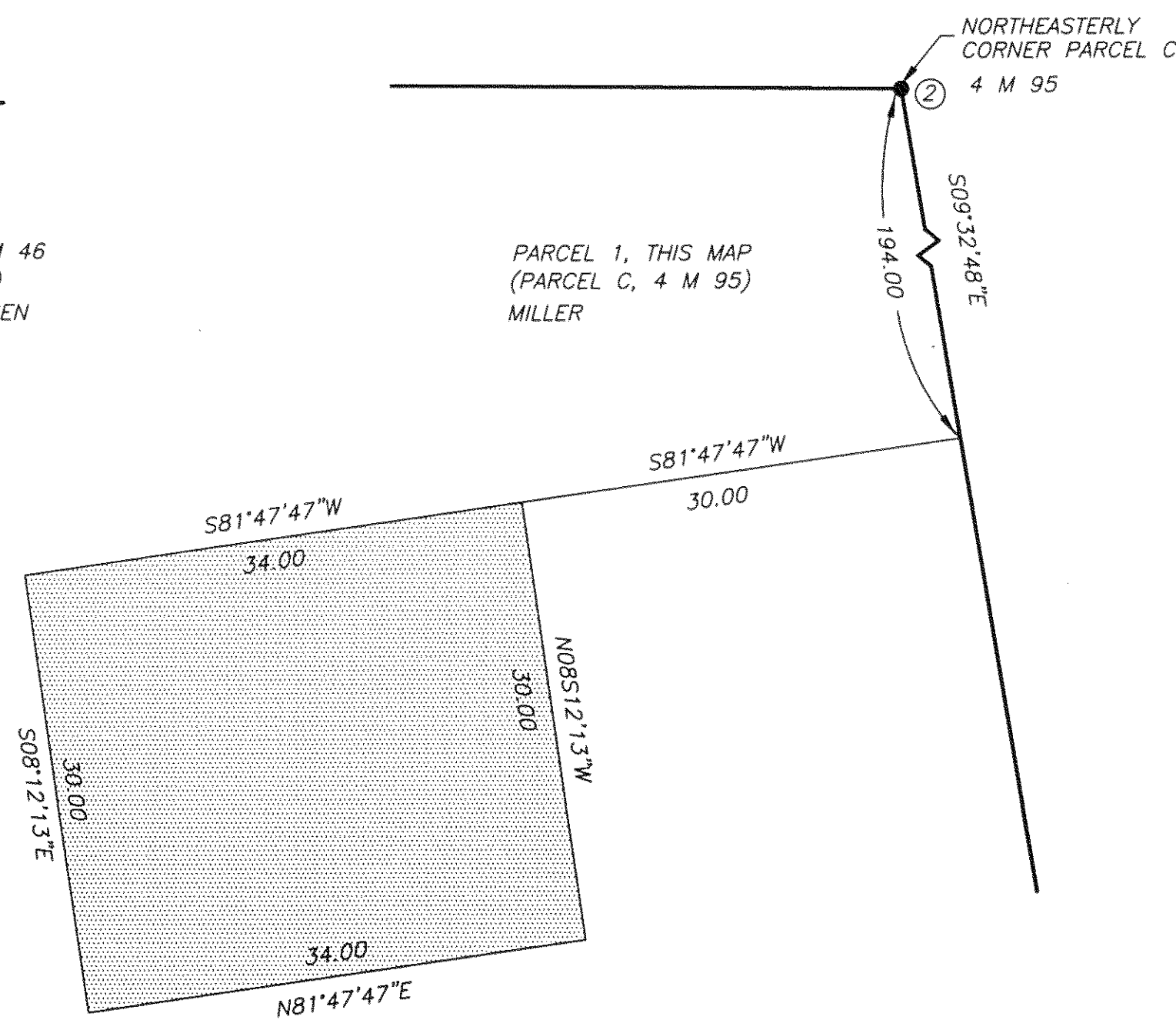
EASEMENT No. 13

DRAINAGE EASEMENT
MARTIN/CHRISTENSEN TO PLUMAS COUNTY



EASEMENT No. 10

SNOW STORAGE AREA
MILLER TO BENEFIT ALL GRANTEES



SCALE

1 INCH = 10 FEET



CORNER NOTES

② FOUND: 1/2" REBAR W/ALUM CAP STAMPED LS7794
IN 8" DIA X 8" DEEP CONCRETE 2" BELOW
GROUND AS SHOWN ON (R9)
SET: NOTHING

LEGEND

- PROPERTY LINE
- FOUND MONUMENT
(R9 13 RS 75 KNOETTGEN 2004)

PARCEL MAP
 FOR
WAYNE J. MILLER AND RUTH J. MILLER
 A DIVISION OF PARCEL C, SIERRA GROVE, 4 M 95
 SECTION 19 T24N R10E MOUNT DIABLO MERIDIAN
 PLUMAS COUNTY, CALIFORNIA
 KNOETTGEN LAND SURVEYING
 1830 CHANDLER ROAD PO BOX 312
 QUINCY, CA 95971
 (530) 283-4418
 DECEMBER 2006 SHEET: 3 OF 3