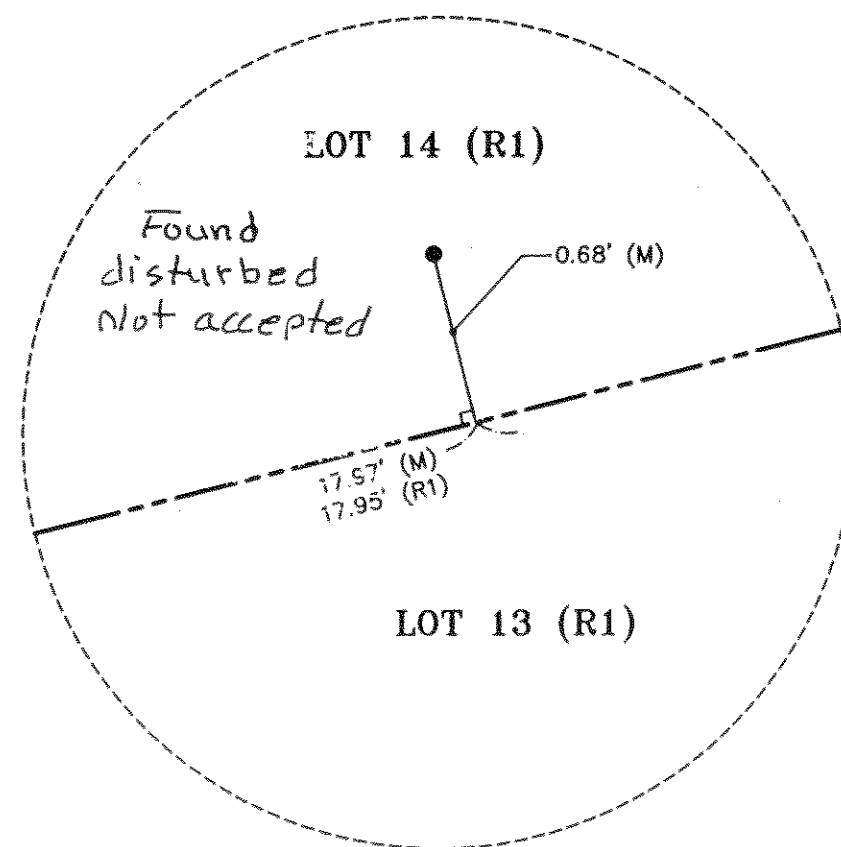


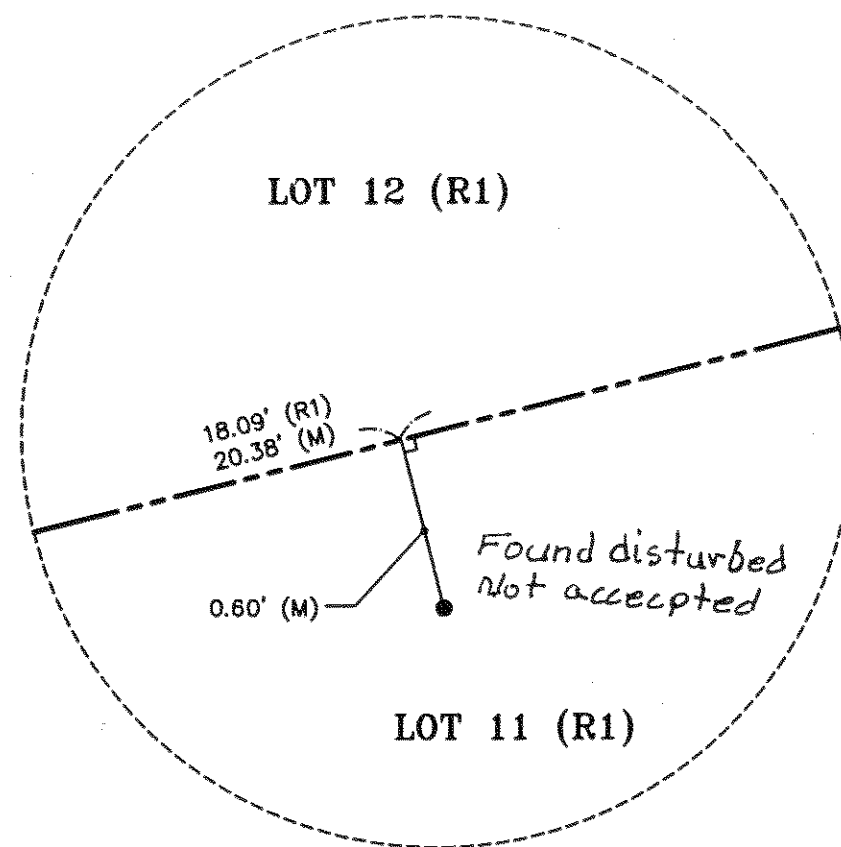
NOTES:

EASEMENTS OF RECORD THAT AFFECT THESE PARCELS:

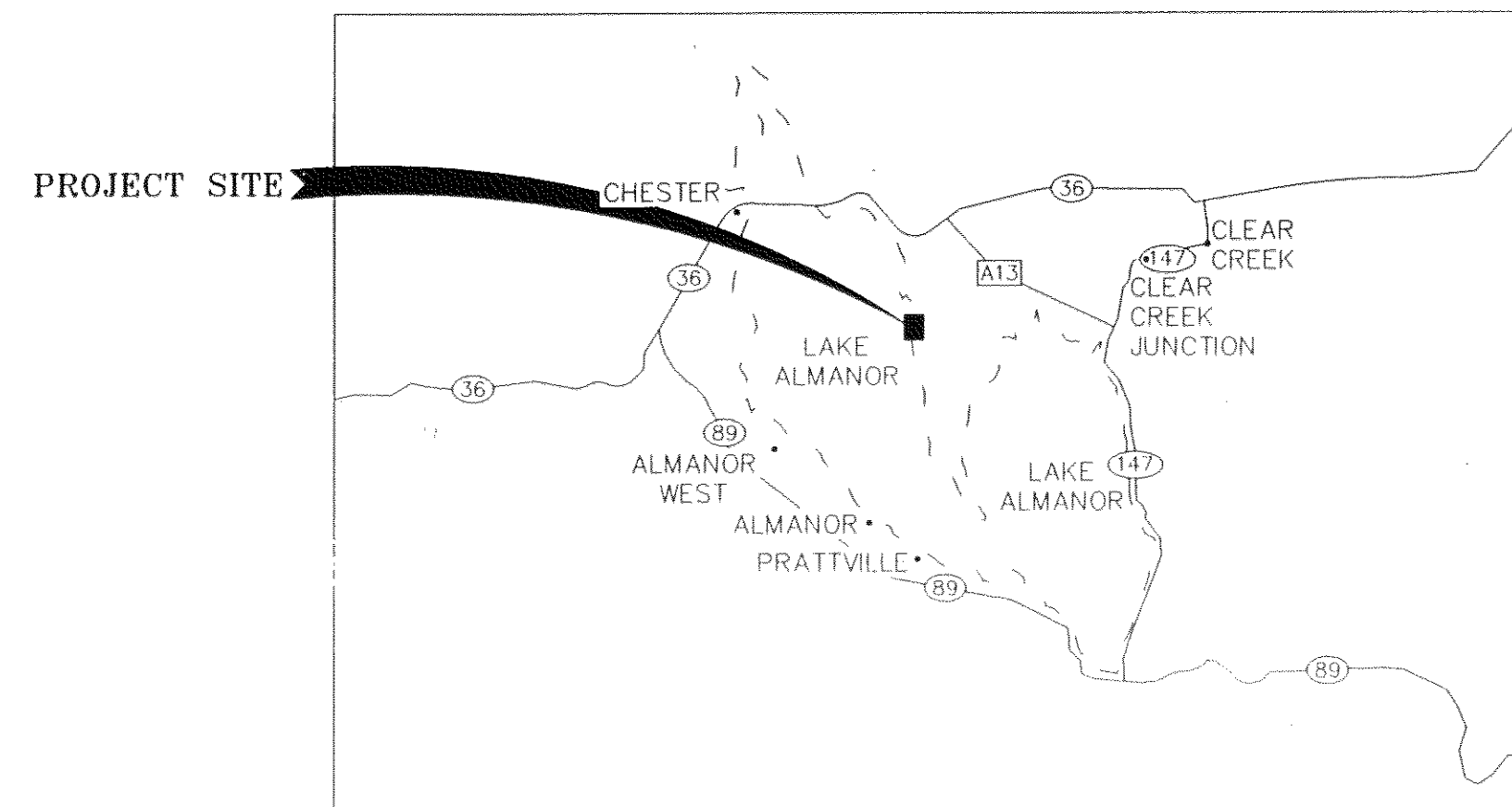
- 1) O.R. BOOK 362, PAGE 490, NON-EXCLUSIVE EASEMENT FOR MAINTENANCE, CUT OR FILL, PUBLIC UTILITIES AND DRAINAGE. LAKE ALMANOR COUNTRY CLUB, GRANTEE.
- 2) O.R. BOOK 362, PAGE 484, MAINTENANCE AGREEMENTS. LAKE ALMANOR COUNTRY CLUB, GRANTEE. CANNOT BE DELINEATED ON THIS MAP.
- 3) O.R. BOOK 800, PAGE 190, RIGHT TO BUILD AND MAINTAIN A VEHICLE TURNAROUND ON LOT 12, PER R1. ELDON M. STERLING AND FRED A. STERLING, GRANTEES.
- 4) O.R. BOOK 522, PAGE 42 AND 44, MAINTENANCE OF ACCESS DRIVEWAYS. J. D. ZINK, GRANTEE. CANNOT BE DELINEATED ON THIS MAP.
- 5) O.R. BOOK 773, PAGE 346, MASTER UTILITY DISTRIBUTION AND SERVICE LINE EASEMENT. PACIFIC GAS AND ELECTRIC COMPANY, GRANTEE. CANNOT BE DELINEATED ON THIS MAP.
- 6) O.R. BOOK 397, PAGE 400, MAINTENANCE OF ACCESS DRIVEWAYS. OWNERS' OF LOTS 11 THROUGH 15, GRANTEES. CANNOT BE DELINEATED ON THIS MAP.
- 7) O.R. BOOK 108, PAGE 335, RIGHTS TO RAISE WATER LEVEL. PACIFIC GAS AND ELECTRIC COMPANY, GRANTEE. CANNOT BE DELINEATED ON THIS MAP.



DETAIL "A"
NTS



DETAIL "B"
NTS



LOCATION MAP
N.T.S.

PARCEL MAP

RE-DIVIDING LOTS 12 AND 13 AS SHOWN ON THAT CERTAIN MAP ENTITLED "LAKE ALMANOR COUNTRY CLUB UNIT 21" BOOK 5 OF MAPS AT PAGES 47, 48 & 49 IN A PORTION OF NW 1/4 SECTION 25, T.28N., R.7E., M.D.M. COUNTY OF PLUMAS STATE OF CALIFORNIA

FOR
ERIC AND ALLISON HART
AND
PHILLIP AND SHELLY FIGONE

LUMOS & ASSOCIATES, INC.
3259 ESPLANADE, SUITE 102
CHICO, CALIFORNIA 95973
(530) 899-9503