

## NOTES:

LEACH EXCLUSION AREAS ARE DESIGNATED BY SHADING AND CAN ONLY BE CHANGED WITH WRITTEN APPROVAL OF THE PLUMAS COUNTY ENVIRONMENTAL HEALTH DEPARTMENT.

ADDITIONAL LEACH EXCLUSION AREAS ARE 5' FROM ALL PROPERTY LINES, 50' FROM SEASONAL WATERCOURSES, 100' FROM YEAR-ROUND WATERCOURSES AND 100' FROM ALL EXISTING OR DESIGNATED WELL SITES.

THE DESIGNATED SEWAGE DISPOSAL AREA, SIZED ACCORDING TO SURFACE AND SUBSURFACE CHARACTERISTICS AND UTILIZING TABLE II OF PLUMAS COUNTY CODE SECTION 6-11.07 MINIMUM AREA REQUIRED.

DEVELOPMENT IN THE DESIGNATED SEWAGE DISPOSAL AREA ARE IS RESTRICTED WITHOUT PRIOR APPROVAL FROM THE PLUMAS COUNTY ENVIRONMENTAL HEALTH DEPARTMENT.

RELOCATION OF DESIGNATED SEWAGE DISPOSAL AREAS ARE SUBJECT TO APPROVAL BY THE PLUMAS COUNTY ENVIRONMENTAL HEALTH DEPARTMENT.

UNDER 1275.00 et seq. OF THE SRA FIRE SAFE REGULATIONS AND THE PROVISIONS OF ARTICLE 10 OF CHAPTER 4 OF TITLE 9, COMMENCING WITH SECTION 9-4.1001 OF THE PLUMAS COUNTY CODE, EMERGENCY WATER FOR FIRE PROTECTION SHALL BE REQUIRED BEFORE FINAL INSPECTIONS FOR BUILDING CONSTRUCTION.

CONSTRUCTION ON PARCEL 2 WILL REQUIRE ADDITIONAL NOISE ATTENUATION MEASURES SO THAT INTERIOR RESIDENTIAL NOISE LEVELS OF 45db ARE ACHIEVED.

## LEGEND

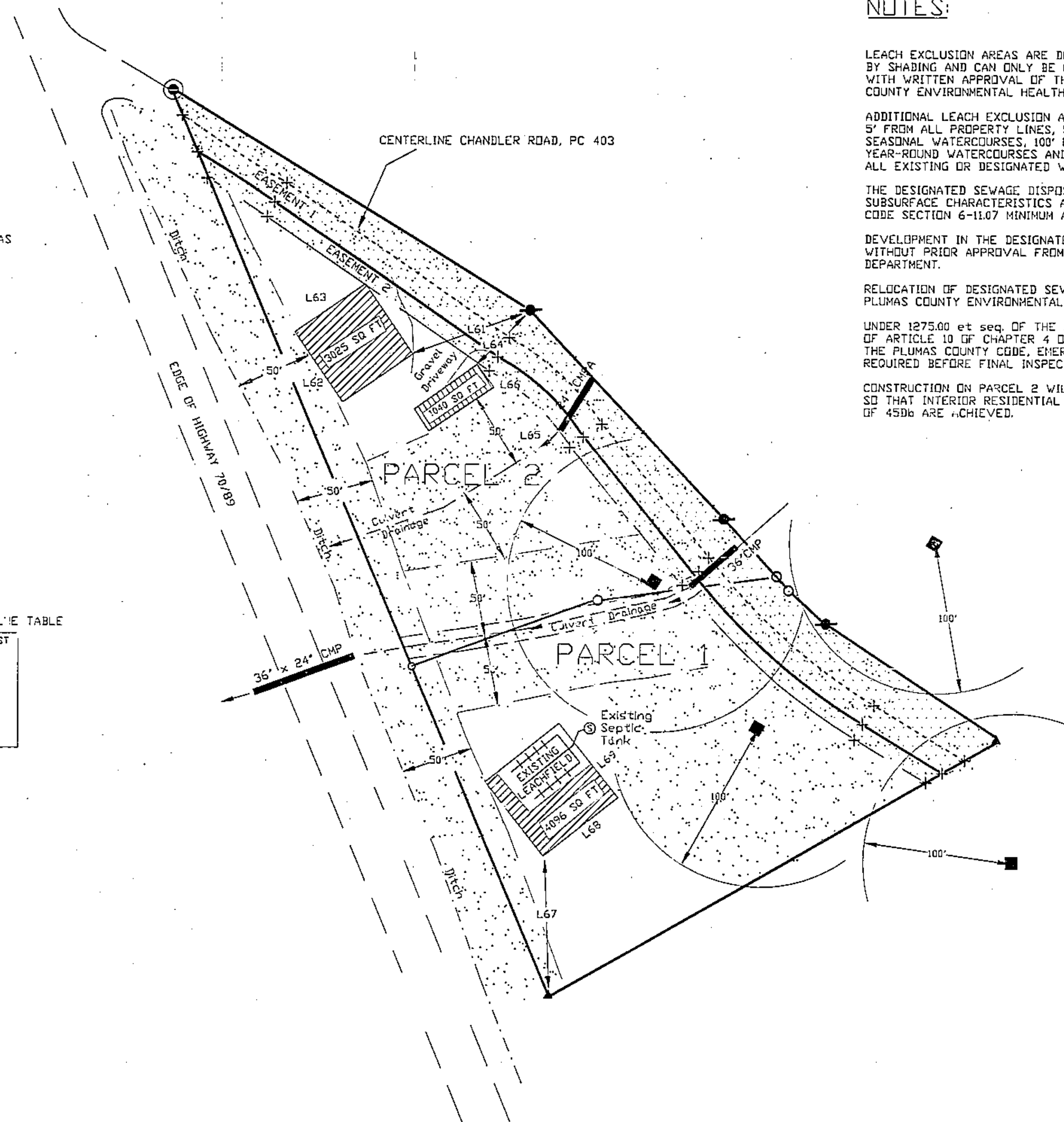
DESIGNATED LEACH FIELD AREAS

LEACH EXCLUSION AREAS

EXISTING WELL LOCATIONS

DESIGNATED LEACHFIELD LINE TABLE

LINE	BEARING	HORIZ DIST
L61	N70°07'47"E	83.95'
L62	N40°00"W	55.00'
L63	N50°00"E	55.00'
L64	N46°10'08"L	35.98'
L65	N44°00"E	20.00'
L66	N46°00"W	52.00'
L67	N01°41'15"E	93.51'
L68	N51°00"E	64.00'
L69	N39°00"W	64.00'



## ADDITIONAL INFORMATION MAP

FOR  
J. Frank and Margaret M. Ruff

PLUMAS COUNTY, CALIFORNIA

BY: RALPH W. KOEHNE  
CALIFORNIA LAND SURVEYOR LS 5147  
CIVIL ENGINEER RCE 38356  
BOX 214, QUINCY, CA. 95971  
(530) 283-0677

SEPTEMBER 17, 2010

SHEET 3 OF 3