

**CURVE TABLE**

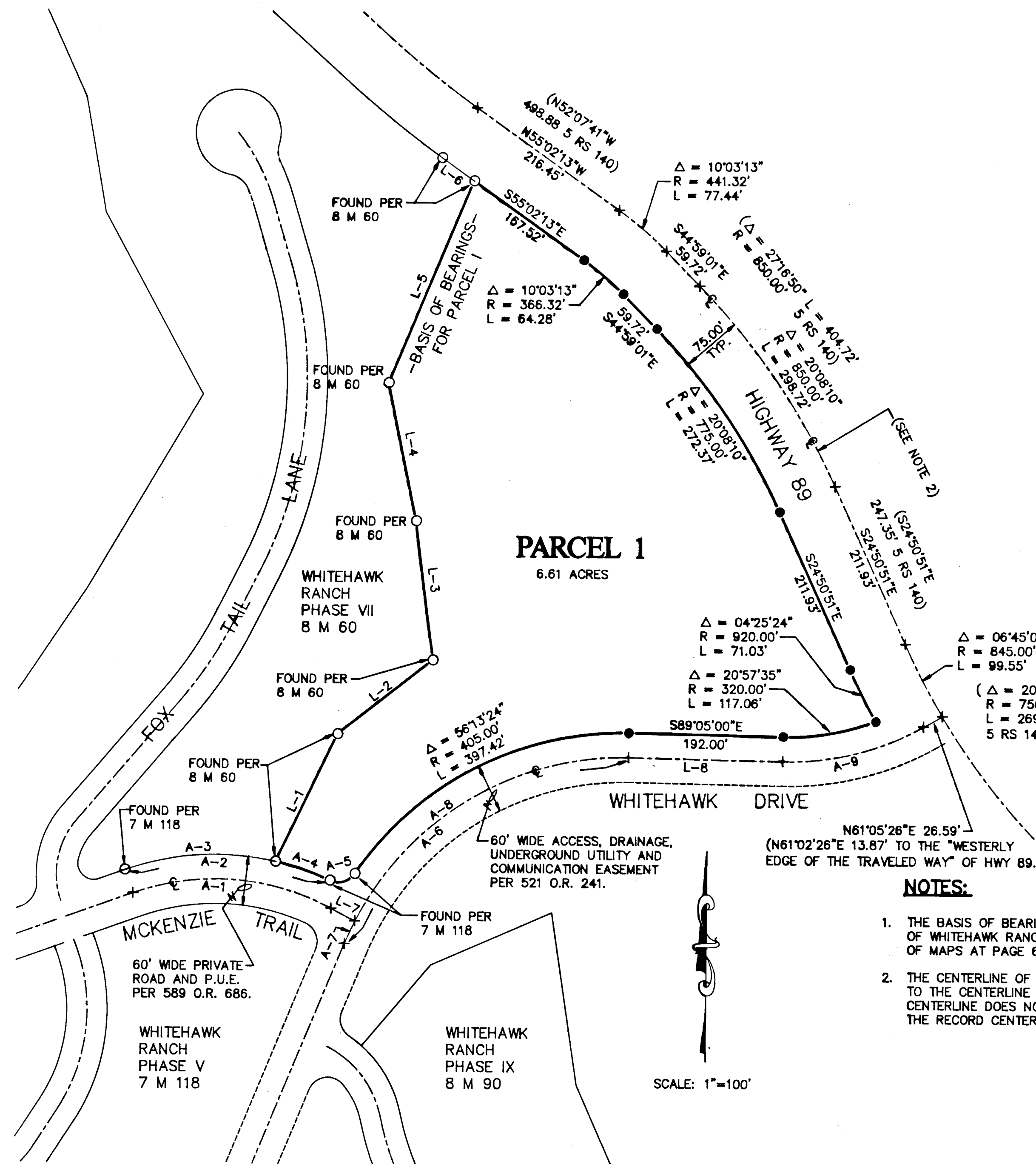
CURVE	RADIUS	LENGTH	DELTA	RECORD	
A-1	(310.00')	253.80'	46°54'32"	7 M 118	(R & C)
A-2	(340.00')	261.61'	44°05'06"	7 M 118	(R & M)
A-3	(340.00')	190.08'	32°01'54"	8 M 60	(R & M)
A-4	(340.00')	71.53'	12°03'12"	8 M 60	(R & M)
A-5	(25.00')	34.86'	79°53'13"	7 M 118	(R & M)
A-6	(375.00')	446.15'	68°10'00"	521 O.R. 241	(R & C)
A-7	(375.00')	30.46'	04°39'15"	521 O.R. 241	(R & C)
A-8	(375.00')	415.69'	63°30'45"	521 O.R. 241	(R & C)
A-9	(350.00')	182.20'	29°49'34"	521 O.R. 241	(R & C)

**TANGENT TABLE**

LINE	DIRECTION	DISTANCE	RECORD	
L-1	(N25°51'13"E)	173.70'	8 M 60	(R & M)
L-2	(N52°18'14"E)	149.08'	8 M 60	(R & M)
L-3	(S07°29'30"E)	171.43'	8 M 60	(R & M)
L-4	(N12°01'12"W)	172.07'	8 M 60	(R & M)
L-5	(S22°47'51"W)	268.99'	8 M 60	(R & M)
L-6	(N55°02'13"W)	48.94'	8 M 60	(R & M)
L-7	(N62°35'45"W)	33.54'	7 M 118	(R & C)
L-8	(N89°05'00"W)	192.00'	521 O.R. 241	(R & C)

**LEGEND**

- FOUND MONUMENT : 1/2" REBAR WITH ALUMINUM CAP STAMPED R.C.E. 13225, PER 8 M 60 OR 7 M 118 AS NOTED.
- SET 1/2" REBAR WITH ALUMINUM CAP STAMPED L.S. 7045
- + COMPUTED POINT, NOTHING SET.
- 521 O.R. 241 OFFICIAL RECORD, VOLUME AND PAGE.
- 8 M 60 MAPS, BOOK AND PAGE.
- P.U.E. PUBLIC UTILITY EASEMENT
- ( ) RECORD DATA AS INDICATED.
- (R & M) RECORD AND MEASURED DATA.
- (R & C) RECORD AND CALCULATED DATA.



**PARCEL 1**  
6.61 ACRES

**NOTES:**

1. THE BASIS OF BEARINGS FOR PARCEL 1 OF THIS MAP IS A EASTERLY LINE OF WHITEHAWK RANCH, PHASE VII, SHOWN AS S 22°47'51" W IN BOOK 8 OF MAPS AT PAGE 60, PLUMAS COUNTY RECORDS.
2. THE CENTERLINE OF HIGHWAY 89, AS SHOWN HEREON, CORRESPONDS TO THE CENTERLINE OF THE EXISTING PAVEMENT. THE PAVEMENT CENTERLINE DOES NOT HAVE A CONSISTENT CORRELATION WITH THE RECORD CENTERLINE DATA AS SHOWN ON 5 RS 140.

**WHITEHAWK RANCH  
PARCEL MAP**  
A PLANNED DEVELOPMENT

FOR  
MOHAWK VALLEY RANCH, INC.  
WITHIN A PORTIONS OF SECTION 5, T. 21 N., R. 13 E., M.D.M.  
AND SECTION 32, T. 22 N., R. 13 E., M.D.M.  
PLUMAS COUNTY, CALIFORNIA

PREPARED BY:  
**BASTIAN ENGINEERING**  
P.O. BOX 280  
GRAEAGLE, CALIFORNIA 96103  
L.S.7045

AUGUST 1999

SHEET 2 OF 5

11 PM 60