

See Sheet 4

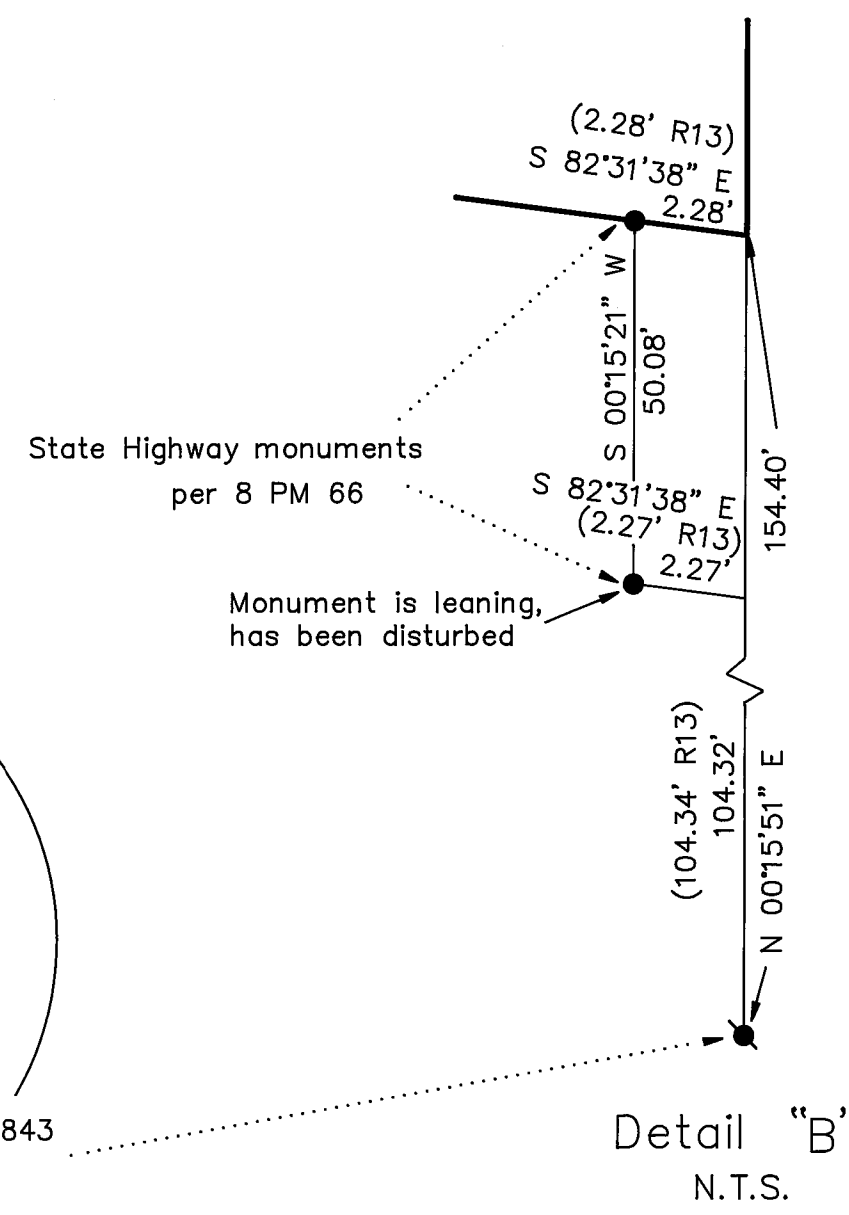
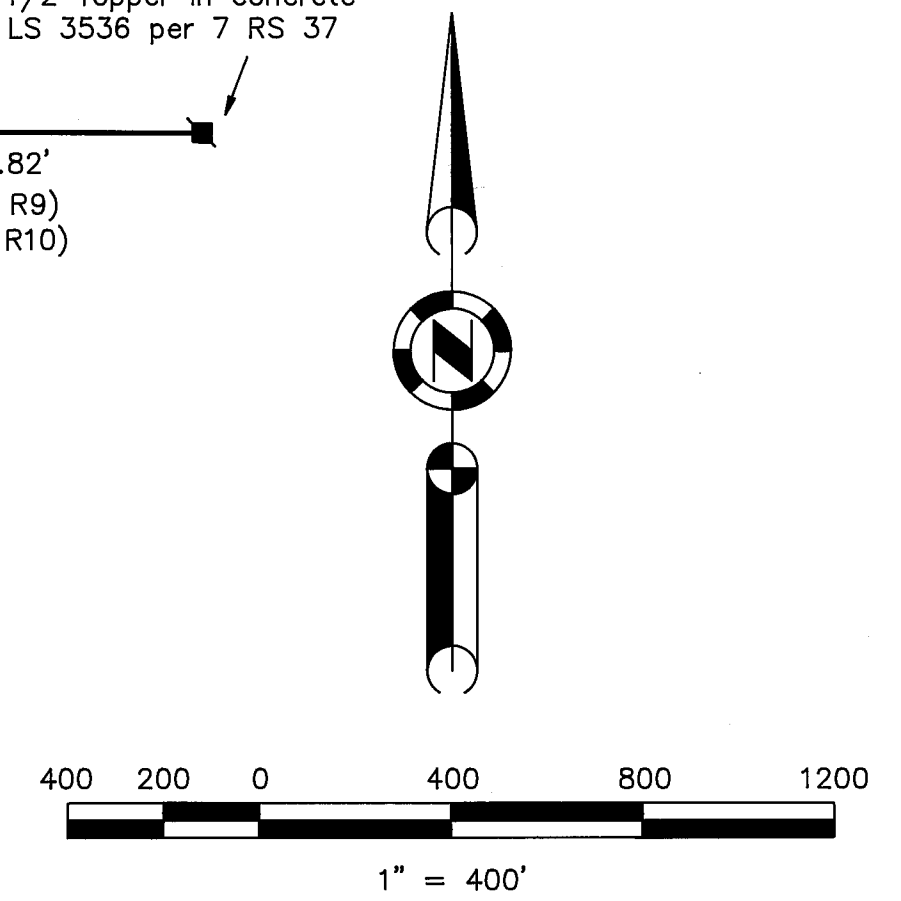
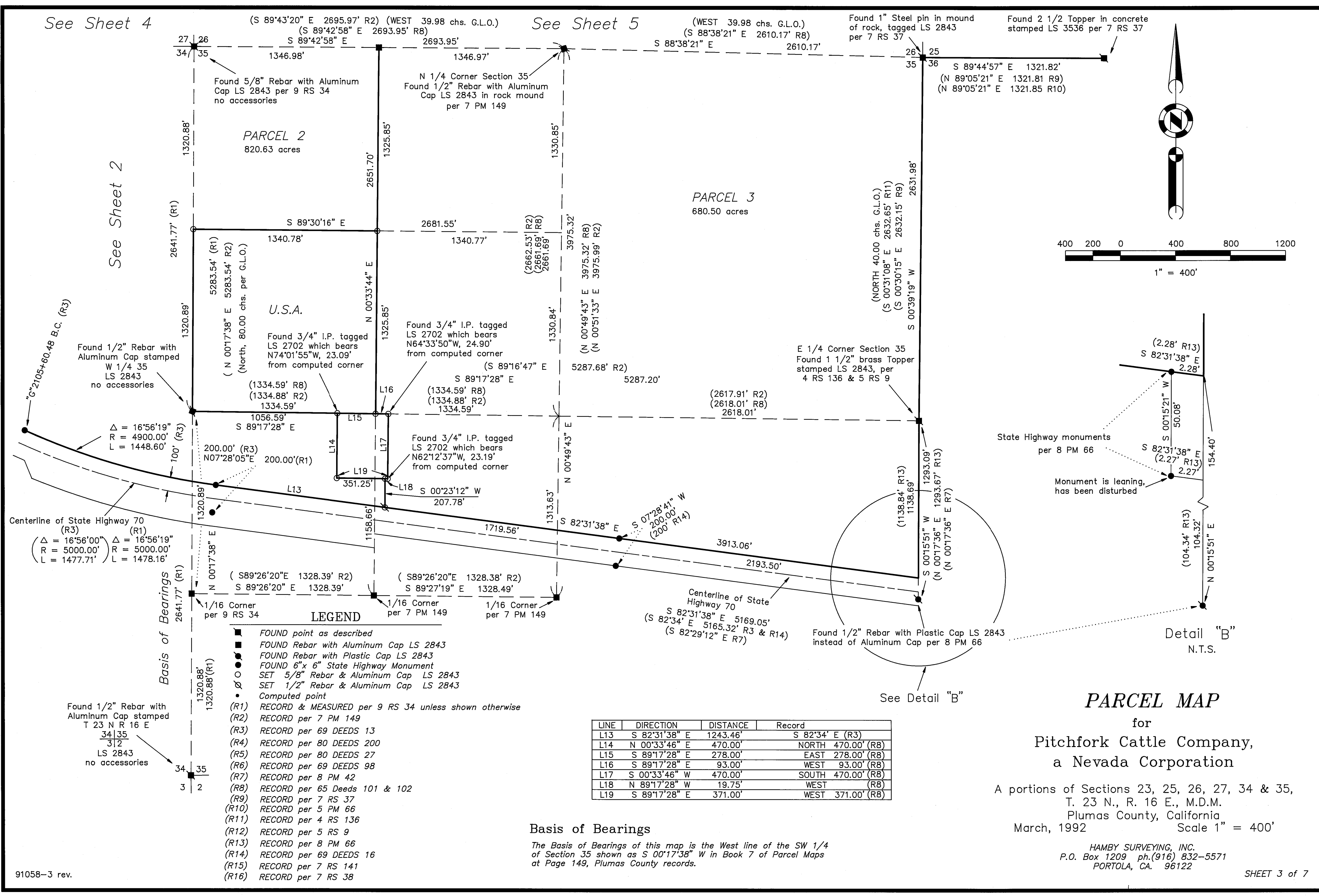
(S 89°43'20" E 2695.97' R2) (WEST 39.98 chs. G.L.O.)
(S 89°42'58" E 2693.95' R8)

See Sheet 5

(WEST 39.98 chs. G.L.O.)
(S 88°38'21" E 2610.17' R8)

Found 1" Steel pin in mound of rock, tagged LS 2843 per 7 RS 37

Found 2 1/2" Topper in concrete stamped LS 3536 per 7 RS 37



PARCEL MAP

for
Pitchfork Cattle Company,
a Nevada Corporation

A portions of Sections 23, 25, 26, 27, 34 & 35,
T. 23 N., R. 16 E., M.D.M.
Plumas County, California
March, 1992 Scale 1" = 400'

HAMBY SURVEYING, INC.
P.O. Box 1209 ph.(916) 832-5571
PORTOLA, CA. 96122