

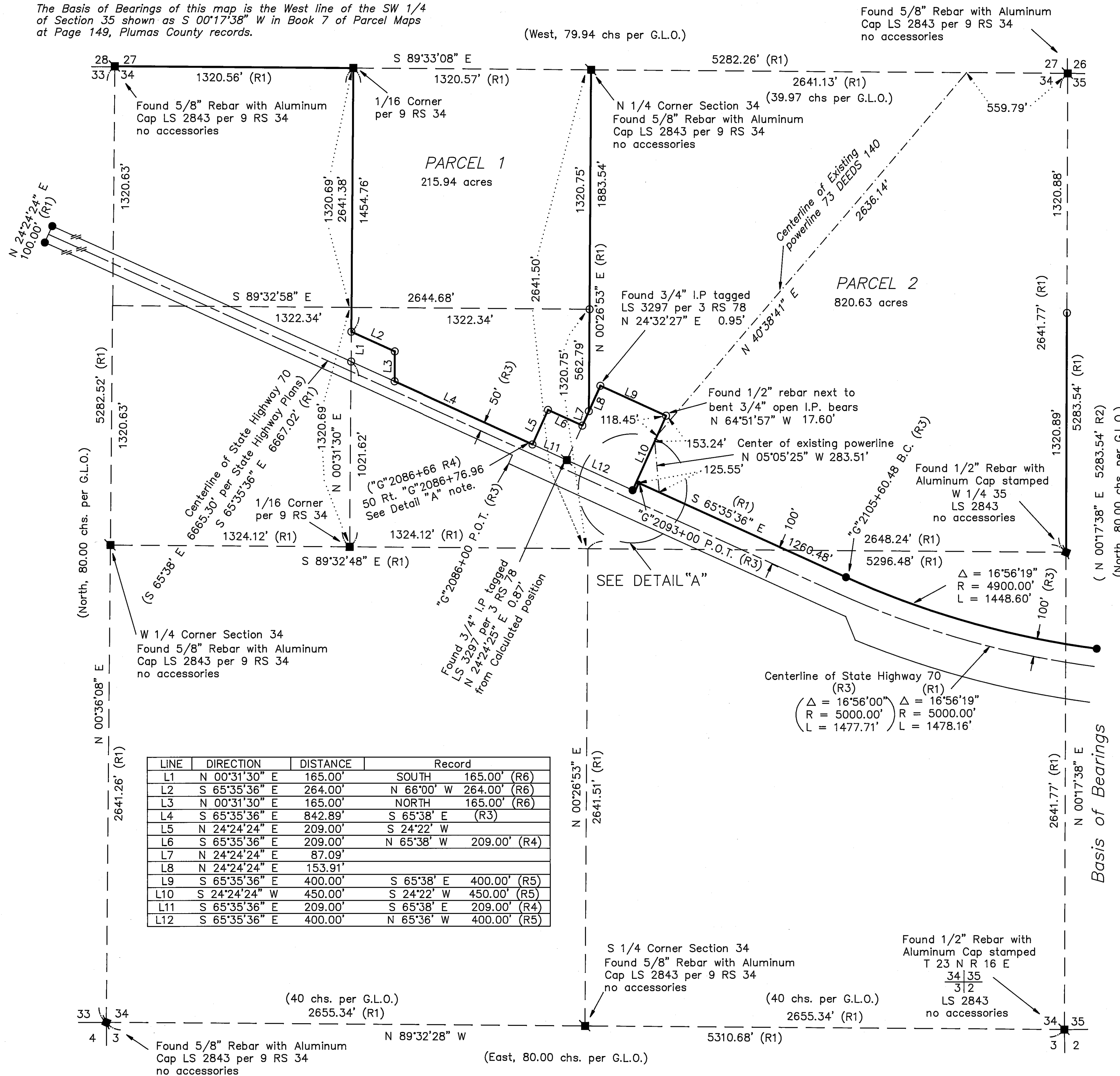
Basis of Bearings

The Basis of Bearings of this map is the West line of the SW 1/4 of Section 35 shown as S 00°17'38" W in Book 7 of Parcel Maps at Page 149, Plumas County records.

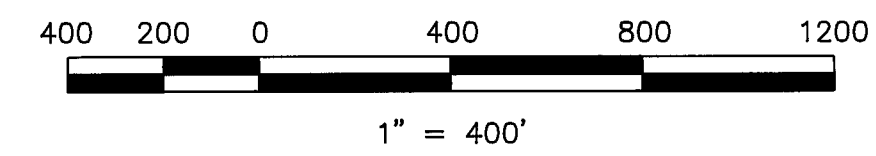
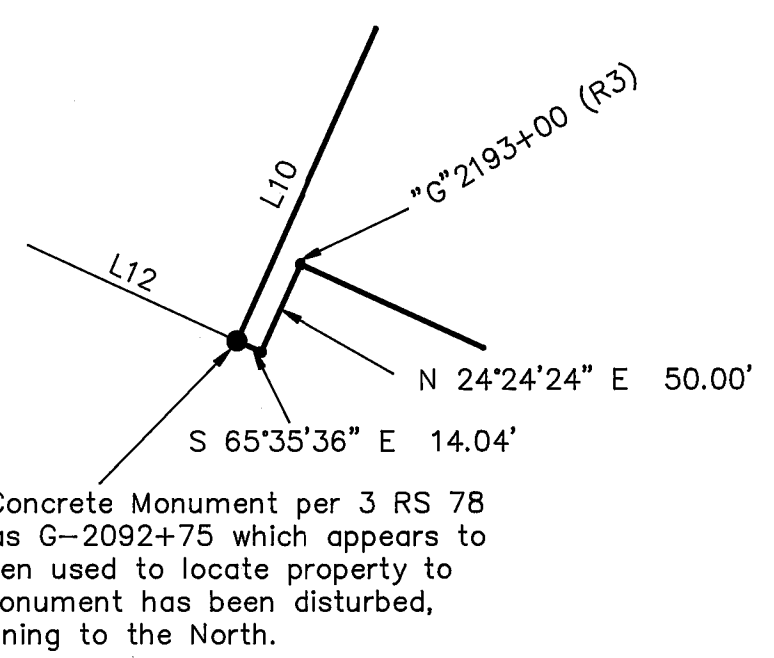
See Sheet 4

See Sheet 3

DETAIL "A"
N.T.S.



See Sheet 3



LEGEND

- FOUND point as described
- FOUND Rebar with Aluminum Cap LS 2843
- FOUND Rebar with Plastic Cap LS 2843
- FOUND 6" x 6" State Highway Monument
- SET 5/8" Rebar & Aluminum Cap LS 2843
- SET 1/2" Rebar & Aluminum Cap LS 2843
- Computed point
- (R1) RECORD & MEASURED per 9 RS 34 unless shown otherwise
- (R2) RECORD per 7 PM 149
- (R3) RECORD per 69 DEEDS 13
- (R4) RECORD per 80 DEEDS 200
- (R5) RECORD per 80 DEEDS 27
- (R6) RECORD per 69 DEEDS 98
- (R7) RECORD per 8 PM 42
- (R8) RECORD per 65 Deeds 101 & 102
- (R9) RECORD per 7 RS 37
- (R10) RECORD per 5 PM 66
- (R11) RECORD per 4 RS 136
- (R12) RECORD per 5 RS 9
- (R13) RECORD per 8 PM 66
- (R14) RECORD per 69 DEEDS 16
- (R15) RECORD per 7 RS 141
- (R16) RECORD per 7 RS 38

LINE	DIRECTION	DISTANCE	Record
L1	N 00°31'30" E	165.00'	SOUTH 165.00' (R6)
L2	S 65°35'36" E	264.00'	N 66°00' W 264.00' (R6)
L3	N 00°31'30" E	165.00'	NORTH 165.00' (R6)
L4	S 65°35'36" E	842.89'	S 65°38' E (R3)
L5	N 24°24'24" E	209.00'	S 24°22' W
L6	S 65°35'36" E	209.00'	N 65°38' W 209.00' (R4)
L7	N 24°24'24" E	87.09'	
L8	N 24°24'24" E	153.91'	
L9	S 65°35'36" E	400.00'	S 65°38' E 400.00' (R5)
L10	S 24°24'24" W	450.00'	S 24°22' W 450.00' (R5)
L11	S 65°35'36" E	209.00'	S 65°38' E 209.00' (R4)
L12	S 65°35'36" E	400.00'	N 65°36' W 400.00' (R5)

PARCEL MAP

for
Pitchfork Cattle Company,
a Nevada Corporation

A portions of Sections 23, 25, 26, 27, 34 & 35,
T. 23 N., R. 16 E., M.D.M.
Plumas County, California
March, 1992 Scale 1" = 400'

HAMBY SURVEYING, INC.
P.O. Box 1209 ph.(916) 832-5571
PORTOLA, CA. 96122