

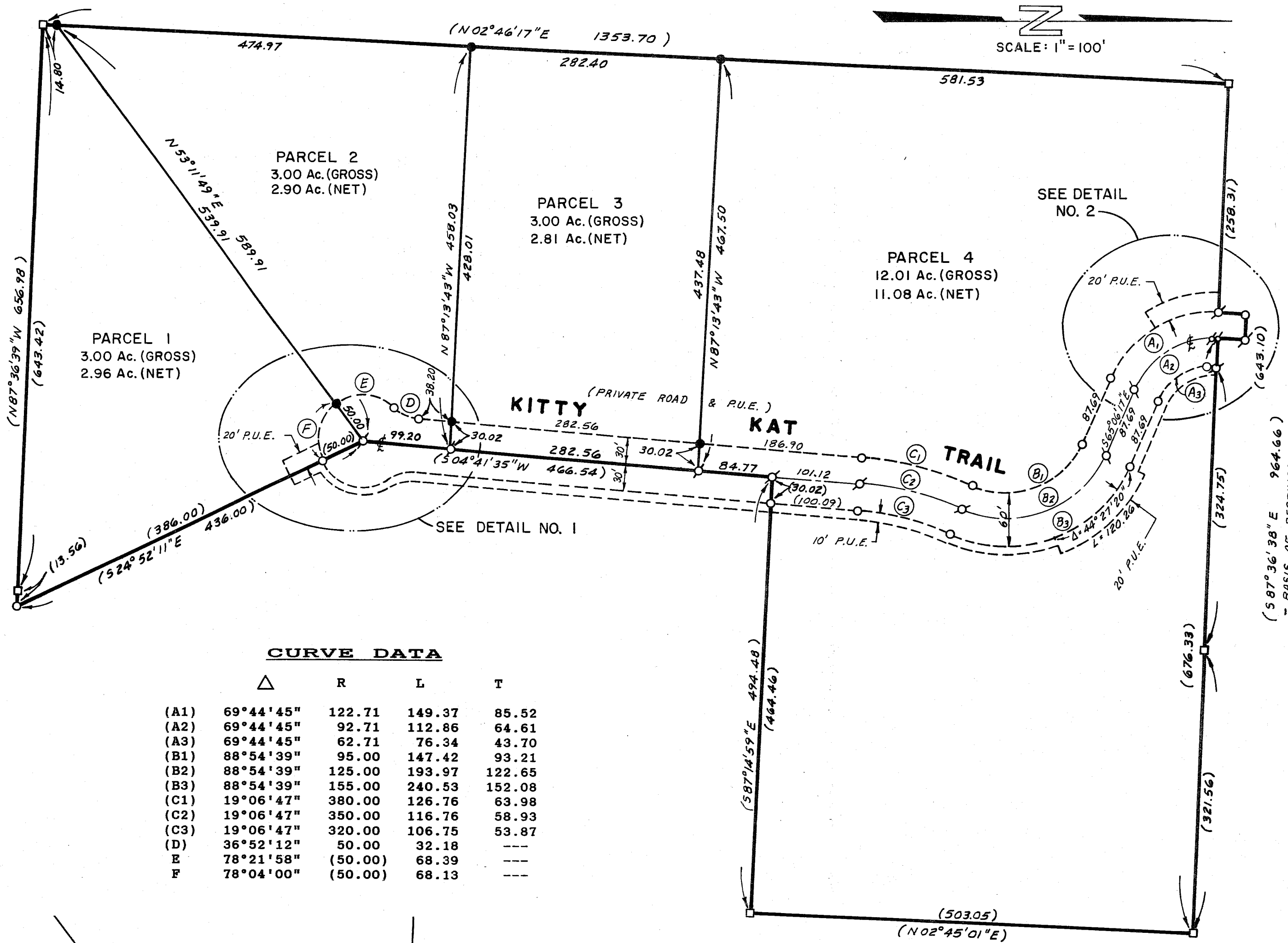
**LEGEND**

- - FOUND ½" REBAR WITH ALUMINUM CAP STAMPED R.C.E. 13225 PER 10 P.M. 63, UNLESS OTHERWISE NOTED.
- - FOUND ½" REBAR WITH ALUMINUM CAP STAMPED L.S. 2843 PER 7 R.S. 40.
- - SET ½" REBAR WITH ALUMINUM CAP STAMPED R.C.E. 13225.
- ⊙ - COMPUTED POINT, NOTHING SET.
- ( ) - RECORD AND MEASURED DATA PER 10 P.M. 63, UNLESS OTHERWISE NOTED.
- 1 P.M. 23 - PARCEL MAP, BOOK AND PAGE.
- 7 R.S. 40 - RECORD OF SURVEY, BOOK AND PAGE.
- O.R. - OFFICIAL RECORD, VOLUME AND PAGE.
- P.U.E. - PUBLIC UTILITY EASEMENT.

NOTE: ALL PUBLIC UTILITY EASEMENTS SHOWN HEREON ARE EXISTING PER 10 P.M. 63.

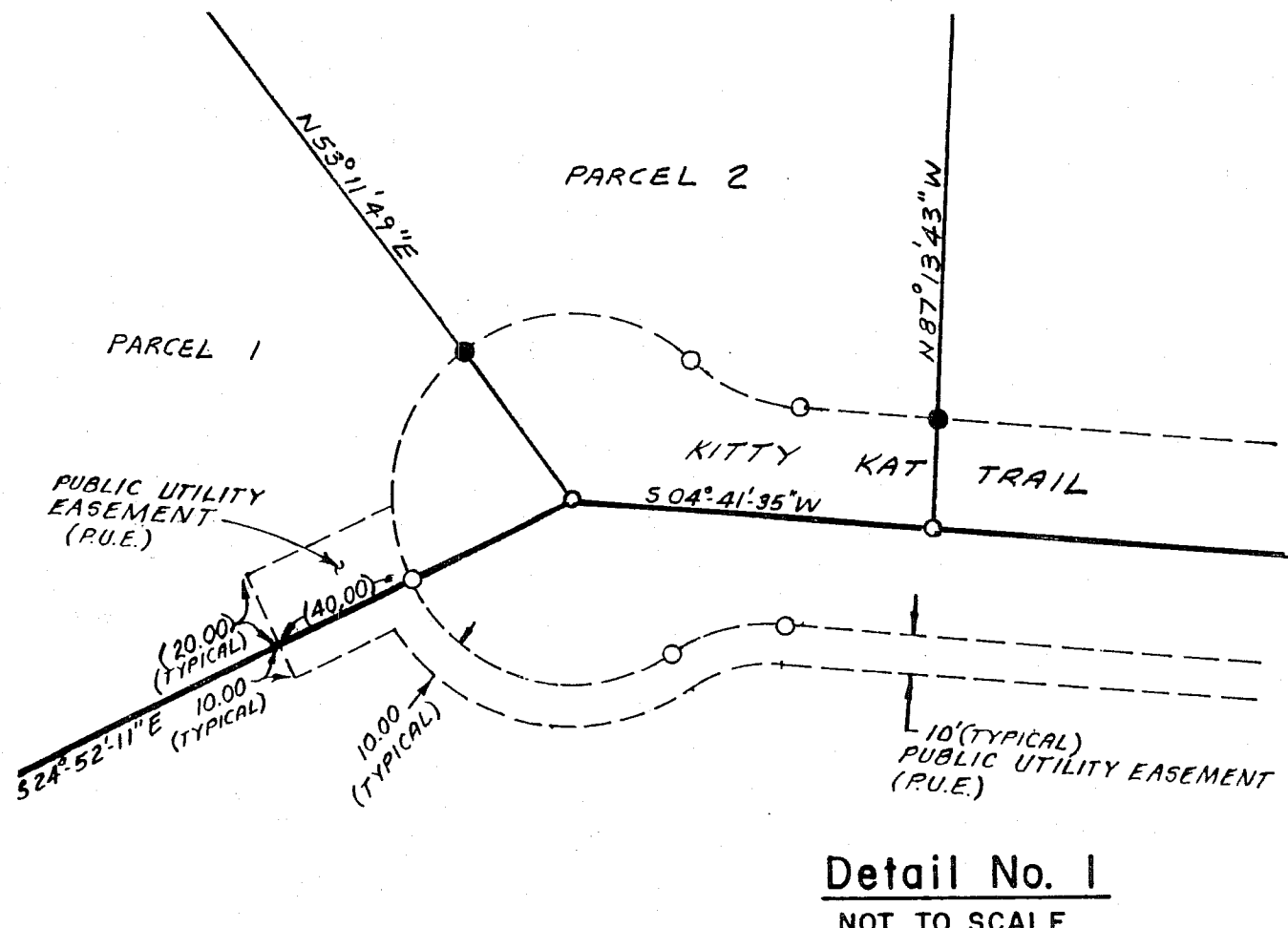
**BASIS OF BEARINGS**

THE BASIS OF BEARINGS FOR THIS MAP IS THE NORTH LINE OF THE SOUTHWEST QUARTER OF SECTION 8, GIVEN AS S 87°36'38" E IN BOOK 10 OF PARCEL MAPS AT PAGE 63, PLUMAS COUNTY RECORDS.

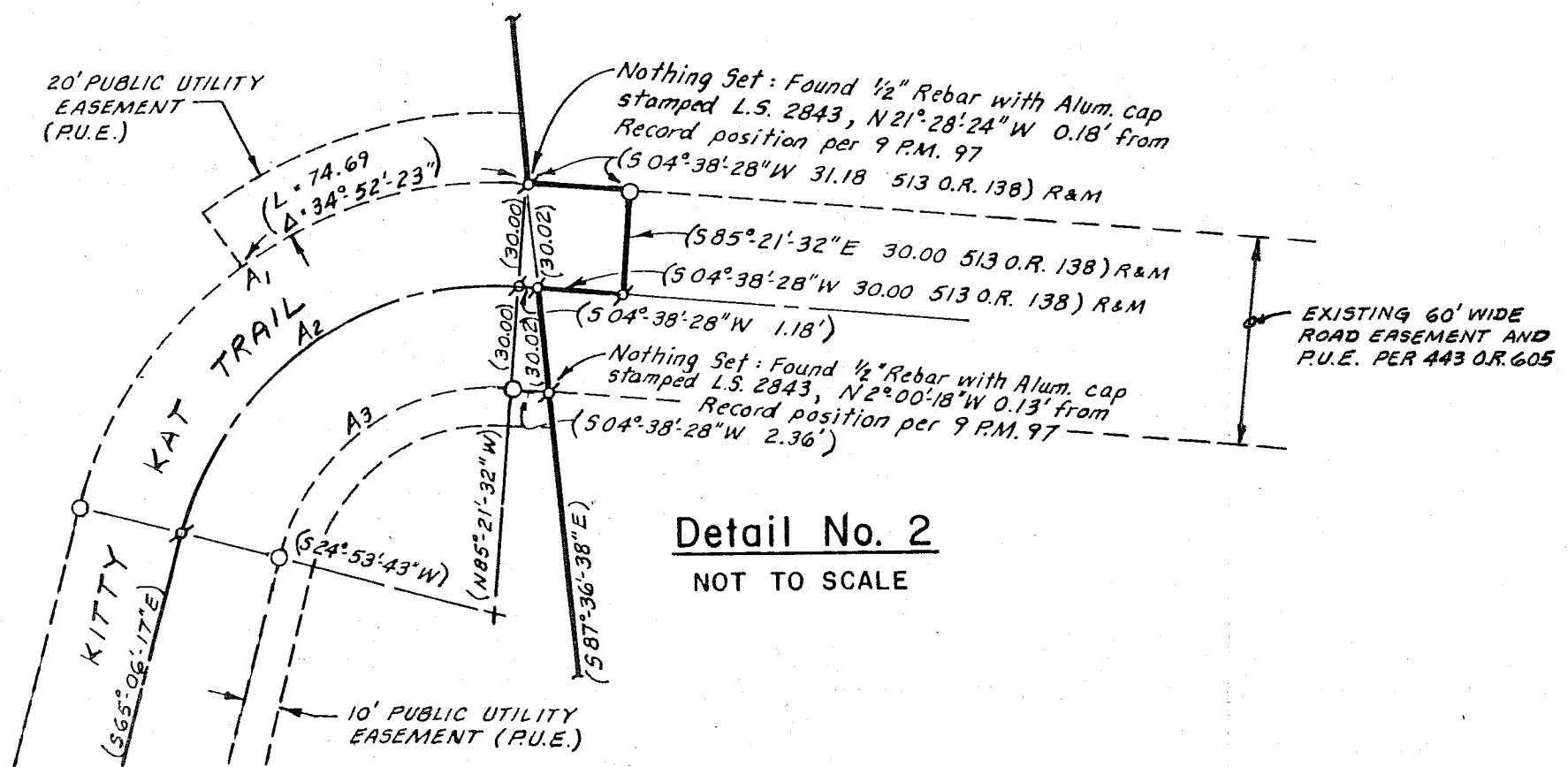


**CURVE DATA**

	Δ	R	L	T
(A1)	69°44'45"	122.71	149.37	85.52
(A2)	69°44'45"	92.71	112.86	64.61
(A3)	69°44'45"	62.71	76.34	43.70
(B1)	88°54'39"	95.00	147.42	93.21
(B2)	88°54'39"	125.00	193.97	122.65
(B3)	88°54'39"	155.00	240.53	152.08
(C1)	19°06'47"	380.00	126.76	63.98
(C2)	19°06'47"	350.00	116.76	58.93
(C3)	19°06'47"	320.00	106.75	53.87
(D)	36°52'12"	50.00	32.18	---
(E)	78°21'58"	(50.00)	68.39	---
(F)	78°04'00"	(50.00)	68.13	---



**Detail No. 1**  
NOT TO SCALE



**Detail No. 2**  
NOT TO SCALE

**PARCEL MAP**

FOR  
**EUREKA REALTY**  
WITHIN THE NE ¼ OF THE SW ¼ AND  
WITHIN THE SE ¼ OF THE NW ¼ OF  
SECTION 8, T. 22 N., R. 13 E., M.D.M.  
PLUMAS COUNTY, CALIFORNIA

PREPARED BY:  
**LARRY FITES ENGINEERING**

P.O. BOX 20308  
GRAEAGLE, CALIFORNIA 96103  
R.C.E. 13225