

**ENGINEER'S STATEMENT**

THIS MAP WAS PREPARED BY ME OR UNDER MY DIRECTION AND IS BASED UPON A FIELD SURVEY IN CONFORMANCE WITH THE REQUIREMENTS OF THE SUBDIVISION MAP ACT AND LOCAL ORDINANCE AT THE REQUEST OF ROBERT CARMODY IN OCTOBER 1992. I HEREBY STATE THAT THIS PARCEL MAP SUBSTANTIALLY CONFORMS TO THE APPROVED OR CONDITIONALLY APPROVED TENTATIVE MAP, IF ANY. ALL THE MONUMENTS SHOWN HEREON ARE OF THE CHARACTER AND OCCUPY THE POSITIONS INDICATED AND ARE SUFFICIENT TO ENABLE THE SURVEY TO BE RETRACED.

*Larry A. Fites*  
 LARRY A. FITES  
 R.C.E. NO. 13225  
 LICENSE EXPIRATION DATE: 3/31/93

**CONCURRENT MAP OWNERSHIP STATEMENT**

A STATEMENT OF OWNERSHIP IS ON FILE WITH THE COUNTY RECORDER IN BOOK 591 OF OFFICIAL RECORDS AT PAGE 246. THE STATEMENT OF OWNERSHIP WAS SIGNED BY ROBERT CARMODY, PRESIDENT, EUREKA REALTY, INC., AND STATED THAT IT CONSENTS TO THE PREPARATION AND RECORDING OF THIS MAP.

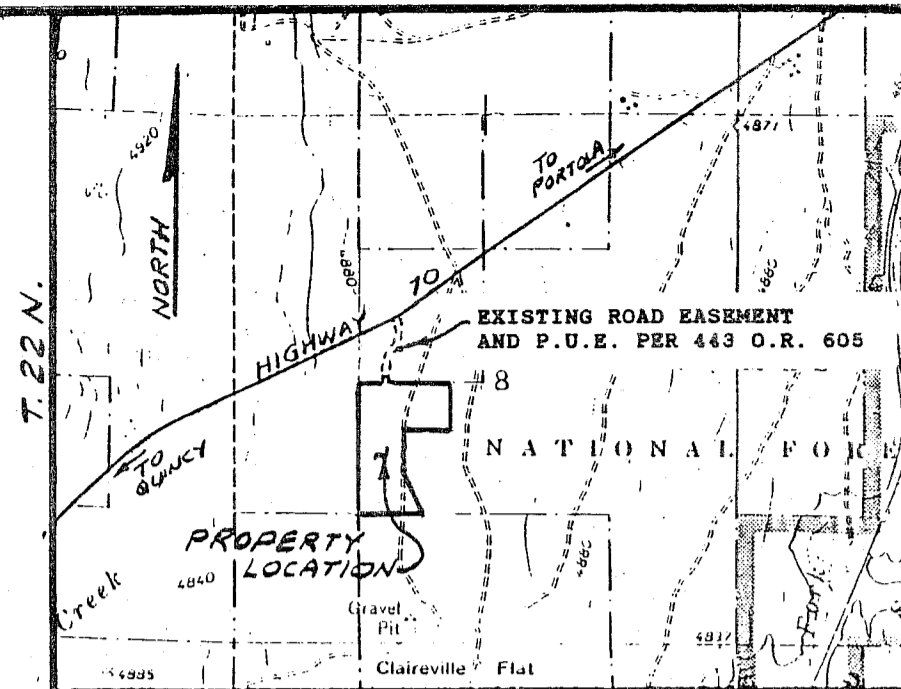
**RECORDER'S CERTIFICATE**

FILED THIS 30TH DAY OF DECEMBER, 1992, AT 11:40 A.M. IN BOOK 10 OF PARCEL MAPS, AT PAGE 69-71, AT THE REQUEST OF THE COUNTY ENGINEER.

JUDITH WELLS  
 COUNTY RECORDER

BY *Sue A. Deary*  
 DEPUTY

FEE \$9.00  
 FILE NO. 10925



**LOCATION MAP**  
 SCALE: 1"=2000'

**COUNTY TAX COLLECTOR'S CERTIFICATE**

I, BARBARA J. COATES, TAX COLLECTOR OF THE COUNTY OF PLUMAS, STATE OF CALIFORNIA, DO HEREBY CERTIFY THAT THERE ARE NO LIENS AGAINST THE PARCELS, AS SHOWN HEREON, FOR UNPAID STATE, COUNTY, MUNICIPAL, OR LOCAL TAXES OR SPECIAL ASSESSMENTS COLLECTED AS TAXES, EXCEPT TAXES OR SPECIAL ASSESSMENTS NOT YET PAYABLE. TAXES OR ASSESSMENTS WHICH ARE A LIEN BUT NOT YET PAYABLE, ARE ESTIMATED TO BE IN THE AMOUNT OF \$ NONE.

DATED: 12/30/92  
*Barbara J. Coates*  
 By: *Benny Dunbar, asst.*  
 BARBARA J. COATES  
 PLUMAS COUNTY TAX COLLECTOR

**AREA TABULATION**

PARCELS 1-4:	19.75 ACRES (NET)
PRIVATE ROADS:	1.26 ACRES
	21.01 ACRES

**COUNTY SURVEYOR'S STATEMENT**

THIS MAP CONFORMS WITH THE REQUIREMENTS OF THE SUBDIVISION MAP ACT AND LOCAL ORDINANCE.

DATED: 12-29-92  
 SIGNED: *R. Tom Hunter*  
 R. TOM HUNTER, R.C.E. 30515  
 COUNTY SURVEYOR  
 EXPIRES 3/31/96

**PARCEL MAP**

FOR  
**EUREKA REALTY**  
 WITHIN THE NE 1/4 OF THE SW 1/4 AND  
 WITHIN THE SE 1/4 OF THE NW 1/4 OF  
 SECTION 8, T. 22 N., R. 13 E., M.D.M.  
 PLUMAS COUNTY, CALIFORNIA

PREPARED BY:  
**LARRY FITES ENGINEERING**  
 P.O. BOX 20308  
 GRAEAGLE, CALIFORNIA 96103  
 R.C.E. 13225