

SURVEYOR'S CERTIFICATE

This map was prepared by me or under my direction and is based upon a field survey in conformance with the requirements of the Subdivision Map Act and Local Ordinance at the request of Frank Green in May 1988. All of the monuments shown hereon are of the character and occupy the positions indicated and are sufficient to enable the survey to be retraced. I hereby state that this parcel map substantially conforms to the approved or conditionally approved tentative map, if any.

Clifford R. Brown
Clifford R. Brown RCE 22836

COUNTY SURVEYOR'S CERTIFICATE

This map conforms with the requirements of the Subdivision Map Act and Local Ordinance.

Dated 8-23-88

Lawrence J. Brock
Lawrence J. Brock RCE 13528
Plumas County Surveyor

COUNTY TAX COLLECTOR'S CERTIFICATE

I, Barbara J. Coates, Tax Collector of the County of Plumas, State of California, do hereby certify that there are no tax liens against the Parcels, as shown hereon, for unpaid state, county, municipal, or local taxes or special assessments collected as taxes, except taxes or assessments not yet payable. Taxes or assessments which are a lien but not yet payable, are estimated to be in the amount of \$4573.00.

Dated 8-23-88

Barbara J. Coates by Jimmy Schuster
Barbara J. Coates
Plumas County Tax Collector

COUNTY RECORDER'S CERTIFICATE

Filed this 23 day of AUGUST, 1988, at 11:41 a.m. in Book 9 of PARCEL MAPS, at page 114, at the request of the County Engineer.

Fee \$5.00
File No. 1478

ILA DIGGS
County Recorder

by *Bob Cammack*
Deputy

PARCEL MAP

-FOR-

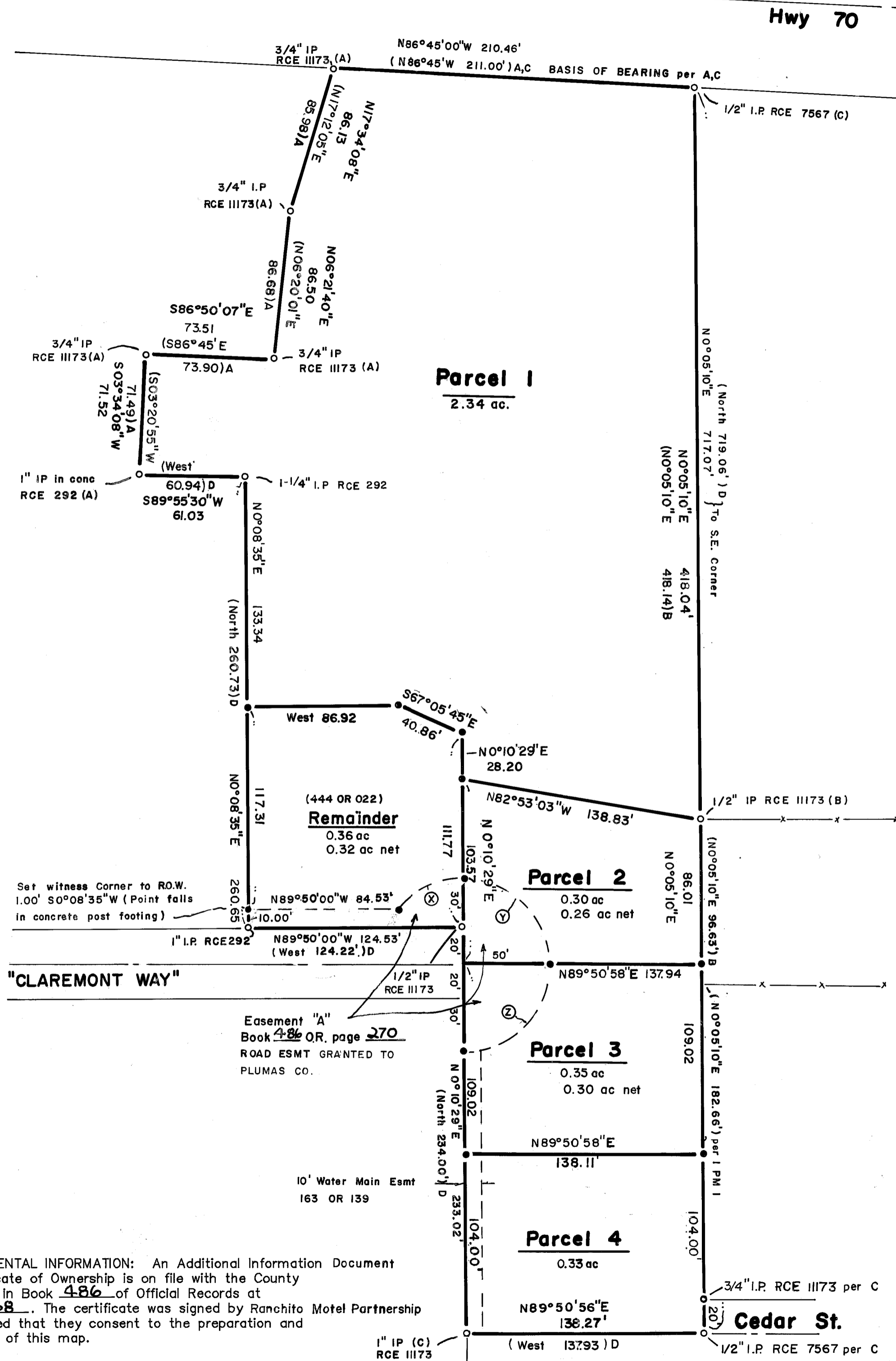
Ranchito Motel, A General Partnership
Rt. 1, Box 359
Quincy, CA 95971

within a portion of T24N, R10E, Section 19
East Quincy, Plumas County, California.

Engineer: Cliff Brown Engineering & Survey
Rt. 1, Box 480B
Quincy, CA 95971 283-3959

June 1988

Sheet 1 of 1



- LEGEND**
- () A Record per 3 RS 22A
 - () B Record per 2 PM 111
 - () C Record per 3 RS 48
 - () D Record per 162 OR 1144
 - o Fd monument noted
 - Set 1/2" Rebar RCE 22836

CURVE DATA R=50'

CURVE	L	Δ
X	46.37'	53°08'17"
Y	78.26'	89°40'29"
Z	78.82'	90°19'31"

SUPPLEMENTAL INFORMATION: An Additional Information Document & Certificate of Ownership is on file with the County Recorder in Book 486 of Official Records at page 268. The certificate was signed by Ranchito Motel Partnership and stated that they consent to the preparation and recording of this map.