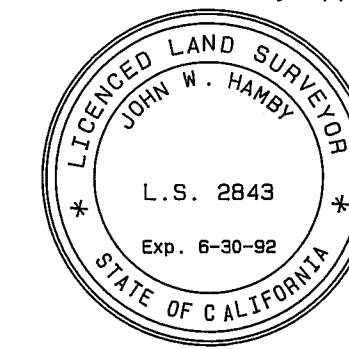


**SURVEYOR'S CERTIFICATE**

This map was prepared by me or under my direction and is based upon a field survey in conformance with the requirements of the Subdivision Map Act and Local Ordinances at the request of Rockne & Jacque Bemis in May 1988. All of the monuments shown hereon are of the character and occupy the positions indicated and are sufficient to enable the survey to be retraced. I hereby state that this parcel map substantially conforms to the approved or conditionally approved tentative map if any.



*John W. Hamby*  
John W. Hamby L.S. 2843

**COUNTY SURVEYOR'S CERTIFICATE**

This map conforms with the requirements of the Subdivision Map Act and Local Ordinances.

DATED: 8/1/88

*Lawrence J. Brock*  
Lawrence J. Brock R.C.E. 13528  
Plumas County Surveyor

**COUNTY RECORDER'S CERTIFICATE**

Filed this 2nd day of August 1988 at 10:55 AM in Book 9 of Parcel Maps at Page 10111 at the request of the County Engineer.

Fee: \$ 700

File No. 829

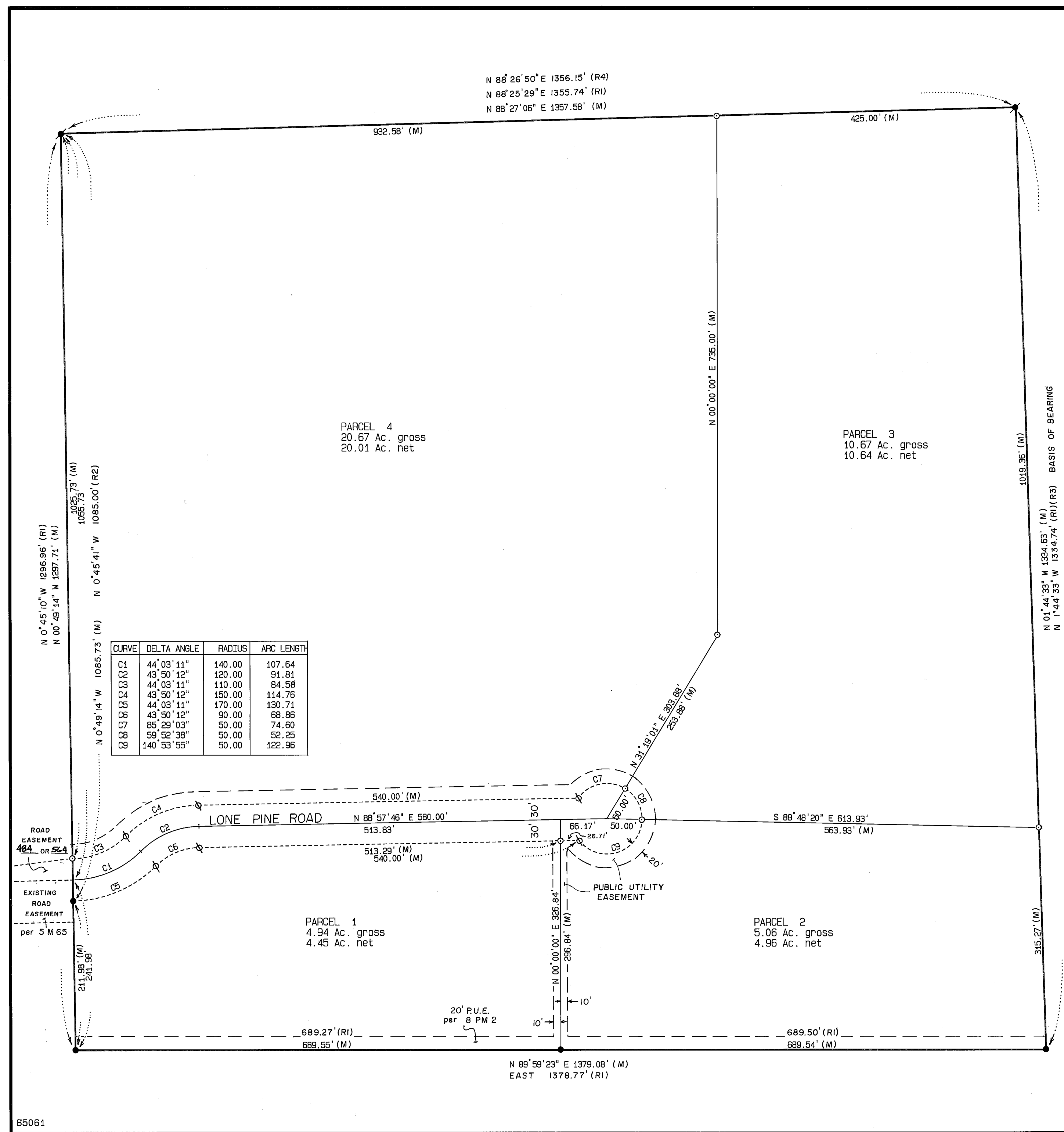
Ila Diggs County Recorder  
By *Dennis Stumpf*  
Deputy

**COUNTY TAX COLLECTOR'S CERTIFICATE**

I Barbara J. Coates, Tax Collector of the County of Plumas, State of California, do hereby certify that there are no tax liens against the parcels, as shown hereon, for unpaid state, county, municipal, or local taxes or special assessments collected as taxes, except taxes or assessments not yet payable. Taxes or assessments which are a lien but not yet payable, are estimated to be in the amount of \$ 741.00.

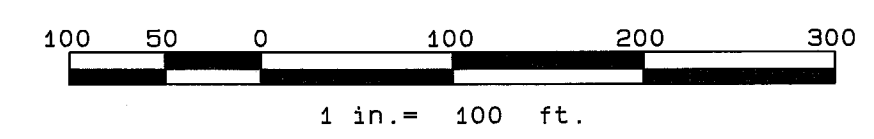
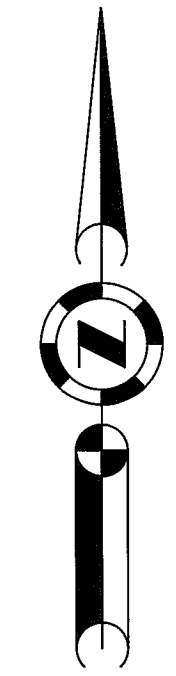
DATED: 8-1-88

*Barbara J. Coates by Ginny Schott*  
Barbara J. Coates  
Plumas County Tax Collector



**BASIS OF BEARING**  
The basis of bearing is East line of Parcel shown as N 1°44'33" W on 8 PM 2, Plumas County Records.

- LEGEND**
- FOUND 1/2" REBAR with Cap LS 3297
  - FOUND 1/2" REBAR with Cap RCE 22836
  - SET 5/8" REBAR with Alum. Cap LS 2843
  - ⊙ SET 5/8" REBAR with Plastic Cap LS 2843
  - (M) MEASURED
  - (R1) RECORD per 8 PM 2
  - (R2) RECORD per 5 M 65
  - (R3) RECORD per 7 PM 26
  - (R4) RECORD per 5 RS 41



**PARCEL MAP**

FOR  
ROCKNE R. & JACQUE L. BEMIS  
A Portion of the SW 1/4 of Section 31  
T. 23 N., R. 17 E., M.D.B. & M.  
Plumas County - California  
Scale 1 in. = 100 ft. June 1988

HAMBY SURVEYING INC.  
PO BOX 1209 Ph. (916) 832-5571  
PORTOLA, CALIFORNIA 96122