

**COUNTY SURVEYOR'S CERTIFICATE**

THIS MAP CONFORMS WITH THE REQUIREMENTS OF THE SUBDIVISION MAP ACT AND LOCAL ORDINANCE.

DATED: 10-1-86 SIGNED: *Lawrence J. Brock*  
LAWRENCE J. BROCK R.C.E. 13528  
PLUMAS COUNTY SURVEYOR

**RECORDER'S CERTIFICATE**

FILED THIS 1st DAY OF OCT., 1986, AT 1:16 P.M. IN BOOK 9 OF PARCEL MAPS AT PAGE 62, AT THE REQUEST OF THE COUNTY ENGINEER.

ILA DIGGS  
COUNTY RECORDER

FEES: 7.00  
FILE NO.: 2853

BY: *Beth Cammack*  
DEPUTY

**ENGINEER'S CERTIFICATE**

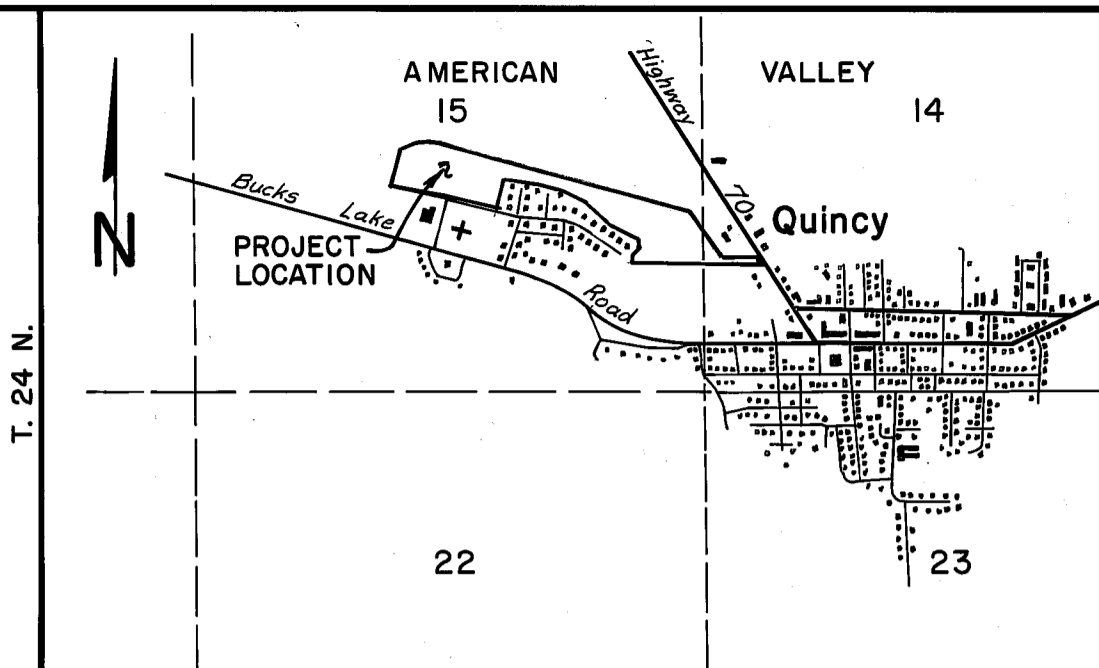
THIS MAP WAS PREPARED BY ME OR UNDER MY DIRECTION AND IS BASED UPON A FIELD SURVEY IN CONFORMANCE WITH THE REQUIREMENTS OF THE SUBDIVISION MAP ACT AND LOCAL ORDINANCE AT THE REQUEST OF WILLIAM N. BARLOW IN DECEMBER, 1985. ALL OF THE MONUMENTS ARE OF THE CHARACTER AND OCCUPY THE POSITIONS INDICATED AND ARE SUFFICIENT TO ENABLE THE SURVEY TO BE RETRACED. I HEREBY STATE THAT THIS PARCEL MAP SUBSTANTIALLY CONFORMS TO THE APPROVED OR CONDITIONALLY APPROVED TENTATIVE MAP, IF ANY.

*Larry A. Fites*  
LARRY A. FITES  
R.C.E. 13225

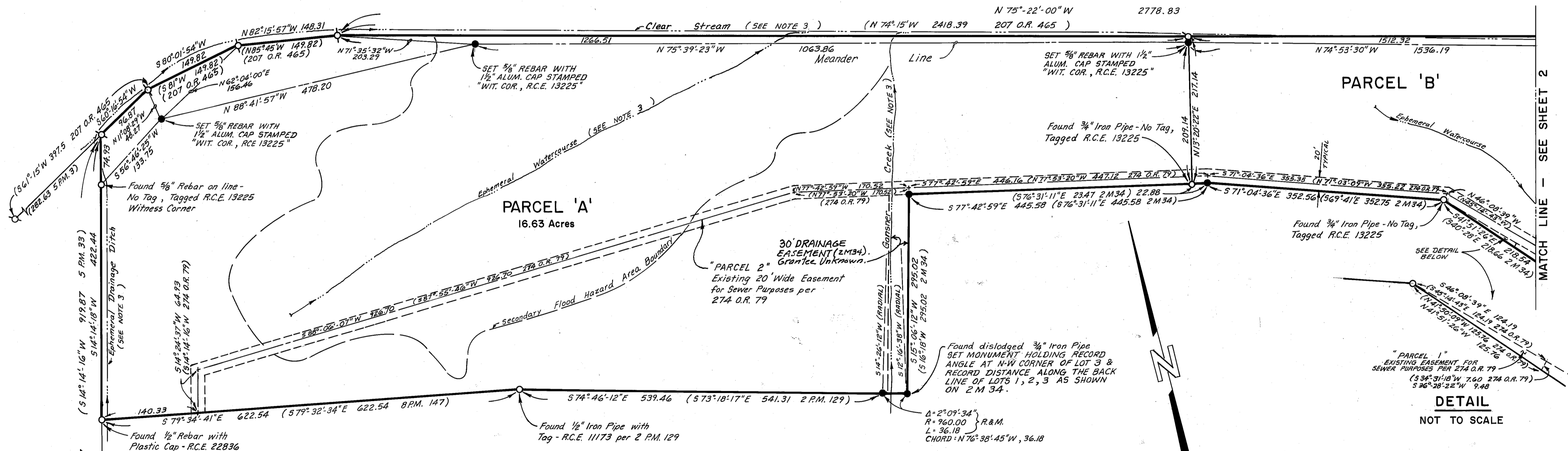
**COUNTY TAX COLLECTOR'S CERTIFICATE**

I, BARBARA J. COKOR, TAX COLLECTOR OF THE COUNTY OF PLUMAS, STATE OF CALIFORNIA, DO HEREBY CERTIFY THAT THERE ARE NO TAX LIENS AGAINST THE PARCELS AS SHOWN HEREON, FOR UNPAID COUNTY, MUNICIPAL, OR LOCAL TAXES OR SPECIAL ASSESSMENTS COLLECTED AS TAXES, EXCEPT TAXES OR ASSESSMENTS NOT YET PAYABLE. TAXES OR ASSESSMENTS WHICH ARE A LIEN BUT NOT YET PAYABLE, ARE ESTIMATED TO BE IN THE AMOUNT OF \$ 2,150.00.

DATED: 9-30-86 *Barbara J. Cokor by: Ginny Schooner*  
BARBARA J. COKOR  
PLUMAS COUNTY TAX COLLECTOR



LOCATION MAP  
SCALE: 1" = 2000'



**LEGEND**

- - FOUND MONUMENT AS NOTED.
- - SET 1/2" REBAR WITH 1/2" ALUM. CAP STAMPED R.C.E. 13225, EXCEPT WHERE NOTED OTHERWISE.
- - COMPUTED CORNER LOCATION
- R.&M. - INDICATES RECORD & MEASURED DATA
- WIT.COR. - INDICATES WITNESS CORNER
- 2 M 34 - INDICATES MAP, BOOK AND PAGE
- 5 P.M. 78 - INDICATES PARCEL MAP, BOOK AND PAGE
- 4 R.S. 119 - INDICATES RECORD OF SURVEY, BOOK AND PAGE
- 213 O.R. 242 - INDICATES OFFICIAL RECORD, VOLUME AND PAGE
- ( ) - INDICATES RECORD DATA AS NOTED

**PARCEL MAP**

FOR:  
WILLIAM N. BARLOW  
BEING A PORTION OF THE SOUTH HALF OF SECTION 15 AND THE SOUTHWEST QUARTER OF SECTION 14, T.24N., R. 9 E., M.D.B.&M. IN PLUMAS COUNTY, CALIFORNIA

BY:  
LARRY FITES ENGINEERING  
P.O. BOX 308  
GRAEAGLE, CALIFORNIA 96103  
R.C.E. 13225

MAY, 1986

SHEET 1 OF 2