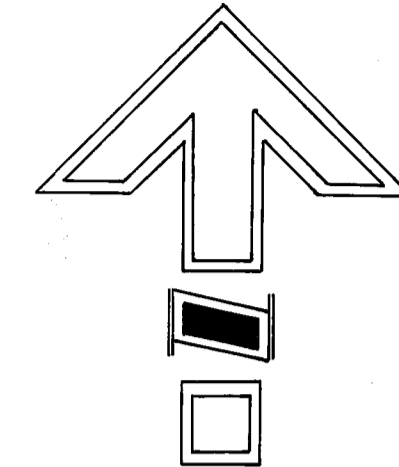


LEGEND

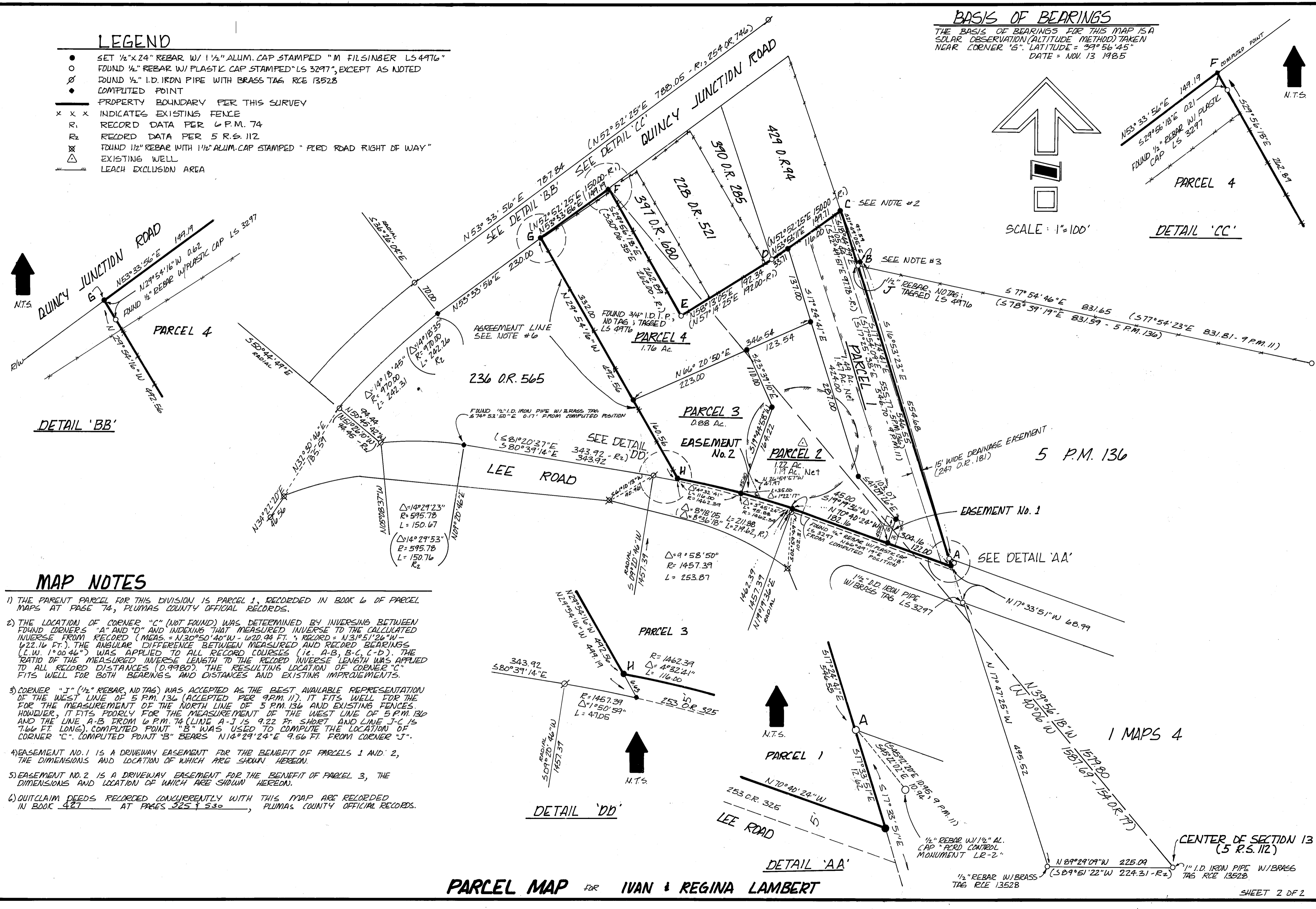
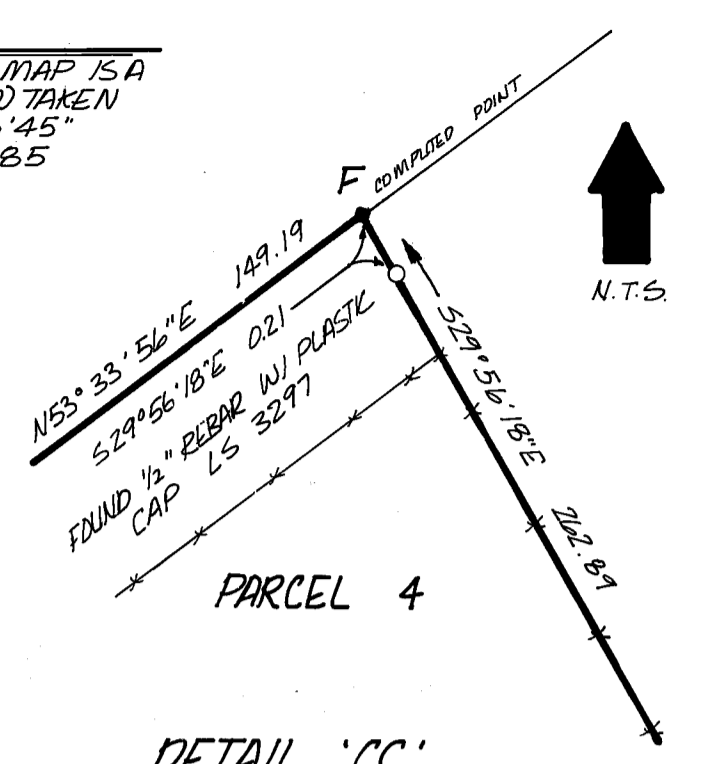
- SET 1/2" X 24" REBAR W/ 1 1/2" ALUM. CAP STAMPED "M FILSINGER LS 4976"
- FOUND 1/2" REBAR W/ PLASTIC CAP STAMPED "LS 3297", EXCEPT AS NOTED
- ∅ FOUND 1/2" I.D. IRON PIPE WITH BRASS TAG RCE 13528
- COMPUTED POINT
- PROPERTY BOUNDARY PER THIS SURVEY
- x x x INDICATES EXISTING FENCE
- R₁ RECORD DATA PER 6 P.M. 74
- R₂ RECORD DATA PER 5 R.S. 112
- ⊗ FOUND 1/2" REBAR WITH 1 1/2" ALUM. CAP STAMPED "PERD ROAD RIGHT OF WAY"
- △ EXISTING WELL
- LEACH EXCLUSION AREA

BASIS OF BEARINGS

THE BASIS OF BEARINGS FOR THIS MAP IS A SOLAR OBSERVATION (ALTITUDE METHOD) TAKEN NEAR CORNER "G". LATITUDE = 39° 56' 45" DATE = NOV. 13 1985



SCALE: 1"=100'



DETAIL 'BB'

SEE DETAIL 'AA'

DETAIL 'DD'

DETAIL 'AA'

MAP NOTES

- 1) THE PARENT PARCEL FOR THIS DIVISION IS PARCEL 1, RECORDED IN BOOK 6 OF PARCEL MAPS AT PAGE 74, PLUMAS COUNTY OFFICIAL RECORDS.
- 2) THE LOCATION OF CORNER "C" (NOT FOUND) WAS DETERMINED BY INVERSING BETWEEN FOUND CORNERS "A" AND "D" AND INDEXING THAT MEASURED INVERSE TO THE CALCULATED INVERSE FROM RECORD (MEAS. = N30°50'40"W - 620.94 FT.; RECORD = N31°51'26"W - 622.16 FT.). THE ANGULAR DIFFERENCE BETWEEN MEASURED AND RECORD BEARINGS (L.W. 1°00'46") WAS APPLIED TO ALL RECORD COURSES (i.e. A-B, B-C, C-D). THE RATIO OF THE MEASURED INVERSE LENGTH TO THE RECORD INVERSE LENGTH WAS APPLIED TO ALL RECORD DISTANCES (0.9980). THE RESULTING LOCATION OF CORNER "C" FITS WELL FOR BOTH BEARINGS AND DISTANCES AND EXISTING IMPROVEMENTS.
- 3) CORNER "J" (1/2" REBAR, NO TAG) WAS ACCEPTED AS THE BEST AVAILABLE REPRESENTATION OF THE WEST LINE OF 5 P.M. 136 (ACCEPTED PER 9 P.M. 11). IT FITS WELL FOR THE MEASUREMENT OF THE NORTH LINE OF 5 P.M. 136 AND EXISTING FENCES. HOWEVER, IT FITS POORLY FOR THE MEASUREMENT OF THE WEST LINE OF 5 P.M. 136 AND THE LINE A-B FROM 6 P.M. 74 (LINE A-J IS 9.22 FT. SHORT AND LINE J-C IS 7.66 FT. LONG). COMPUTED POINT "B" WAS USED TO COMPUTE THE LOCATION OF CORNER "C". COMPUTED POINT "B" BEARS N14°29'24"E 9.66 FT. FROM CORNER "J".
- 4) EASEMENT NO. 1 IS A DRIVEWAY EASEMENT FOR THE BENEFIT OF PARCELS 1 AND 2, THE DIMENSIONS AND LOCATION OF WHICH ARE SHOWN HEREON.
- 5) EASEMENT NO. 2 IS A DRIVEWAY EASEMENT FOR THE BENEFIT OF PARCEL 3, THE DIMENSIONS AND LOCATION OF WHICH ARE SHOWN HEREON.
- 6) QUITCLAIM DEEDS RECORDED CONCURRENTLY WITH THIS MAP ARE RECORDED IN BOOK 427 AT PAGES 325 & 530, PLUMAS COUNTY OFFICIAL RECORDS.

PARCEL MAP FOR IVAN & REGINA LAMBERT

SHEET 2 OF 2