

**NOTES**  
 THE BASIS OF BEARINGS FOR THIS MAP IS THE WESTERLY LINE OF FOURTH STREET SHOWN AS N 22°47' W ON 2 M 43.

**COUNTY TAX COLLECTOR'S STATEMENT**

I, Barbara J Coates, Tax Collector of the County of Plumas, State of California, do hereby certify that there are no tax liens against the parcels shown hereon for unpaid state, county, municipal or local taxes or special assessments collected as taxes, except taxes or assessments not yet payable. Taxes or assessments which are a lien but not yet payable are estimated to be in the amount of \$1771.00.

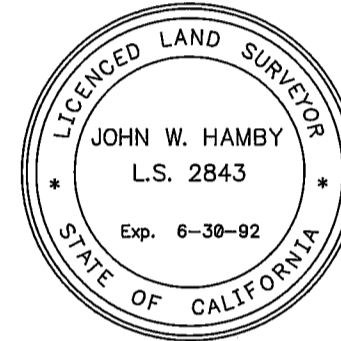
Dated: May 24, 1989  
*Barbara J Coates*  
 Barbara J. Coates  
 Plumas County Tax Collector

**OWNER'S STATEMENT**

A statement of owners consent to the preparation and recording of this map is on file in the Plumas County Recorder's Office in Book 501 of Official Records at page 211.

**SURVEYOR'S STATEMENT**

This map was prepared by me or under my direction and is based upon a field survey in conformance with the requirements of the Subdivision Map Act and local ordinance at the request of Richard L. Joy, Trustee, on oct 24, 1988. All the monuments shown hereon are of the character and occupy the positions indicated and are sufficient to enable the survey to be retraced. I hereby state that this parcel map substantially conforms to the approved or conditionally approved tentative map, if any.



*John W. Hamby*  
 John W. Hamby L.S. 2843

**CITY ENGINEER'S STATEMENT**

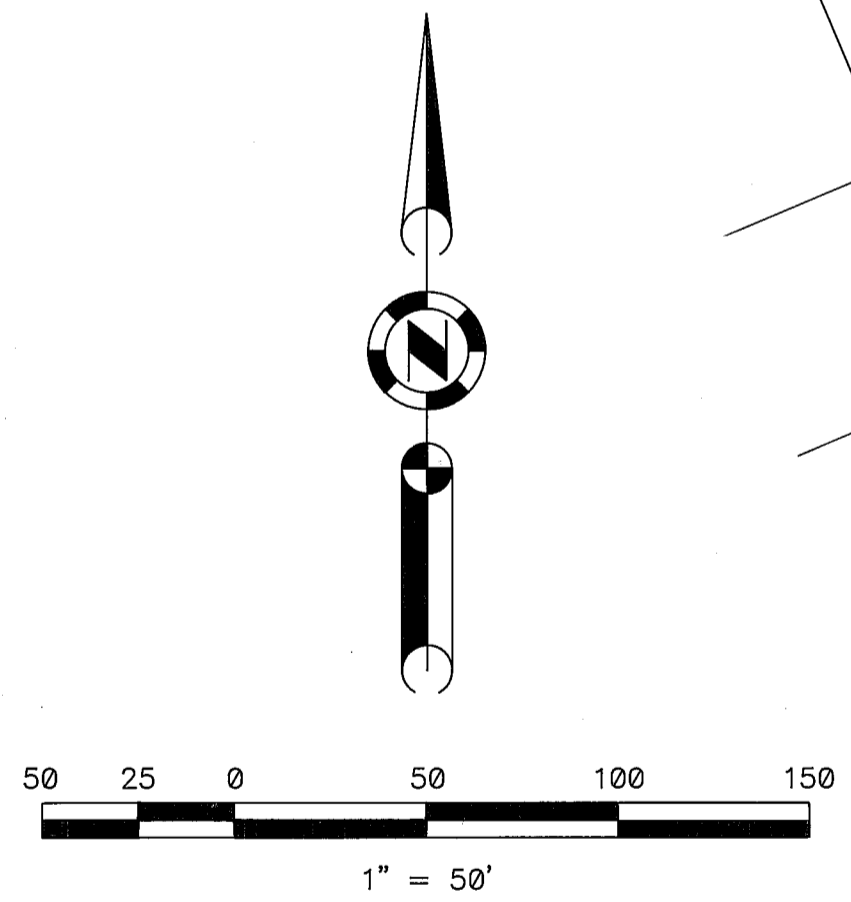
This map conforms with the requirements of The Subdivision Map Act and Local Ordinance.

Dated: April 26, 1989  
*Larry Fites*  
 Larry Fites R.C.E. 13225 Exp. 3-31-93  
 Acting City Engineer

**COUNTY RECORDER'S STATEMENT**

Filed this 24th day of May, 1989 at 9:30 a.m in Book 501 of Parcel Maps, at page 140 at the request of the City Clerk

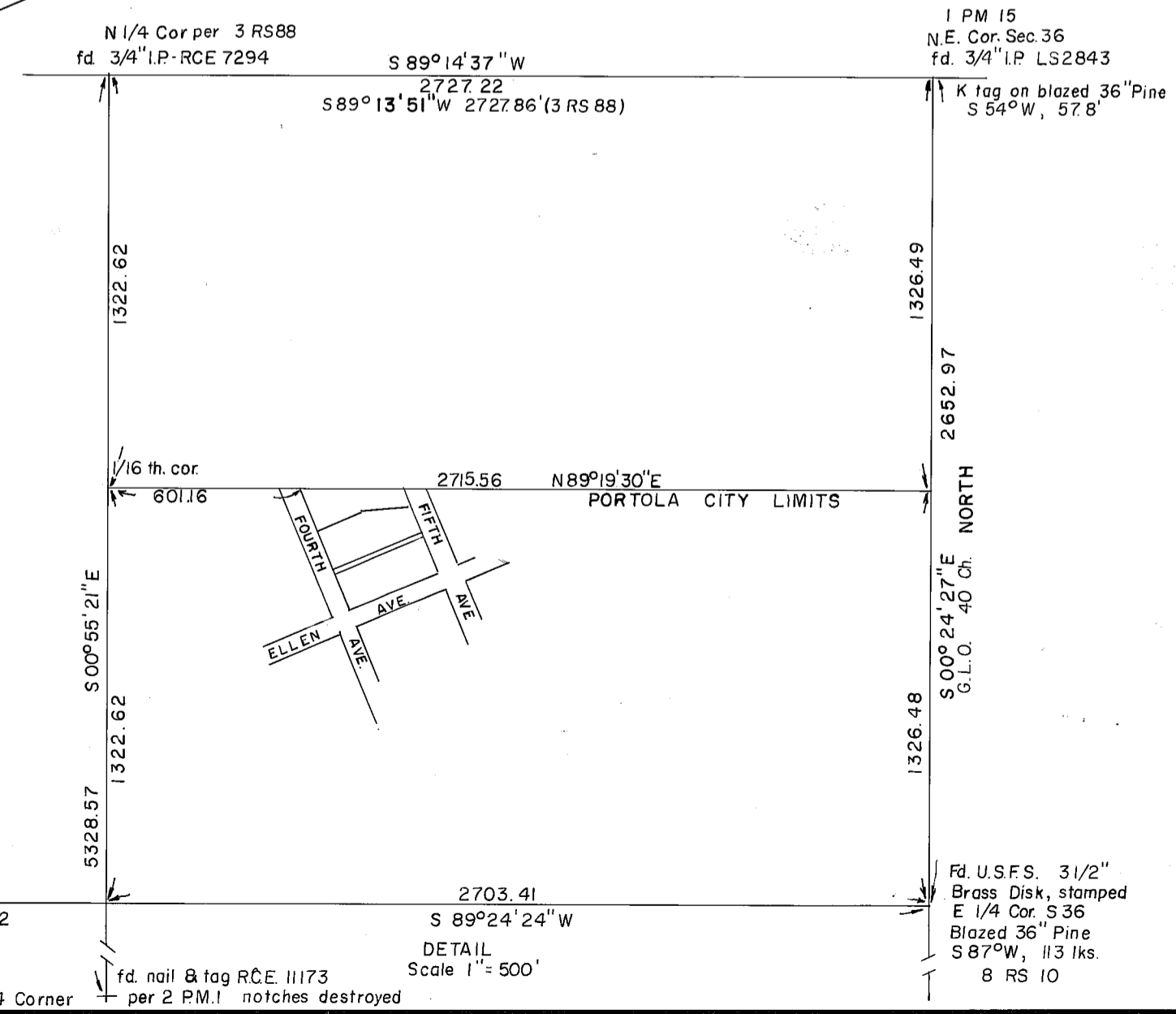
Fee \$5.00  
 File No. 3001  
 Ila Diggs  
 County Recorder  
 By *John Van Gelder*  
 Deputy



**LEGEND**

- FOUND Bolt, set tag L.S.2843
- FOUND 1/2" rebar capped L.S. 2843
- FOUND 5/8" rebar capped L.S.2843
- FOUND 3/4" I.P. tagged L.S.2843
- ⊗ SET 5/8" Rebar & Plastic Cap LS 2843
- (R1) RECORD per BOOK A PAGE 30
- (R2) RECORD per BOOK 2 M PAGE 43

K tag on 16" Pine  
 N 84° E, 80.0'  
 Old stump, B.T.  
 N 66° W, 92.5'



**PARCEL MAP**  
 FOR  
**RICHARD L. JOY, TRUSTEE**

A PORTION OF BLOCK 53 OF THE SECOND NORTH ADDITION TO PORTOLA TOWNSITE IN SEC. 36 T.23 N. R.13E. M.D.B. & M.  
 PORTOLA PLUMAS COUNTY CALIFORNIA  
 SCALE 1" = 50'  
 DECEMBER, 1988

HAMBY SURVEYING, INC.  
 P.O. Box 1209 ph.(916) 832-5571  
 PORTOLA, CA. 96122