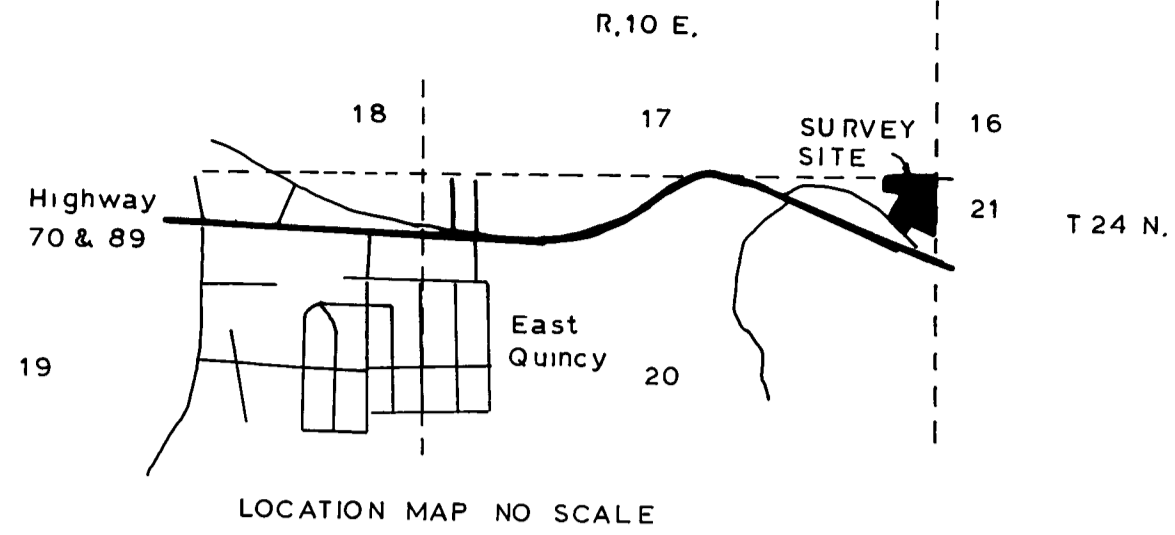


BASIS OF BEARINGS

Bearings are based on the record bearings per 6 RS 90

Record bearing & distance between section corner & 1/4 corner
 (N 88°31'47" W 2678.68' 7PM 41)
 (N 89°29'19" W 2678.26' 5RS114)
 (N 88°46'40" W 2678.66' 6RS 90)



PARCEL MAP FOR WALTER AND EVA CLARK
 IN PORTION OF THE NE 1/4, NE 1/4 OF SECTION 20, T.24 N. R.10 E. M.D.M.
 PLUMAS COUNTY, CALIFORNIA
 JANUARY, 1983

OWNER'S CERTIFICATE

An owner's certificate dated Feb 16, 1983 is recorded concurrently with this map in Book 385 of the Official Record at Page 499 County Recorder.

COUNTY SURVEYOR'S CERTIFICATE

This map conforms with the requirements of the Subdivision Map Act and local ordinance.

Dated 4-11-83

Signed Lawrence J. Brock
 Lawrence J. Brock RCE 135 28
 Plumas County Surveyor

COUNTY RECORDER'S CERTIFICATE

Filed this 11th day of Feb, 1983, at 8:45 AM, in Book 385 of Parcel Maps, at Page 105, at the request of the County Engineer,

Ila Diggs
 County Recorder

Fee \$ 85.00
 File No. 5038

By Rich Cammack
 Deputy

TAX COLLECTOR'S CERTIFICATE

I, Barbara J. Coker, Tax Collector of the County of Plumas, State of California, do hereby certify that there are no tax liens against the parcels, as shown hereon, for unpaid county, municipal, or local taxes or special assessments collected as taxes except taxes or assessments not yet payable. Taxes or assessments which are a lien but not yet payable are estimated to be in the amount of \$ 307.00

Dated April 8, 1983

Signed Barbara J. Coker by: Henry Schober
 Barbara J. Coker
 Plumas County Tax Collector

ENGINEER'S CERTIFICATE

This map was prepared by me or under my direction and is based upon a field survey in conformance with the requirements of the Subdivision Map Act and Local Ordinance at the request of Walter & Eva Clark on January 8, 1983. I hereby certify that the parcel map procedures of the local agency have been complied with and that this parcel map conforms to the approved tentative map and the conditions of approval thereof which were required to be fulfilled prior to the filing of the parcel map.

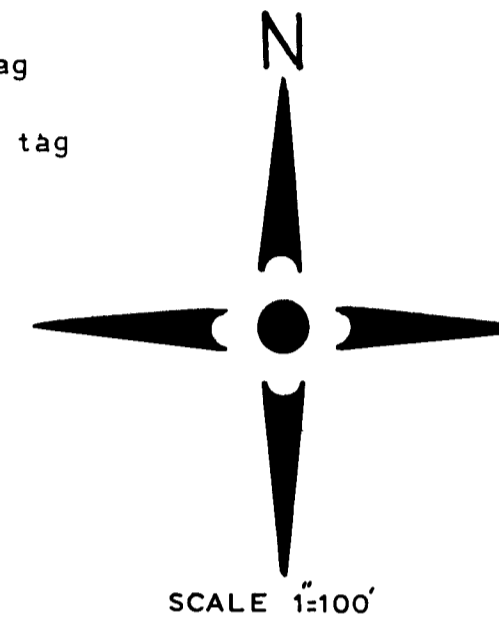
Fox Engineering
 Route 1, Box 407
 Quincy, CA 95971

Signed William D. Fox
 William D. Fox RCE 30095
 All monuments are of the character and occupy the positions indicated. The monuments are sufficient to enable the survey to be retraced.
 Signed William D. Fox
 William D. Fox RCE 30095

SHT1 of 1

1/4 CORNER 1 1/2" I.P. tagged RCE 30095 per 6RS18
 B.T. 12" dia. pine stump w/k tag N 22° W 6.80'

1" I.P. in rock mound tagged LS 2587 per 3RS 70
 BT 18" dia. B.Oak w/k tag N75°E 34.32'
 B.T. 12" dia. B.Oak w/k tag S53 1/2° W 14.19'



LEGEND

- Found 3/4" IP tagged RCE 30095 per 6RS90 unless noted otherwise
- Set 1/2" rebar tagged RCE 30095
- ⊙ Calculated point no monument set
- R & M Record & Measured
- () Record bearing and/or distance

--- Leach exclusion area

NOTE:

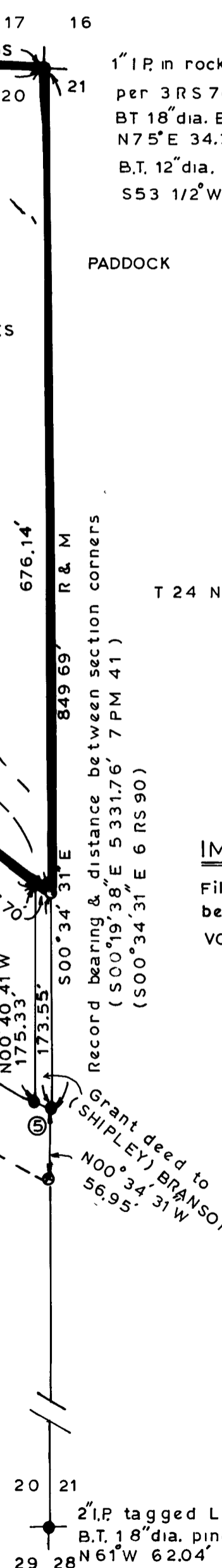
LEACH EXCLUSION AREAS NOT SHOWN ON THIS MAP ARE ALL AREAS WITHIN 50 FEET OF PROPERTY LINES.

CURVE DATA

①	②	③ (31 OR 289)	④ (68 DEEDS 148)
Δ = 8° 36' 22"	Δ = 9° 06' 12"	Δ = 20° 51' 48" (19° 47' 02")	Δ = 22° 51' 12" (21° 22")
R = 1050.00'	R = 1000.00'	R = 950.00'	R = 1000.00'
L = 157.72'	L = 166.83'	L = 345.93' (328.03')	L = 398.87' (373')
C = 157.56'	C = 166.65'	C = 344.03' (326.40')	C = 396.25' (370.67')
N 44° 42' 35" W	N 44° 27' 40" W	N 50° 20' 28" W (N 50° 42' 31" W)	S 51° 20' 10" E (S 51° 30" E)

⑤	⑥
Δ = 00° 23' 14"	Δ = 00° 29' 50"
R = 950.00'	R = 1050.00'
L = 6.42'	L = 9.11'
C = 6.42'	C = 9.11'
N 60° 57' 59" W	N 40° 09' 29" W

R10 E



2" I.P. tagged LS 3297
 B.T. 18" dia. pine stump w/k tag N 61° W 62.04'