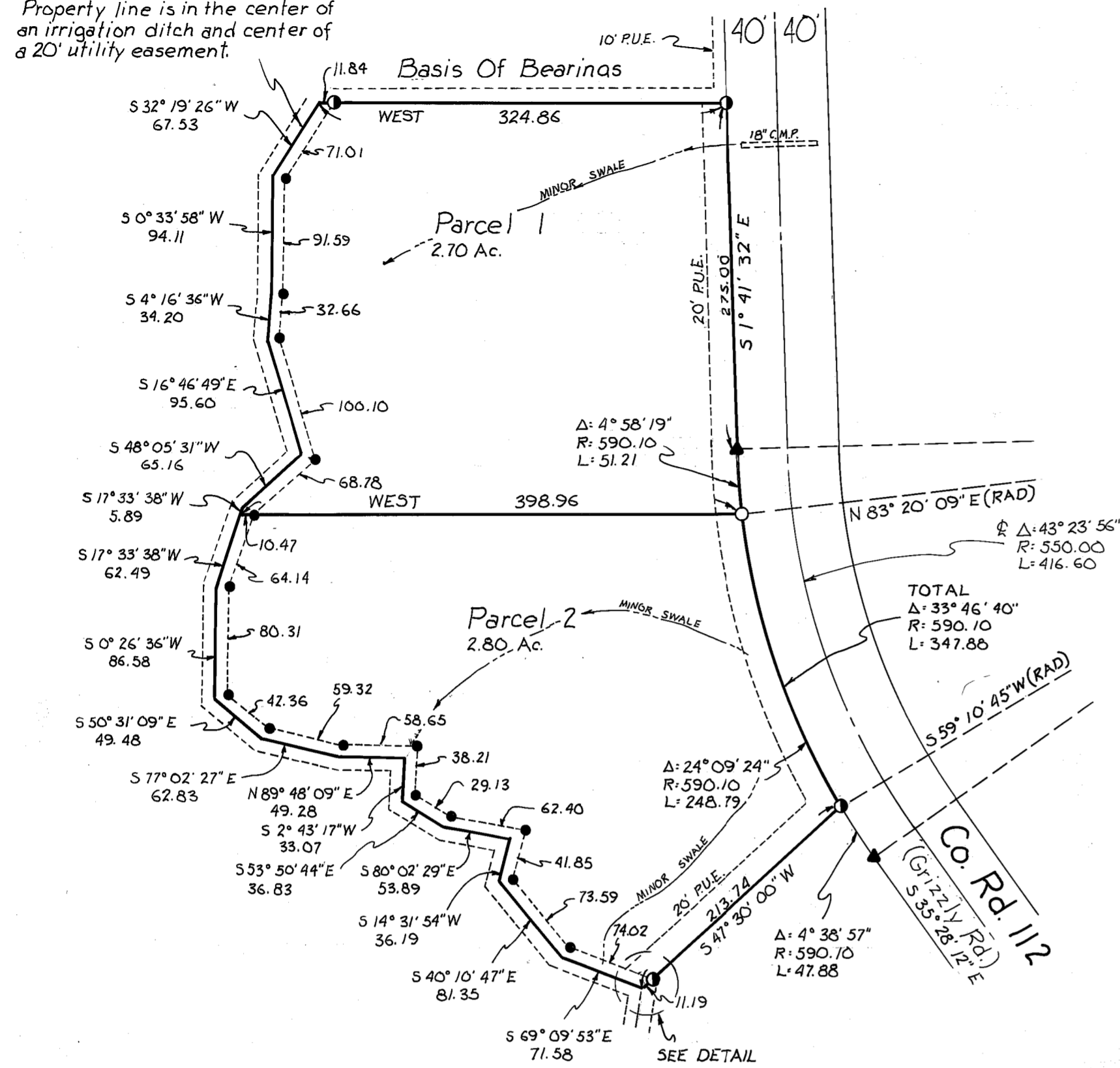


Property line is in the center of an irrigation ditch and center of a 20' utility easement.



Notes:

Leach exclusion areas are all areas within 50' of property lines, within 50' of watercourses, within easements and within 100' of wells.

Certificate of Owner's Consent to preparation and recording of this map is on file in the County Recorders Office in 356 O.R. 1578

The Basis Of Bearings is the North line of Parcel 2 on the Parcel Map filed in 7 P.M. 107 shown as bearing West 324.86

This Parcel Map shows a division of Parcel 2 of 7 P.M. 107

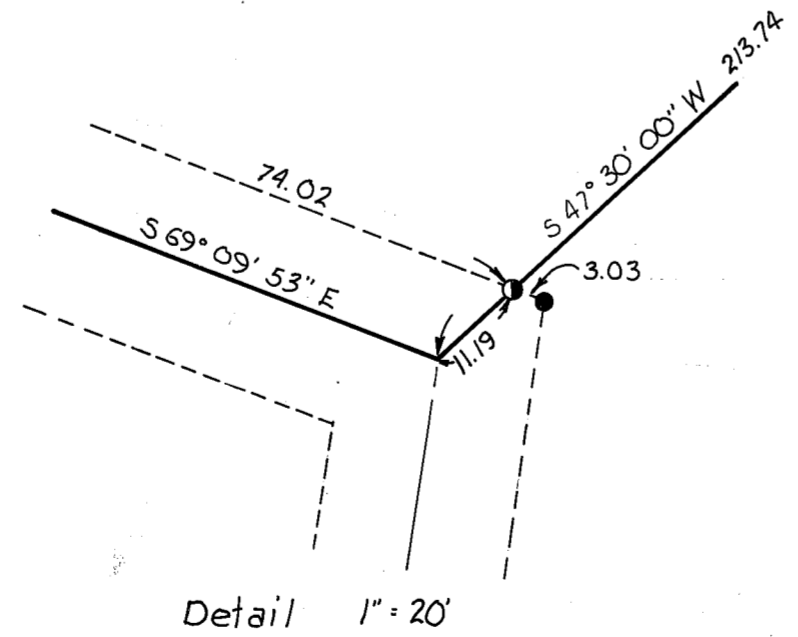
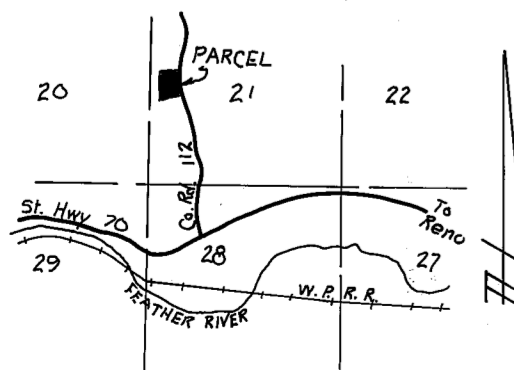


Scale: 1"=100'

Legend:

- Set 1/2" rebar with aluminum cap - LS 2843
  - Found 1/2" rebar with alum. cap - LS 2843
  - Found 1/2" rebar with plastic cap - LS 2843
  - ▲ Found 1/2" I.P. - RCE 13528
- P.U.E.: Public Utility Easement

Location Map - N.T.S.



Surveyor's Certificate

This map was prepared by me or under my direction and is based upon a field survey in conformance with the requirements of the Subdivision Map Act and local ordinances at the request of Ronald Reuben on Feb. 23, 1981.

John W. Hamby LS 2843

County Surveyor's Certificate

This map conforms with the requirements of the Subdivision Map Act and local ordinances. Dated: 8/27/81

Lawrence J. Brock RCE 13528 Plumas County Surveyor

County Tax Collector's Certificate

I, Barbara J. Cokor, Tax Collector of the County of Plumas, State of California, do hereby certify that there are no tax liens against the parcels as shown hereon for unpaid county, local or municipal taxes or special assessments collected as taxes, except taxes or assessments not yet payable.

Dated: 8-21-81 Barbara J. Cokor Plumas County Tax Collector

County Recorder's Certificate

Filed this 28th day of August, 1981, at 9:02 a.m. in Book 8 of Parcel Maps at Page 33 at the request of the County Engineer. Fee \$5.00 File No. 1896

Ila Diggs Plumas County Recorder

by Isabelle Andreous Deputy

Parcel Map for Ronald Reuben A portion of the W. 1/2 of Sec. 21, T. 23 N., R. 14 E., M.D.B.&M. Plumas County California

By: Hamby Surveying, Inc. - LS 2843 PO. Box 842, Ph. (916) 832 5571 Portola, California, 96122 May, 1981