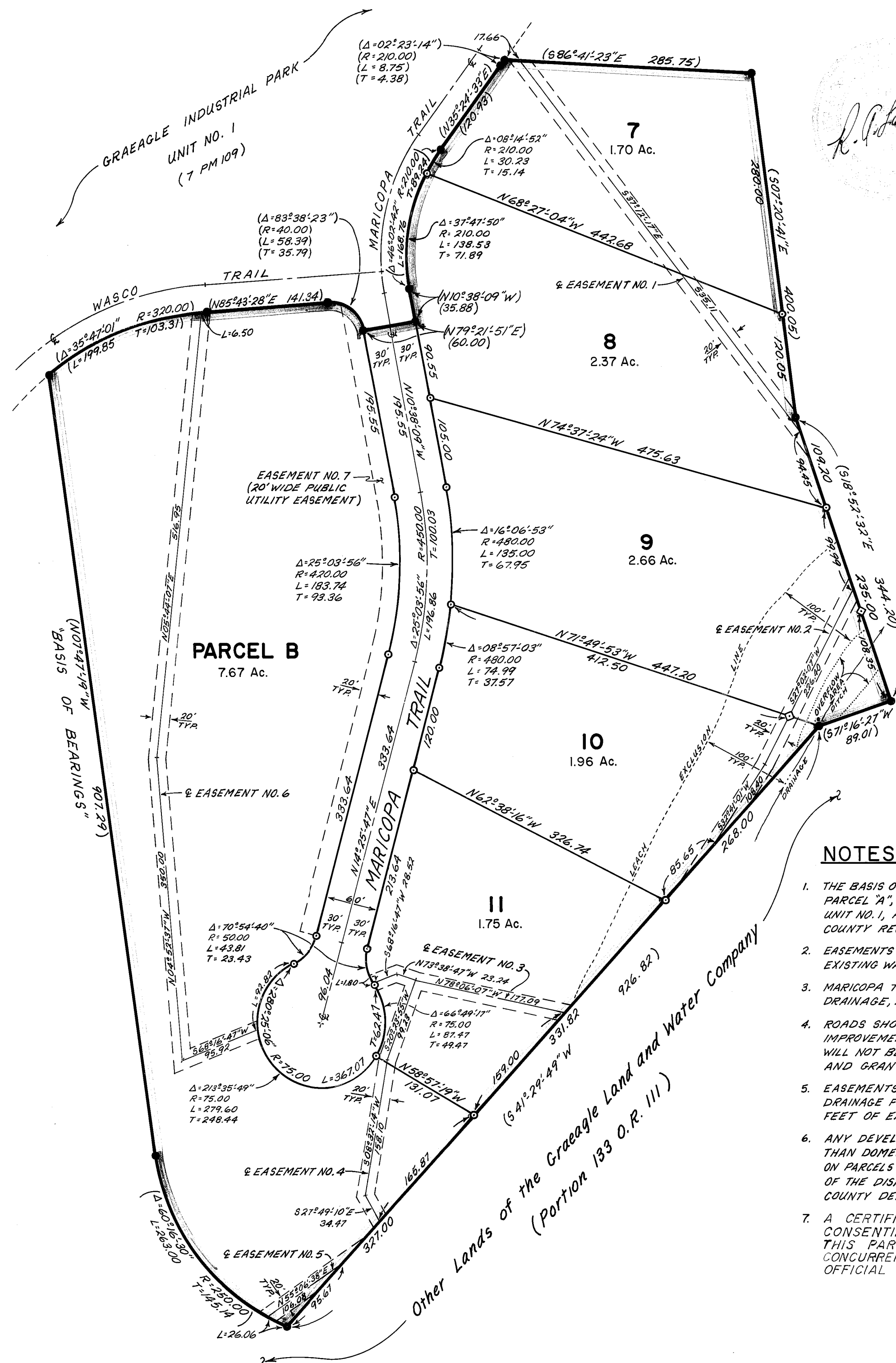


SCALE 1"=100'

**ENGINEER'S CERTIFICATE**

THIS MAP WAS PREPARED BY ME OR UNDER MY DIRECTION AND IS BASED UPON A FIELD SURVEY IN CONFORMANCE WITH THE REQUIREMENTS OF THE SUBDIVISION MAP ACT AND LOCAL ORDINANCE AT THE REQUEST OF THE GRAEAGLE LAND AND WATER COMPANY IN AUGUST, 1980. I HEREBY STATE THAT THIS PARCEL MAP SUBSTANTIALLY CONFORMS TO THE APPROVED OR CONDITIONALLY APPROVED TENTATIVE MAP, IF ANY.

*Richard A. Lundy*  
 RICHARD A. LUNDY  
 R.C.E. 15265

**COUNTY SURVEYOR'S CERTIFICATE**

THIS MAP CONFORMS WITH THE REQUIREMENTS OF THE SUBDIVISION MAP ACT AND LOCAL ORDINANCE.

DATED: Feb 19, 1981 SIGNED *Lawrence J. Brock*  
 LAWRENCE J. BROCK R.C.E. 13528  
 PLUMAS COUNTY SURVEYOR

**COUNTY TAX COLLECTOR'S CERTIFICATE**

I, TAX COLLECTOR OF THE COUNTY OF PLUMAS, STATE OF CALIFORNIA, DO HEREBY CERTIFY THAT THERE ARE NO TAX LIENS AGAINST THE PARCELS, AS SHOWN HEREON, FOR UNPAID COUNTY, MUNICIPAL, OR LOCAL TAXES OR SPECIAL ASSESSMENTS COLLECTED AS TAXES, EXCEPT TAXES OR ASSESSMENTS NOT YET PAYABLE. TAXES OR ASSESSMENTS WHICH ARE A LIEN BUT NOT YET PAYABLE, ARE ESTIMATED TO BE IN THE AMOUNT OF \$ NONE.

DATED: 2-18-81 SIGNED *Lois Alexander*  
 LOIS ALEXANDER  
 PLUMAS COUNTY TAX COLLECTOR

**COUNTY RECORDER'S CERTIFICATE**

FILED THIS 19th DAY OF February, 1981, AT 12:48 P.M. IN BOOK 7 OF PARCEL MAPS AT PAGE 136, AT THE REQUEST OF THE COUNTY ENGINEER.

FEE: \$ 5.00  
 FILE NO.:  
 ILA DIGGS  
 COUNTY RECORDER  
 BY: *Frances Nicol*  
 DEPUTY

**NOTES**

1. THE BASIS OF BEARINGS FOR THIS MAP IS THE MOST WESTERLY LINE OF PARCEL "A", GIVEN AS N07°47'19"W, WITHIN GRAEAGLE INDUSTRIAL PARK, UNIT NO. 1, AS SHOWN IN BOOK 7 OF PARCEL MAPS AT PAGE 109, PLUMAS COUNTY RECORDS.
2. EASEMENTS NO. 1, 2, 3, 4, 5 & 6 ARE 20' WIDE EASEMENTS ALONG THE EXISTING WATER LINES FOR MAINTENANCE AND OPERATION THEREOF.
3. MARICOPA TRAIL IS AN EASEMENT FOR PRIVATE ROAD ACCESS, DRAINAGE, PUBLIC UTILITY, AND FUTURE PUBLIC ROAD PURPOSES.
4. ROADS SHOWN HEREON ARE PRIVATE EASEMENTS NOT SUBJECT TO IMPROVEMENT OR MAINTENANCE BY PLUMAS COUNTY. SUCH EASEMENTS WILL NOT BECOME FULLY EFFECTIVE UNLESS AND UNTIL RESERVATIONS AND GRANTS ARE INCLUDED IN THE RESPECTIVE DEEDS.
5. EASEMENTS FOR THE INSTALLATION AND MAINTENANCE OF UTILITIES AND DRAINAGE FACILITIES LIE ALONG THE REAR 10 FEET AND THE SIDE 10 FEET OF EACH PARCEL ON THIS MAP.
6. ANY DEVELOPMENT DISCHARGING INDUSTRIAL WASTES OR WASTES OTHER THAN DOMESTIC WASTEWATER ON THIS PROPERTY, AND ALL DEVELOPMENT ON PARCELS 7 AND 8 SHALL BE SUBJECT TO AN ENGINEERED SPECIAL DESIGN OF THE DISPOSAL SYSTEM WHICH MUST BE APPROVED BY THE PLUMAS COUNTY DEPARTMENT OF ENVIRONMENTAL SANITATION.
7. A CERTIFICATE, SIGNED AND ACKNOWLEDGED BY THE OWNERS, CONSENTING TO THE PREPARATION AND RECORDATION OF THIS PARCEL MAP, DATED DECEMBER 18, 1980, IS RECORDED CONCURRENTLY WITH THIS PARCEL MAP, IN VOLUME 345 OF OFFICIAL RECORDS AT PAGE 152.

**LEGEND**

- - SET 1/4" REBAR W/ PLASTIC CAP STAMPED R.C.E. 15265.
- - FOUND 1/2" REBAR W/ PLASTIC CAP STAMPED R.C.E. 15265.
- ◇ - WITNESS MONUMENT, SET 1/4" REBAR W/ PLASTIC CAP STAMPED R.C.E. 15265.
- ( ) - RECORD & MEASURED DATA PER 7PM109, UNLESS OTHERWISE INDICATED.
- 1PM234 - PARCEL MAP - BOOK AND PAGE.
- 1230.R.456 - OFFICIAL RECORDS - VOLUME AND PAGE.

**PARCEL MAP**  
 OF  
**GRAEAGLE INDUSTRIAL PARK**  
 UNIT NO. 2  
 (A DIVISION OF PARCEL "A" OF UNIT NO. 1)  
 WITHIN SECTION 15, T.22N., R.12E., M.D.B. & M.  
 IN PLUMAS COUNTY, CALIFORNIA  
 FOR  
**GRAEAGLE LAND AND WATER COMPANY**

LUNDY ENGINEERING, INCORPORATED  
 P.O. BOX 308  
 GRAEAGLE, CALIFORNIA  
 R.C.E. 15265

DECEMBER, 1980

SHEET 1 OF 1