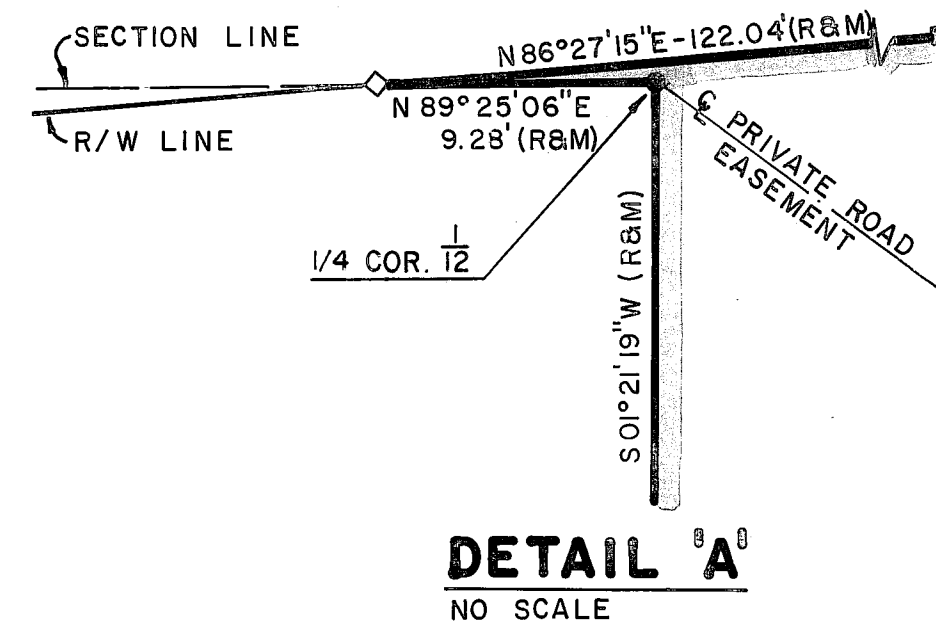
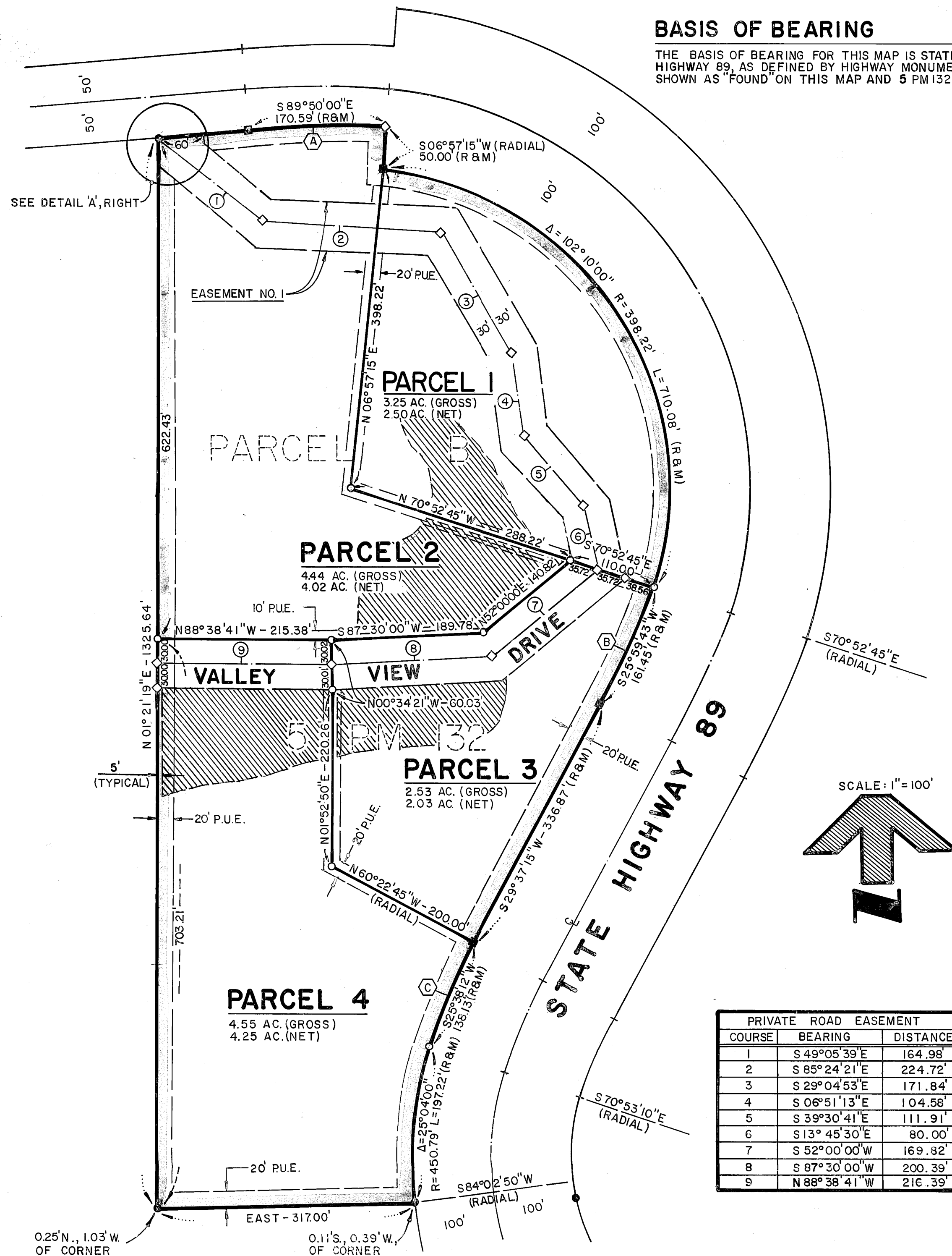


BASIS OF BEARING

THE BASIS OF BEARING FOR THIS MAP IS STATE HIGHWAY 89, AS DEFINED BY HIGHWAY MONUMENTS SHOWN AS FOUND ON THIS MAP AND 5 PM 132.

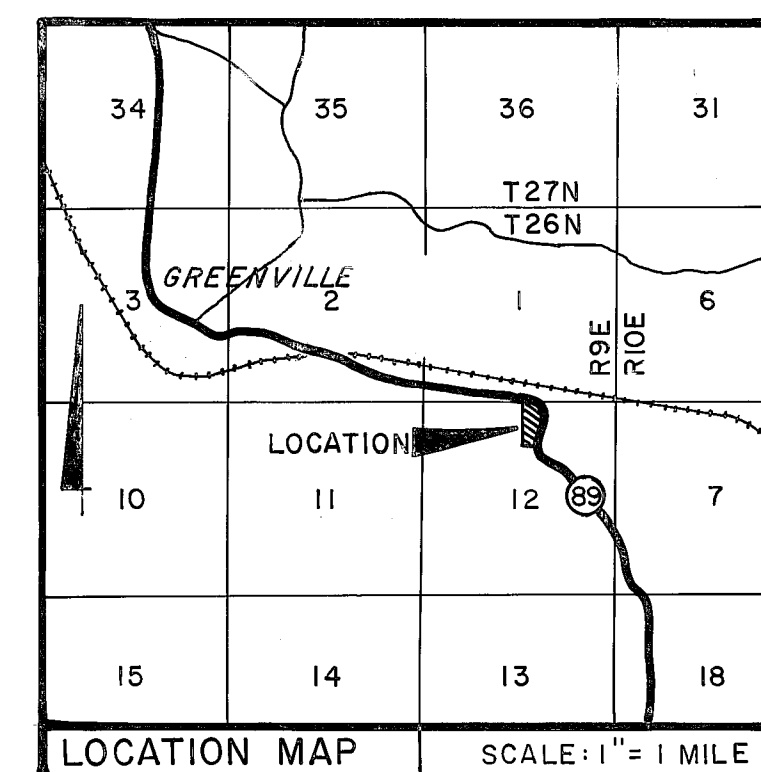


NOTES

- CERTIFICATE OF OWNER'S CONSENT TO THE PREPARATION AND RECORDATION OF THIS MAP, DATED 10-2-79, IS ON FILE IN THE OFFICE OF THE COUNTY ENGINEER.
- THOSE PORTIONS OF THE HIGHWAY RIGHT-OF-WAY MARKED 'A', 'B' & 'C' ARE SPIRAL CURVES, AND ARE SHOWN AS SUCH; THE DATA SHOWN, HOWEVER, REPRESENTS THE CHORD OF THE SPIRAL CURVE, AS SHOWN ON 5 PM 132.
- THE BASIS OF BEARING FOR THIS MAP IS STATE HIGHWAY 89, AS DEFINED BY THE HIGHWAY MONUMENTS SHOWN HEREON AND ON 5 PM 132.
- EASEMENT NO. 1: IS A 60' WIDE PRIVATE ROADWAY AND UTILITY EASEMENT FOR THE BENEFIT OF PARCELS 1-4, AND THE LANDS TO THE WEST. THIS ALIGNMENT REPRESENTS THE SURVEYED LOCATION OF THAT CERTAIN EASEMENT GRANTED IN VOLUME 299 OF OFFICIAL RECORDS AT PAGE 603.

LEGEND

- SET 1/2" REBAR W/ALUMINUM CAP STAMPED RCE 26870
- ⊙ FOUND 3/4" I.P. MARKED LS 3202 PER 5 PM 132
- ⊠ FOUND 6" x 6" CONCRETE HIGHWAY MONUMENT
- ◇ CALCULATED POINT, NOTHING SET
- (R&M) RECORD AND MEASURED (RECORD PER 5 PM 132)
- ▨ DESIGNATED LEACH AREA
- P.U.E. PUBLIC UTILITY EASEMENT



ENGINEER'S CERTIFICATE

THIS MAP WAS PREPARED BY ME OR UNDER MY DIRECTION AND IS BASED UPON A FIELD SURVEY IN CONFORMANCE WITH THE REQUIREMENTS OF THE SUBDIVISION MAP ACT AND LOCAL ORDINANCE AT THE REQUEST OF ALFRED DAUGHERTY IN AUG. 1979. I HEREBY STATE THAT THE PARCEL MAP PROCEDURES OF THE LOCAL AGENCY HAVE BEEN COMPLIED WITH AND THAT THIS PARCEL MAP CONFORMS TO THE APPROVED TENTATIVE MAP AND THE CONDITIONS OF APPROVAL THEREOF WHICH WERE REQUIRED TO BE FULFILLED PRIOR TO THE FILING OF THE PARCEL MAP.

Joseph G. Brandt
JOSEPH G. BRANDT R.C.E. 26870

COUNTY SURVEYOR'S CERTIFICATE

THIS MAP CONFORMS WITH THE REQUIREMENTS OF THE SUBDIVISION MAP ACT AND LOCAL ORDINANCE.

June 6
DATED
Lawrence J. Brock
LAWRENCE J. BROCK RCE 13528
PLUMAS COUNTY SURVEYOR

COUNTY TAX COLLECTOR'S CERTIFICATE

I, LOIS ALEXANDER, TAX COLLECTOR OF THE COUNTY OF PLUMAS, STATE OF CALIFORNIA, DO HEREBY CERTIFY THAT THERE ARE NO TAX LIENS AGAINST THE PARCELS, AS SHOWN HEREON, FOR UNPAID COUNTY, MUNICIPAL, OR LOCAL TAXES OR SPECIAL ASSESSMENTS COLLECTED AS TAXES, EXCEPT TAXES OR ASSESSMENTS NOT YET PAYABLE. TAXES OR ASSESSMENTS WHICH ARE A LIEN BUT NOT YET PAYABLE ARE ESTIMATED TO BE IN THE AMOUNT OF \$ 335.00.

DATED 6/6/80
Lois Alexander
LOIS ALEXANDER
PLUMAS COUNTY TAX COLLECTOR
by: Lew Sprague, Deputy

COUNTY RECORDER'S CERTIFICATE

FILED THIS 6th DAY OF June, 1980, AT 9:25 A.M. IN BOOK 7 OF PARCEL MAPS AT PAGE 59, AT THE REQUEST OF THE COUNTY ENGINEER.

ILA DIGGS
COUNTY RECORDER

FEE \$ 5.00
FILE NO.

BY Isabelle Anderson
DEPUTY

PARCEL MAP

OF
A SUBDIVISION OF FOUR PARCELS
WITHIN

THE NE 1/4 OF SEC. 12, T26N, R9E, M.D.M.
PLUMAS COUNTY, CALIFORNIA

FOR

ALFRED DAUGHERTY
ET UX

brandt & associates
CIVIL ENGINEERS~SURVEYORS

75 COURT STREET
QUINCY, CALIFORNIA 95971

P.O. BOX 749
916-283-1111

W.O. No. 790309

DATE: SEPT., 1979
SHEET 1 OF 1