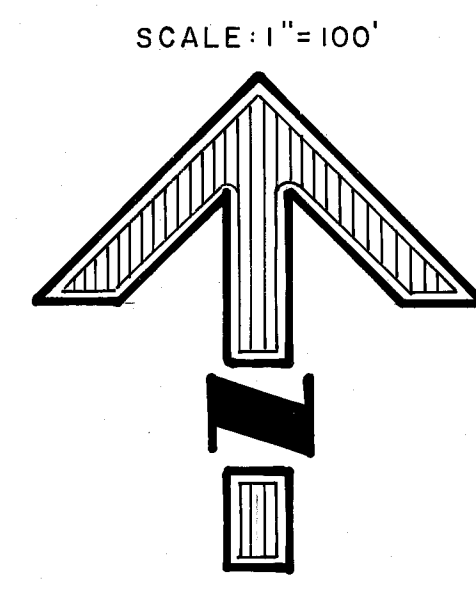
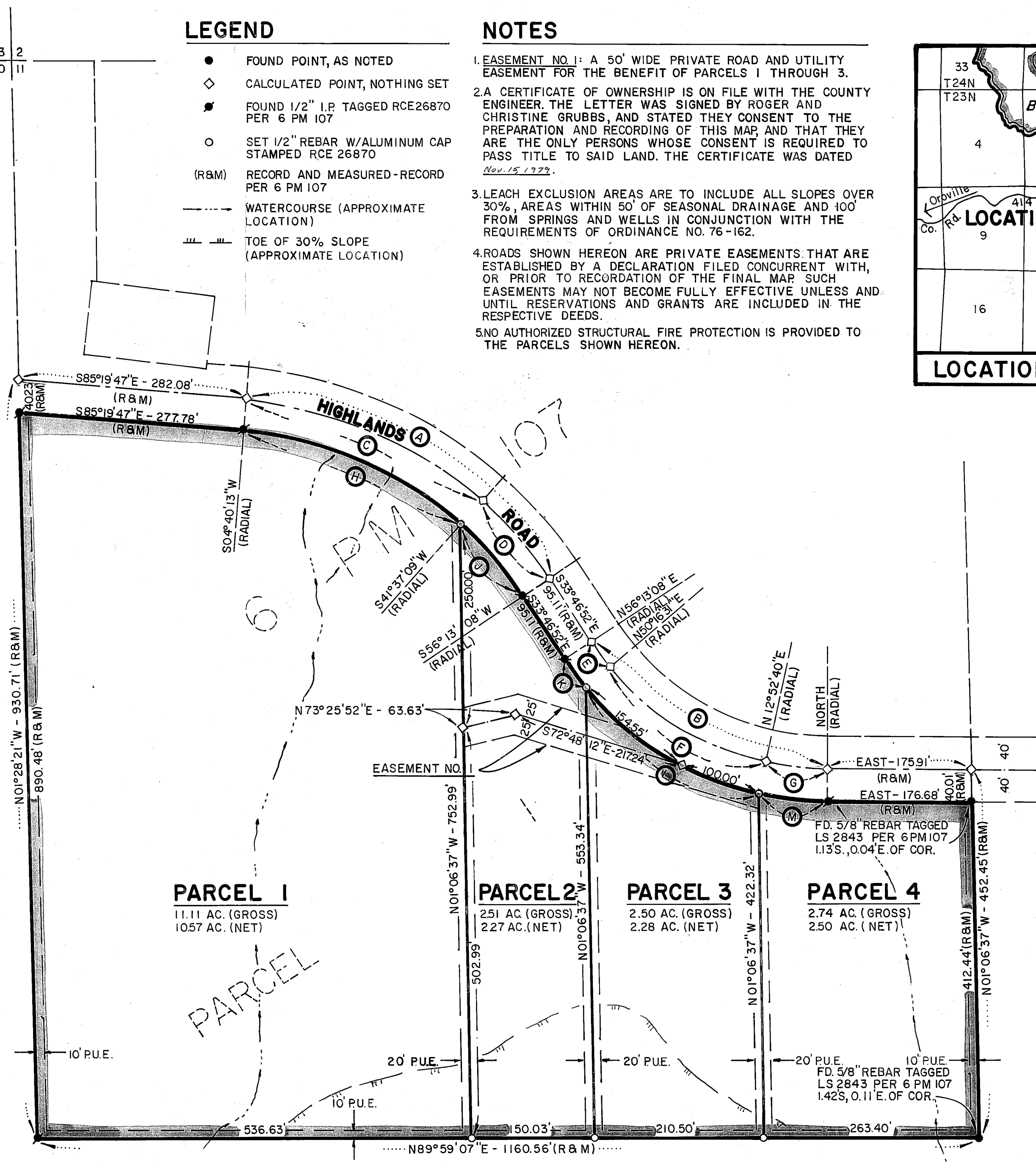
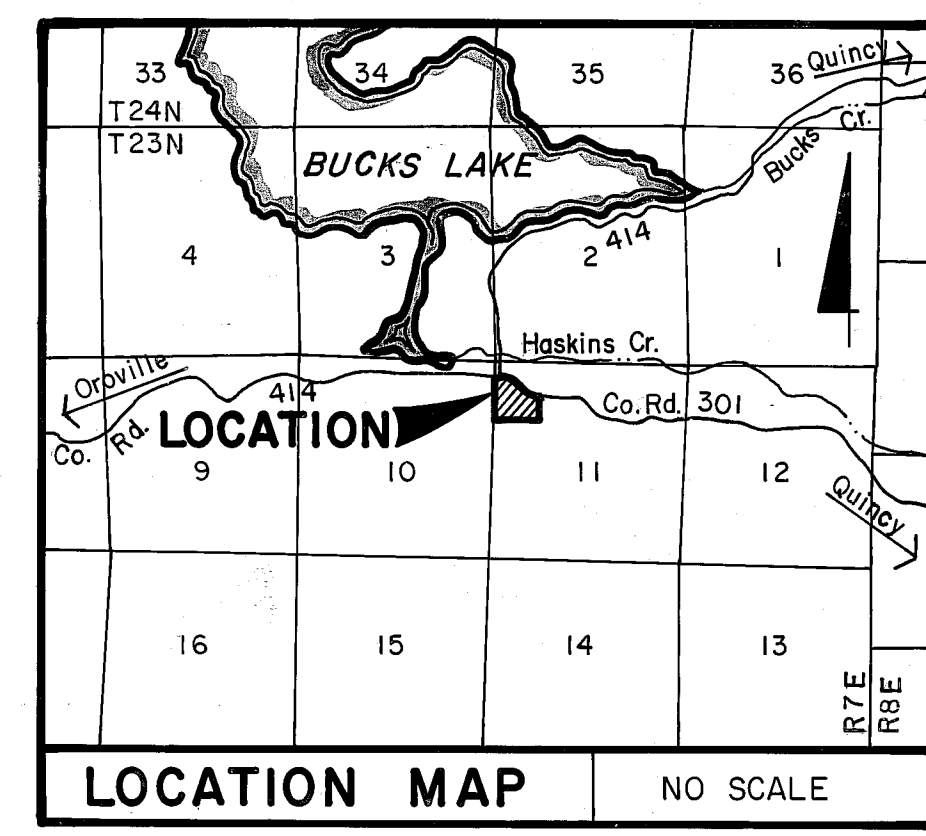


LEGEND

- FOUND POINT, AS NOTED
- ◇ CALCULATED POINT, NOTHING SET
- FOUND 1/2" I.P. TAGGED RCE26870 PER 6 PM 107
- SET 1/2" REBAR W/ALUMINUM CAP STAMPED RCE 26870
- (R&M) RECORD AND MEASURED-RECORD PER 6 PM 107
- WATERCOURSE (APPROXIMATE LOCATION)
- /// TOE OF 30% SLOPE (APPROXIMATE LOCATION)

NOTES

1. EASEMENT NO. 1: A 50' WIDE PRIVATE ROAD AND UTILITY EASEMENT FOR THE BENEFIT OF PARCELS 1 THROUGH 3.
2. A CERTIFICATE OF OWNERSHIP IS ON FILE WITH THE COUNTY ENGINEER. THE LETTER WAS SIGNED BY ROGER AND CHRISTINE GRUBBS, AND STATED THEY CONSENT TO THE PREPARATION AND RECORDING OF THIS MAP, AND THAT THEY ARE THE ONLY PERSONS WHOSE CONSENT IS REQUIRED TO PASS TITLE TO SAID LAND. THE CERTIFICATE WAS DATED *Nov. 15, 1977.*
3. LEACH EXCLUSION AREAS ARE TO INCLUDE ALL SLOPES OVER 30%, AREAS WITHIN 50' OF SEASONAL DRAINAGE AND 100' FROM SPRINGS AND WELLS IN CONJUNCTION WITH THE REQUIREMENTS OF ORDINANCE NO. 76-162.
4. ROADS SHOWN HEREON ARE PRIVATE EASEMENTS THAT ARE ESTABLISHED BY A DECLARATION FILED CONCURRENT WITH, OR PRIOR TO RECORDATION OF THE FINAL MAP SUCH EASEMENTS MAY NOT BECOME FULLY EFFECTIVE UNLESS AND UNTIL RESERVATIONS AND GRANTS ARE INCLUDED IN THE RESPECTIVE DEEDS.
5. NO AUTHORIZED STRUCTURAL FIRE PROTECTION IS PROVIDED TO THE PARCELS SHOWN HEREON.



CURVE DATA			
	DELTA	RADIUS	LENGTH
(A)	51° 32' 55"	500.00'	449.85' †
(B)	56° 13' 08"	350.00'	343.42' †
(C)	36° 56' 56"	500.00'	322.44'
(D)	14° 35' 59"	500.00'	127.41'
(E)	05° 56' 37"	350.00'	36.31'
(F)	37° 23' 51"	350.00'	228.45'
(G)	12° 52' 40"	350.00'	78.66'
(H)	36° 56' 56"	460.00'	296.64'
(J)	14° 35' 59"	460.00'	117.21'
(K)	05° 56' 37"	390.00'	40.46'
(L)	37° 23' 51"	390.00'	254.55'
(M)	12° 52' 40"	390.00'	87.66'

BASIS OF BEARING
 THE BASIS OF BEARING FOR THIS MAP IS THE WEST LINE OF SECTION 11, T 23N, R7E, MDM, AS SHOWN ON 6 PM 107.

ENGINEER'S CERTIFICATE

THIS MAP WAS PREPARED BY ME OR UNDER MY DIRECTION AND IS BASED UPON A FIELD SURVEY IN CONFORMANCE WITH THE REQUIREMENTS OF THE SUBDIVISION MAP ACT AND LOCAL ORDINANCE AT THE REQUEST OF ROGER GRUBBS IN OCT. 1979. I HEREBY STATE THAT THE PARCEL MAP PROCEDURES OF THE LOCAL AGENCY HAVE BEEN COMPLIED WITH AND THAT THIS PARCEL MAP CONFORMS TO THE APPROVED TENTATIVE MAP AND THE CONDITIONS OF APPROVAL THEREOF WHICH WERE REQUIRED TO BE FULFILLED PRIOR TO THE FILING OF THE PARCEL MAP.

Joseph G. Brandt
 JOSEPH G. BRANDT R.C.E. 26870

COUNTY SURVEYOR'S CERTIFICATE

THIS MAP CONFORMS WITH THE REQUIREMENTS OF THE SUBDIVISION MAP ACT AND LOCAL ORDINANCE.

Lawrence J. Brock
 DATED 6/3/80 LAWRENCE J. BROCK RCE 13 528
 PLUMAS COUNTY SURVEYOR

COUNTY TAX COLLECTOR'S CERTIFICATE

I, LOIS ALEXANDER, TAX COLLECTOR OF THE COUNTY OF PLUMAS, STATE OF CALIFORNIA, DO HEREBY CERTIFY THAT THERE ARE NO TAX LIENS AGAINST THE PARCELS, AS SHOWN HEREON, FOR UNPAID COUNTY, MUNICIPAL, OR LOCAL TAXES OR SPECIAL ASSESSMENTS COLLECTED AS TAXES, EXCEPT TAXES OR ASSESSMENTS NOT YET PAYABLE. TAXES OR ASSESSMENTS WHICH ARE A LIEN BUT NOT YET PAYABLE ARE ESTIMATED TO BE IN THE AMOUNT OF \$ 449.00.

DATED 6/3/80 *Lois Alexander*
 LOIS ALEXANDER
 PLUMAS COUNTY TAX COLLECTOR

COUNTY RECORDER'S CERTIFICATE

FILED THIS 3rd DAY OF June, 1980, AT 12:30 P.M. IN BOOK 7 OF PARCEL MAPS AT PAGE 57, AT THE REQUEST OF THE COUNTY ENGINEER.

ILA DIGGS
 COUNTY RECORDER
 BY *Francis Nicol*
 DEPUTY
 FEE \$ 6.00
 FILE NO. 9806

PARCEL MAP

OF
 A SUBDIVISION OF 4 PARCELS
 WITHIN
 THE NW 1/4 OF SEC. 11, T23N, R7E MDM
 PLUMAS COUNTY, CALIFORNIA

FOR
ROGER GRUBBS ET UX

brandt & associates
 CIVIL ENGINEERS ~ SURVEYORS

75 COURT STREET QUINCY, CALIFORNIA 95971 P.O. BOX 749 916-283-1111
 W.O. No. 790307 DATE: NOV., 1979 SHEET 1 OF 1