

COUNTY TAX COLLECTOR'S CERTIFICATE

I, LOIS ALEXANDER, TAX COLLECTOR OF THE COUNTY OF PLUMAS, STATE OF CALIFORNIA, DO HEREBY CERTIFY THAT THERE ARE NO TAX LIENS AGAINST THE PARCELS, AS SHOWN HEREON, FOR UNPAID COUNTY, MUNICIPAL, OR LOCAL TAXES OR SPECIAL ASSESSMENTS COLLECTED AS TAXES, EXCEPT TAXES OR ASSESSMENTS NOT YET PAYABLE. TAXES OR ASSESSMENTS WHICH ARE A LIEN BUT NOT YET PAYABLE, ARE ESTIMATED TO BE IN THE AMOUNT OF \$1,415.00

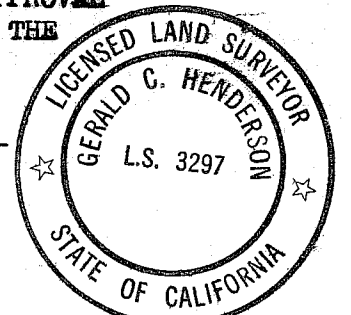
DATED: 10/2/79

Lois Alexander
 PLUMAS COUNTY TAX COLLECTOR
 by: Terri Sprague Deputy

SURVEYOR'S CERTIFICATE

THIS MAP WAS PREPARED BY ME OR UNDER MY DIRECTION AND WAS COMPILED FROM RECORD DATA AND IS BASED UPON A FIELD SURVEY IN CONFORMANCE WITH THE REQUIREMENTS OF THE SUBDIVISION MAP ACT AND LOCAL ORDINANCE AT THE REQUEST OF A. NASCIMENTO IN SEPTEMBER 1979. I HEREBY STATE THAT THE PARCEL MAP PROCEDURES OF THE LOCAL AGENCY HAVE BEEN COMPLIED WITH AND THAT THIS PARCEL MAP CONFORMS TO THE APPROVED TENTATIVE MAP AND THE CONDITIONS OF APPROVAL THEREOF WHICH WERE REQUIRED TO BE FULFILLED PRIOR TO THE FILING OF THE PARCEL MAP.

Gerald C. Henderson
 GERALD C. HENDERSON LS 3297



COUNTY SURVEYOR'S CERTIFICATE

THIS MAP CONFORMS WITH THE REQUIREMENTS OF THE SUBDIVISION MAP ACT AND LOCAL ORDINANCE.

DATED: October 12, 1979

Lawrence J. Brock
 by: R. Tom Hunter RCE 30515
 LAWRENCE J. BROCK RCE 13528
 PLUMAS COUNTY SURVEYOR

RECORDER'S CERTIFICATE

FILED THIS 12th DAY OF October 1979, AT 2:50 P.M. IN BOOK 7 OF PARCEL MAPS, AT PAGE 21, AT THE REQUEST OF THE COUNTY ENGINEER.

FEE \$5.00

FILE NO. 3568

ILA DIGGS
 COUNTY RECORDER

by: Frances Nicol
 DEPUTY

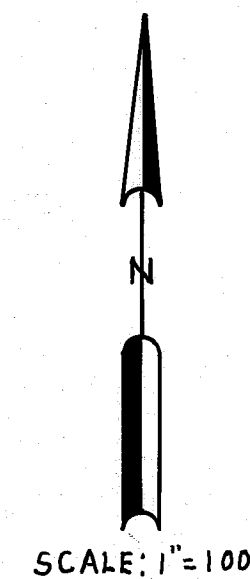
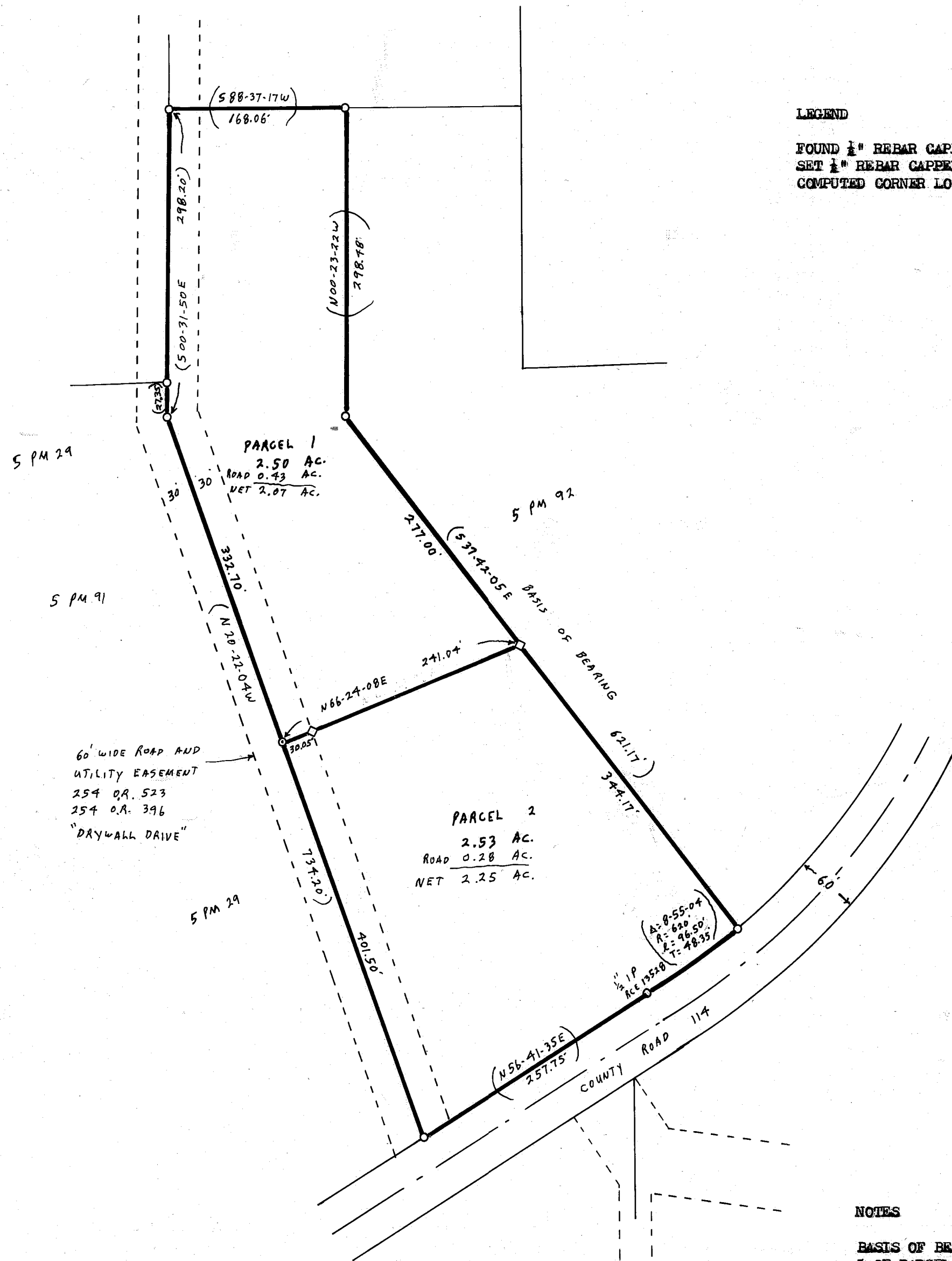
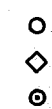
PARCEL MAP

OF A SUBDIVISION INTO TWO PARTS
 FOR
 ABE & SALLY NASCIMENTO SEPTEMBER 1979
 PORTION OF SECTION 2, T. 22N., R. 13E., MEM
 PLUMAS COUNTY, CALIFORNIA

GERALD C. HENDERSON
 CIVIL ENGINEER-LAND SURVEYOR
 P. O. BOX 1377
 PORTOLA, CALIFORNIA

LEGEND

FOUND 1/2" REBAR CAPPED RCE 11173 EXCEPT AS NOTED
 SET 1/2" REBAR CAPPED LS 3297
 COMPUTED CORNER LOCATION



NOTES

BASIS OF BEARING IS TAKEN FROM THAT CERTAIN MAP FILED IN BOOK 5 OF PARCEL MAPS AT PAGE 92, PLUMAS COUNTY RECORDS.

CERTIFICATE OF OWNER'S CONSENT TO PREPARATION AND RECORDING OF THIS MAP IS ON FILE IN THE COUNTY ENGINEER'S OFFICE DATED SEPT. 17, 1979

ROADS SHOWN HEREON ARE PRIVATE EASEMENTS THAT ARE ESTABLISHED BY A DECLARATION FILED CONCURRENT WITH, OR PRIOR TO RECORDATION OF THE FINAL MAP. SUCH EASEMENTS MAY NOT BECOME FULLY EFFECTIVE UNLESS AND UNTIL RESERVATIONS AND GRANTS ARE INCLUDED IN THE RESPECTIVE DEEDS.

LEACH EXCLUSION AREAS ARE ALL AREAS WITHIN 100' OF WELLS AND WITHIN 50' OF PROPERTY LINES.