

NOTES

BASIS OF BEARING IS TAKEN FROM THAT CERTAIN MAP FILED IN BOOK 5 OF PARCEL MAPS AT PAGE 48, PLUMAS COUNTY RECORDS.

CERTIFICATE OF OWNER'S CONSENT TO PREPARATION AND RECORDING OF THIS MAP IS ON FILE IN THE COUNTY ENGINEER'S OFFICE, DATED

ROADS SHOWN HEREON ARE PRIVATE EASEMENTS THAT ARE ESTABLISHED BY A DECLARATION FILED CONCURRENT WITH, OR PRIOR TO REGORDATION OF THE FINAL MAP. SUCH EASEMENTS MAY NOT BECOME FULLY EFFECTIVE UNLESS AND UNTIL RESERVATIONS AND GRANTS ARE INCLUDED IN THE RESPECTIVE DEEDS.

LEACH EXCLUSION AREAS ARE ALL AREAS WITHIN EASEMENTS, WITHIN 50' OF WATERCOURSES AND PROPERTY LINES, AND FOR ALL SLOPES OF 30% OR GREATER.

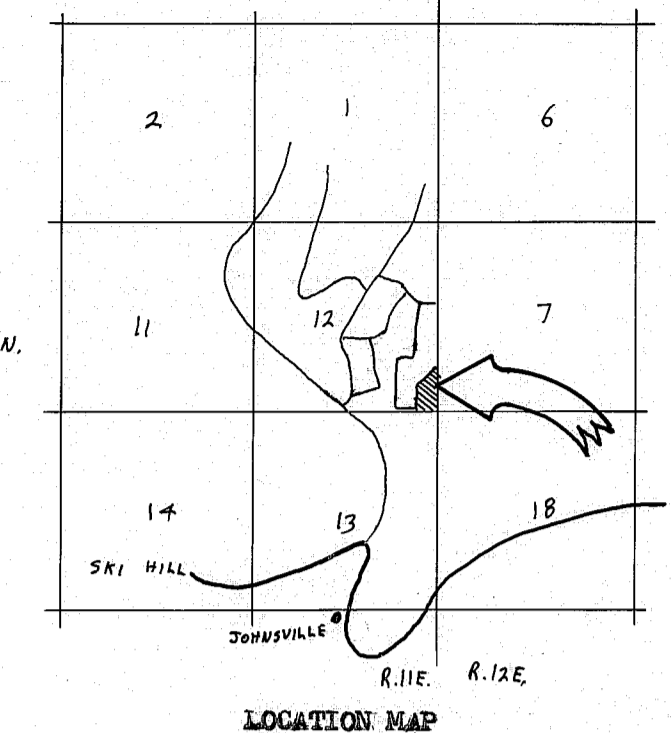
COUNTY TAX COLLECTOR'S CERTIFICATE

I, TAX COLLECTOR OF THE COUNTY OF PLUMAS, STATE OF CALIFORNIA, DO HEREBY CERTIFY THAT THERE ARE NO TAX LIENS AGAINST THE PARCELS, AS SHOWN HEREON, FOR UNPAID COUNTY, MUNICIPAL, OR LOCAL TAXES OR SPECIAL ASSESSMENTS COLLECTED AS TAXES, EXCEPT TAXES OR ASSESSMENTS NOT YET PAYABLE. TAXES OR ASSESSMENTS WHICH ARE A LIEN BUT NOT YET PAYABLE, ARE ESTIMATED TO BE IN THE AMOUNT OF \$280.00

8/22/79

Lois Alexander
LOIS ALEXANDER
PLUMAS COUNTY TAX COLLECTOR
by: Jenni Sprague, deputy

T. 22N.



SURVEYOR'S CERTIFICATE

THIS MAP WAS PREPARED BY ME OR UNDER MY DIRECTION AND WAS COMPILED FROM RECORD DATA AND IS BASED UPON A FIELD SURVEY IN CONFORMANCE WITH THE REQUIREMENTS OF THE SUBDIVISION MAP ACT AT THE REQUEST OF SIERRA TIMBER RESOURCES IN SEPTEMBER 1978. I HEREBY STATE THAT THE PARCEL MAP PROCEDURES OF THE LOCAL AGENCY HAVE BEEN COMPLIED WITH AND THAT THIS PARCEL MAP CONFORMS TO THE APPROVED TENTATIVE MAP AND THE CONDITIONS OF APPROVAL THEREOF WHICH WERE REQUIRED TO BE FULFILLED PRIOR TO THE FILING OF THE PARCEL MAP.

Gerald C. Henderson
GERALD C. HENDERSON LS 3297

COUNTY SURVEYOR'S CERTIFICATE

THIS MAP CONFORMS WITH THE REQUIREMENTS OF THE SUBDIVISION MAP ACT AND LOCAL ORDINANCE.

DATED: 8-21-79

Laurence J. Brock
PLUMAS COUNTY SURVEYOR

RECORDER'S CERTIFICATE

FILED THIS 28th DAY OF August, 1979, AT 11:46 AM. IN BOOK 7 OF PARCEL MAPS, AT PAGE 10, AT THE REQUEST OF THE COUNTY ENGINEER.

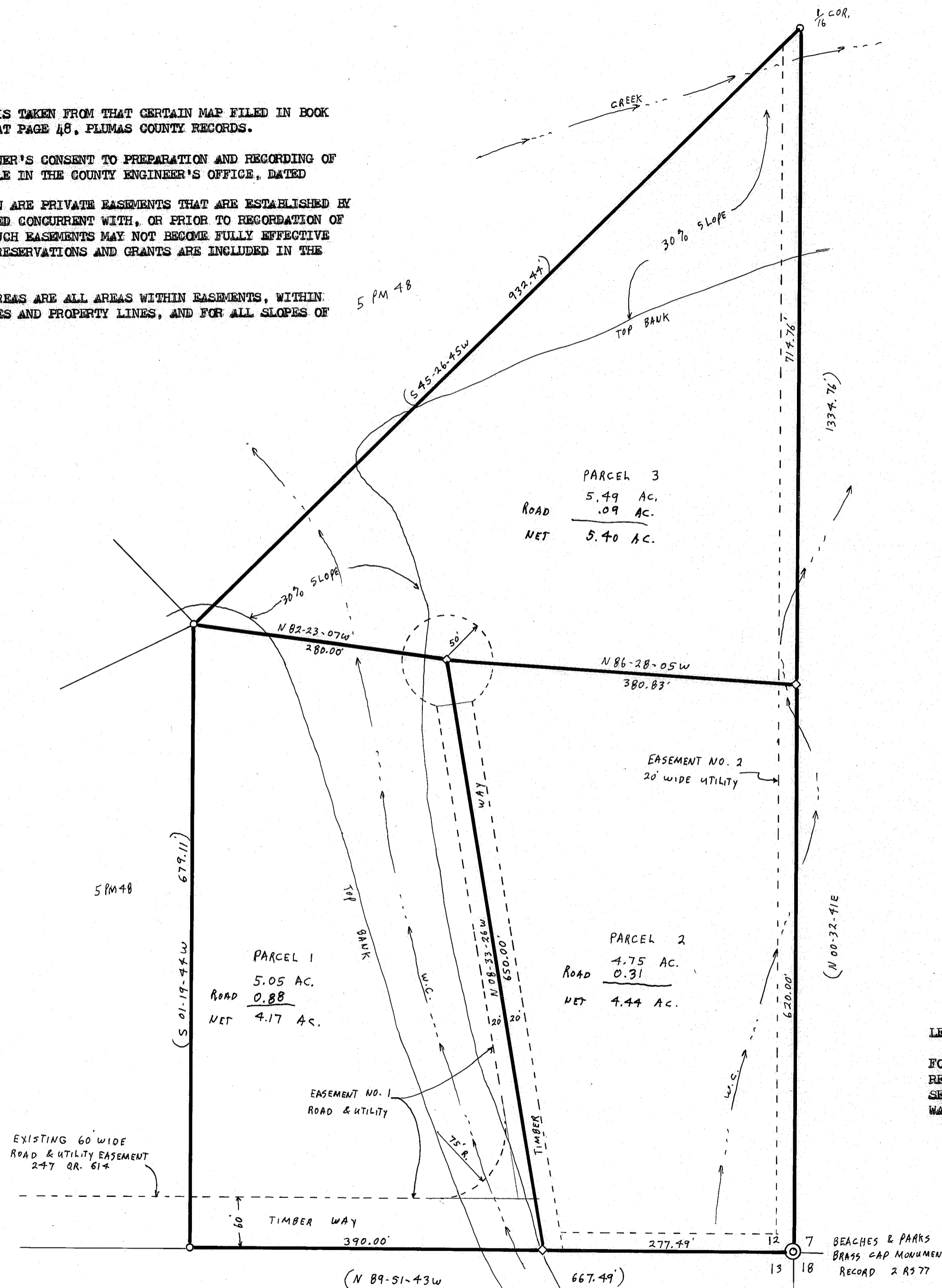
FEES \$5.00

FILE NO. 1974

RAYNELLE SLATEN
COUNTY RECORDER

BY Frances Nicol
DEPUTY

SCALE: 1"=100'



LEGEND

FOUND 3/4" IP TAGGED LS 3297
RECORD SECTION CORNER
SET 1/2" REBAR CAPPED LS 3297
WATERCOURSE



PARCEL MAP

OF A SUBDIVISION INTO THREE PARTS
FOR
SIERRA TIMBER RESOURCES SEPTEMBER 1978
PORTION OF SECTION 12, T. 22N., R. 11E., MM
PARCEL 4 IN BOOK 5 OF PARCEL MAPS AT PAGE 48
PLUMAS COUNTY, CALIFORNIA

GERALD C. HENDERSON
CIVIL ENGINEER-LAND SURVEYOR
P. O. BOX 1377
PORTOLA, CALIFORNIA