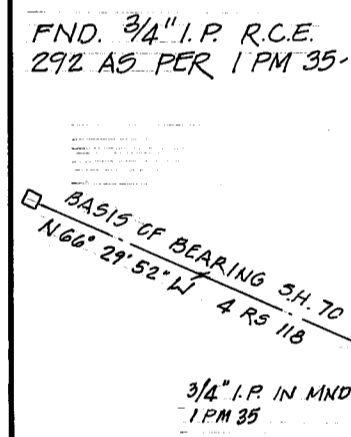


MAP LEGEND

- FOUND PROPERTY CORNER AS NOTED.
- SET PROPERTY CORNER - 1/2" REBAR CAPPED RCE 15265
- - - LEACH EXCLUSION LINE

MAP NOTE

- CERTIFICATE OF OWNER'S CONSENT TO THE PREPARATION AND RECORDING OF THIS MAP IS ON FILE IN THE COUNTY ENGINEER'S OFFICE DATED 12-4-78.



COUNTY SURVEYOR'S CERTIFICATE

THIS MAP CONFORMS WITH THE REQUIREMENTS OF THE SUBDIVISION MAP ACT AND LOCAL ORDINANCE.

DATED: 2-27-79 SIGNED: *Laurence J. Brock*
PLUMAS COUNTY SURVEYOR

ENGINEER'S CERTIFICATE

THIS MAP WAS PREPARED BY ME OR UNDER MY DIRECTION AND IS BASED UPON A FIELD SURVEY IN CONFORMANCE WITH THE REQUIREMENTS OF THE SUBDIVISION MAP ACT AT THE REQUEST OF GEORGE C. AND LAVERNE E. BOWERS ON OCTOBER, 1978. I HEREBY STATE THAT THE PARCEL MAP PROCEDURES OF THE LOCAL AGENCY HAVE BEEN COMPLIED WITH AND THAT THIS PARCEL MAP CONFORMS TO THE APPROVED TENTATIVE MAP AND THE CONDITIONS OF APPROVAL THEREOF WHICH WERE REQUIRED TO BE FILLED PRIOR TO THE PARCEL MAP. ALL MONUMENTS SHOWN AND DESCRIBED HEREON ARE IN PLACE AND ARE SUFFICIENT TO BE RETRACED.

Richard A. Lundy
RICHARD A. LUNDY
R. C. E. 15265

COUNTY TAX COLLECTOR'S CERTIFICATE

I, TAX COLLECTOR OF THE COUNTY OF PLUMAS, STATE OF CALIFORNIA, DO HEREBY CERTIFY THAT THERE ARE NO TAX LIENS AGAINST THE PARCELS, AS SHOWN HEREON, FOR UNPAID COUNTY, MUNICIPAL, OR LOCAL TAXES OR SPECIAL ASSESSMENTS COLLECTED AS TAXES, EXCEPT TAXES OR ASSESSMENTS NOT YET PAYABLE. TAXES OR ASSESSMENTS WHICH ARE A LIEN BUT NOT YET PAYABLE, ARE ESTIMATED TO BE IN THE AMOUNT OF \$ NONE.

Lois Alexander
LOIS ALEXANDER
PLUMAS COUNTY TAX COLLECTOR

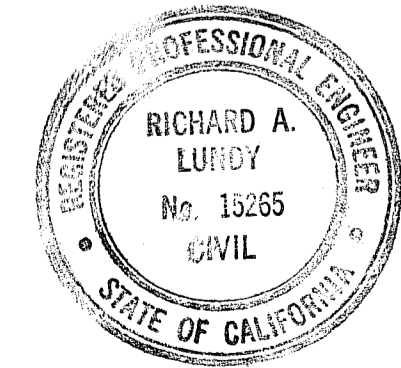
RECORDER'S CERTIFICATE

FILED THIS 28th DAY OF February, 1979, AT 11:30 AM., IN BOOK 6 OF Parcel Maps, AT PAGE 127, AT THE REQUEST OF *Plumas Co. Engineer*.

RAYNELLE SLATEN
COUNTY RECORDER

BY: *Isabelle Andrews*
DEPUTY

FEE: \$ 5.00
FILE NO.: 7006



PARCEL MAP

for
GEORGE AND LAVERNE BOWERS
WITHIN THE SW 1/4 OF SECTION 12, T. 23 N., R. 11 E.,
M. D. M.,
PLUMAS COUNTY, CALIFORNIA

LUNDY ENGINEERING
P.O. BOX 308
GRAEAGLE, CALIFORNIA

NOVEMBER, 1978