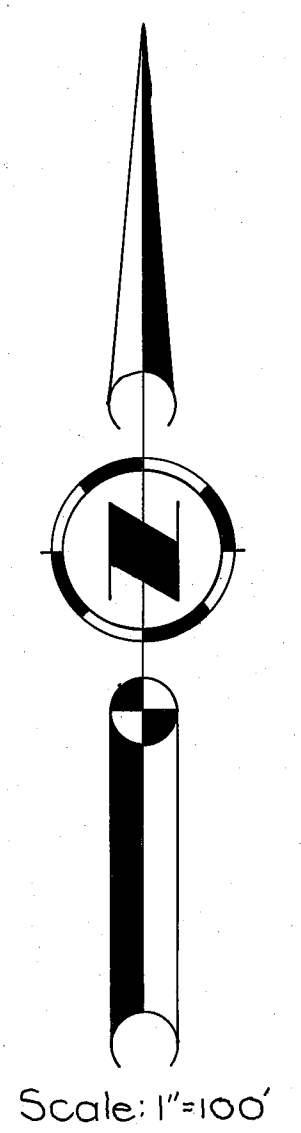


LEGEND:

- Found corner as noted
- Set 1/2" capped rebar LS 2843
- Found Highway monument

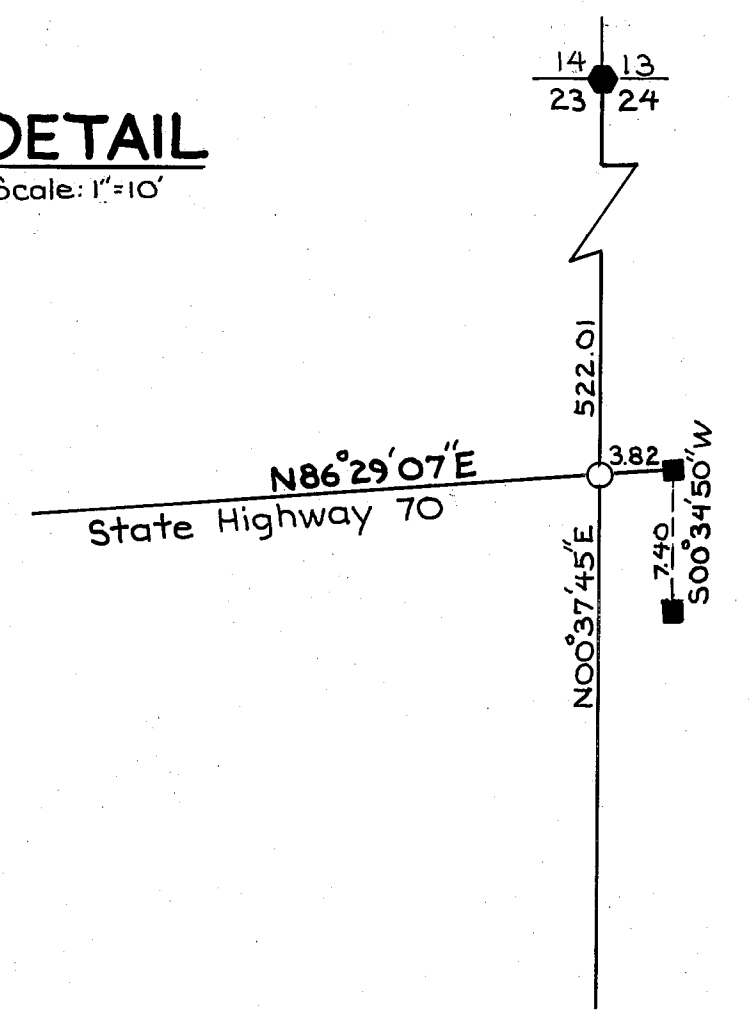
NOTE:

Leach exclusions: 50' from property lines, seasonal drainages and springs, 100' from highwater of rivers, 100' from wells and slopes greater than 30%.



DETAIL

Scale: 1"=10'



PARCEL MAP
for
WALTER C. BOND
A PORTION OF THE NE 1/4 OF SEC. 23
T25N, R8E, MDM.
PLUMAS COUNTY, CALIFORNIA
By
John W. Hamby LS 2843
Licensed Land Surveyor
Portola, California
September, 1978
Sheet 2 of 2