

COUNTY TAX COLLECTOR'S CERTIFICATE

I, TAX COLLECTOR OF THE COUNTY OF PLUMAS, STATE OF CALIFORNIA, DO HEREBY CERTIFY THAT THERE ARE NO TAX LIENS AGAINST THE PARCELS, AS SHOWN HEREON, FOR UNPAID COUNTY, MUNICIPAL, OR LOCAL TAXES OR SPECIAL ASSESSMENTS COLLECTED AS TAXES, EXCEPT TAXES OR ASSESSMENTS NOT YET PAYABLE. TAXES OR ASSESSMENTS WHICH ARE A LIEN, BUT NOT YET PAYABLE, ARE ESTIMATED TO BE IN THE AMOUNT OF already bonded.

*Lois Alexander*  
LOIS ALEXANDER  
PLUMAS COUNTY TAX COLLECTOR

SURVEYOR'S CERTIFICATE

THIS MAP WAS PREPARED BY ME OR UNDER MY DIRECTION AND WAS COMPILED FROM RECORD DATA AND IS BASED UPON A FIELD SURVEY IN CONFORMANCE WITH THE REQUIREMENTS OF THE SUBDIVISION MAP ACT AT THE REQUEST OF C. SANDERS IN JUNE 1978. I HEREBY STATE THAT THE PARCEL MAP PROCEDURES OF THE LOCAL AGENCY HAVE BEEN COMPLIED WITH AND THAT THIS PARCEL MAP CONFORMS TO THE APPROVED TENTATIVE MAP AND THE CONDITIONS OF APPROVAL THEREOF WHICH WERE REQUIRED TO BE FULFILLED PRIOR TO THE FILING OF THE PARCEL MAP.

*Gerald C. Henderson*  
GERALD C. HENDERSON LS 3297

COUNTY SURVEYOR'S CERTIFICATE

THIS MAP CONFORMS WITH THE REQUIREMENTS OF THE SUBDIVISION MAP ACT AND LOCAL ORDINANCE.

DATED: 9-26-78

*(by) Clifford R. Brown* RCE 20836  
PLUMAS COUNTY SURVEYOR

RECORDER'S CERTIFICATE

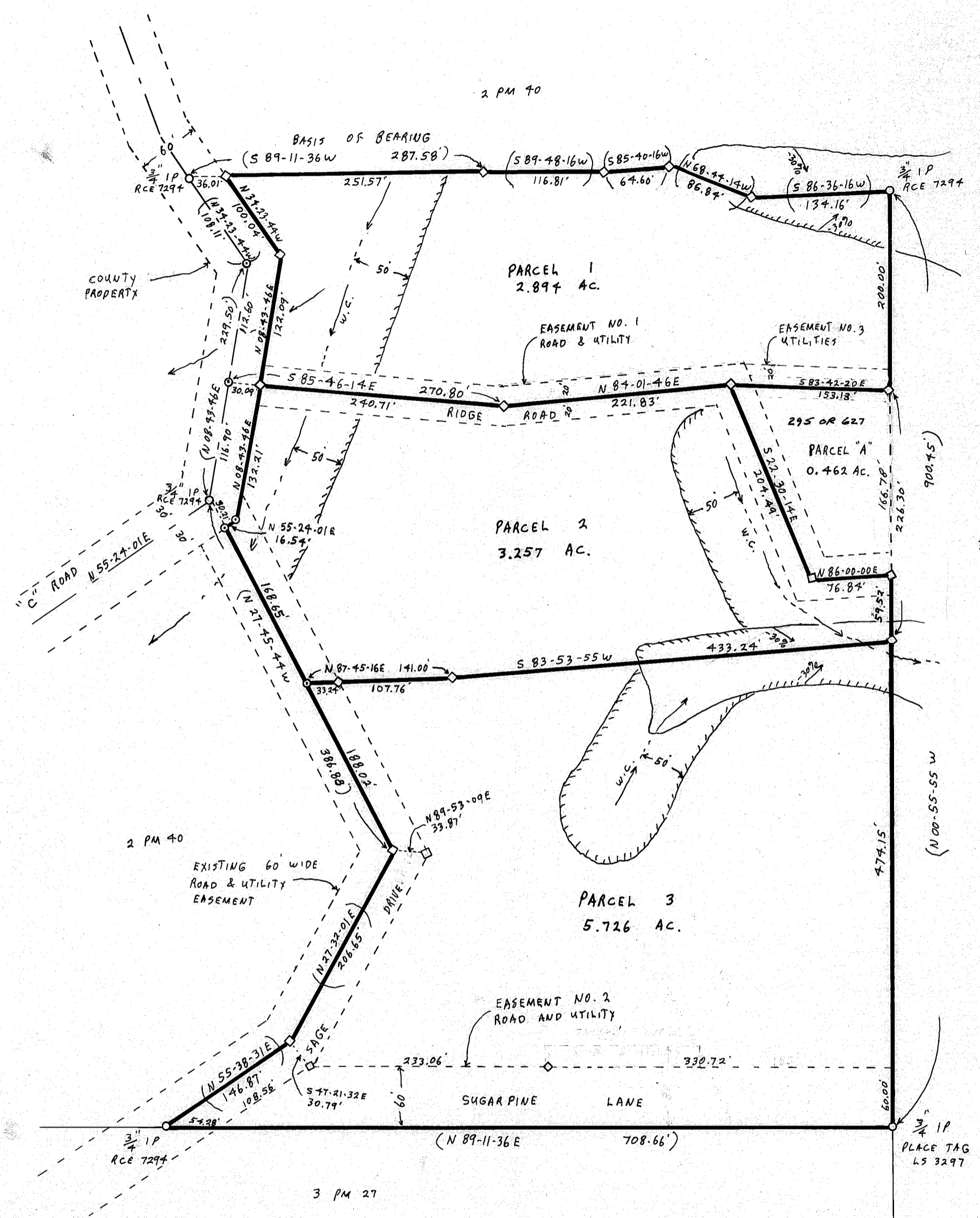
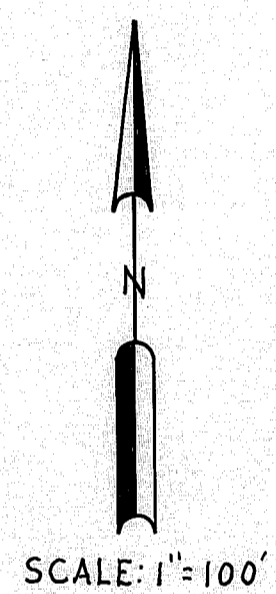
FILED THIS 26th DAY OF September, 1978, AT 8:55 A.M. IN BOOK 6 OF PARCEL MAPS, AT PAGE 80, AT THE REQUEST OF THE COUNTY ENGINEER.

FEE \$ 5.00

RAYNELLE SLATEN  
COUNTY RECORDER

FILE NO. 2823

BY *Catherine Sherman*  
DEPUTY



NOTES

BASIS OF BEARING IS TAKEN FROM THAT CERTAIN MAP FILED IN BOOK 2 OF PARCEL MAPS AT PAGE 40, PLUMAS COUNTY RECORDS.

CERTIFICATE OF OWNER'S CONSENT TO PREPARATION AND RECORDING OF THIS MAP IS ON FILE IN THE COUNTY ENGINEER'S OFFICE, DATED \_\_\_\_\_.

ROADS SHOWN HEREON ARE PRIVATE EASEMENTS THAT ARE ESTABLISHED BY A DECLARATION FILED CONCURRENT WITH, OR PRIOR TO RECORDATION OF THE FINAL MAP. SUCH EASEMENTS MAY NOT BECOME FULLY EFFECTIVE UNLESS AND UNTIL RESERVATIONS AND GRANTS ARE INCLUDED IN THE RESPECTIVE DEEDS.

LEACH EXCLUSION AREAS INCLUDE ALL AREAS WITHIN EASEMENTS, WITHIN 50' OF WATERCOURSES AND PROPERTY LINES, AND FOR ALL SLOPES OF 30% OR GREATER.

LEGEND

- FOUND CORNER AS IDENTIFIED HEREON
- ◇ SET 1/2" REBAR CAPPED LS 3297
- COMPUTED CORNER LOCATION
- W.C. WATERCOURSE
- LEACH SETBACK LINE



PARCEL MAP

OF A SUBDIVISION INTO THREE PARTS  
FOR  
CLAUDE AND MELLANIE SANDERS JUNE 1978  
PORTION OF SECTION 13, T. 22N., R. 12E., MDM  
PLUMAS COUNTY, CALIFORNIA

GERALD C. HENDERSON  
LICENSED LAND SURVEYOR  
P. O. BOX 1377  
PORTOLA, CALIFORNIA

Dec. 1, 1978 2950R627