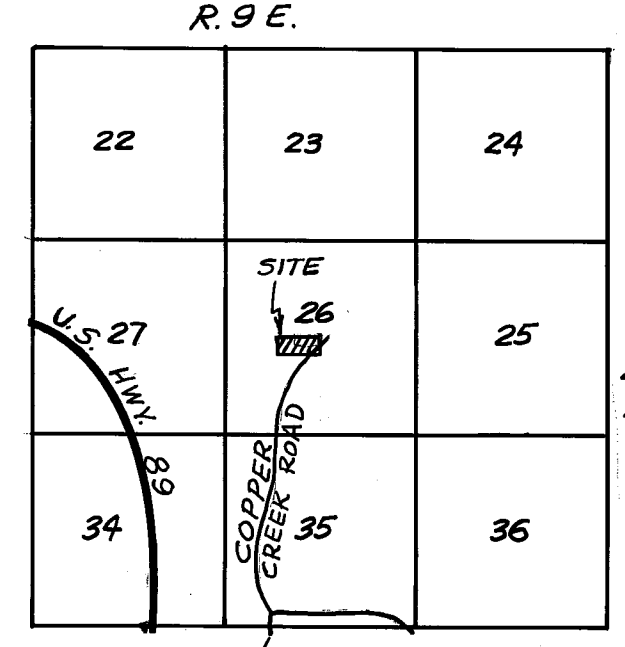


"OTHER LANDS OF JOHN LINDSKOG"  
SEE BOOK 4 OF RECORD OF SURVEYS  
AT PAGE 129

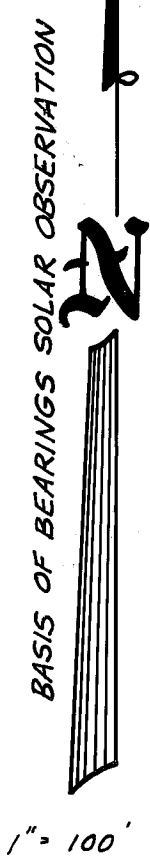
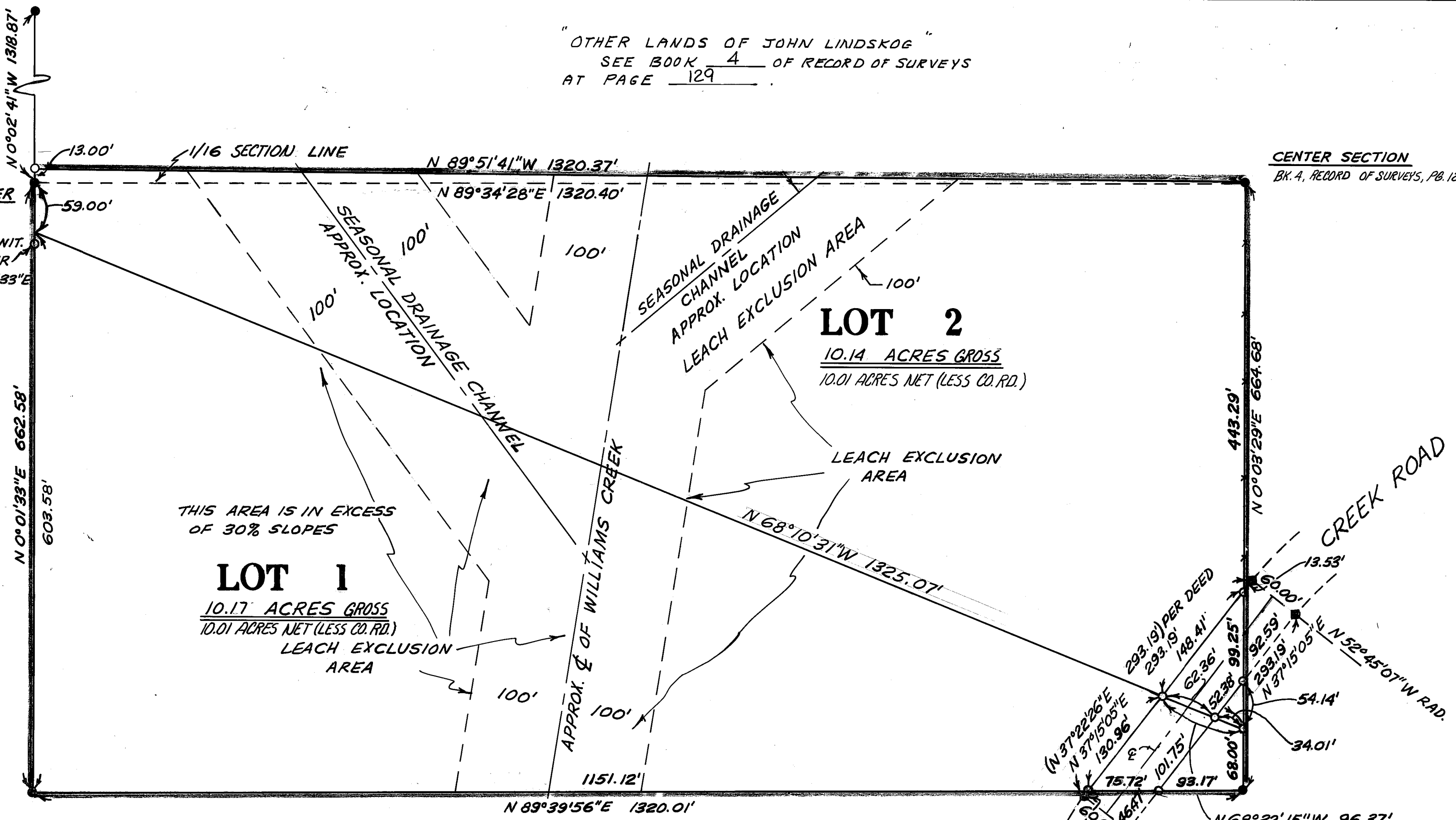
CENTER SECTION  
BK. 4, RECORD OF SURVEYS, PG. 129



TO GREENVILLE  
1/2 MILE

**LEGEND**

- — SET A 5/8" REBAR 18" LONG DOWN 16" & ALUMINUM CAP MARKED L.S. 4036
- — F.D. A 5/8" REBAR 18" LONG MRKD L.S. 4036 PER 4 R.O.S. 129
- — FOUND 1/2" IRON PIPE MARKED R.C.E. 13528



**OWNER'S CERTIFICATE**

WE HEREBY CERTIFY THAT WE ARE OWNERS OF THE LAND SHOWN ON THIS PARCEL MAP AND CONSENT TO PREPARATION AND RECORDING OF THIS MAP, AND THAT WE ARE THE ONLY PERSONS WHOSE CONSENT IS REQUIRED TO PASS TITLE TO SAID LANDS.

OWNERS SIGNATURE: *John Lindskog*  
*John Lindskog*

**COUNTY TAX COLLECTOR'S CERTIFICATE**

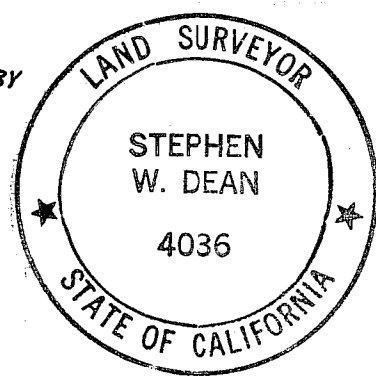
I, TAX COLLECTOR OF THE COUNTY OF PLUMAS, STATE OF CALIFORNIA, DO HEREBY CERTIFY THAT THERE ARE NO TAX LIENS AGAINST THE PARCELS, AS SHOWN HEREON, FOR UNPAID COUNTY, MUNICIPAL, OR LOCAL TAXES OR SPECIAL ASSESSMENTS COLLECTED AS TAXES, EXCEPT TAXES OR ASSESSMENTS NOT YET PAYABLE. TAXES OR ASSESSMENTS WHICH ARE A LIEN BUT NOT YET PAYABLE, ARE ESTIMATED TO BE IN THE AMOUNT OF \$1810.00

*Lois Alexander*  
LOIS ALEXANDER  
PLUMAS COUNTY TAX COLLECTOR

**SURVEYOR'S CERTIFICATE**

THIS MAP WAS PREPARED BY ME OR UNDER MY DIRECTION AND IS BASED UPON A FIELD SURVEY IN CONFORMANCE WITH THE REQUIREMENTS OF THE SUBDIVISION MAP ACT AT THE REQUEST OF JOHN LINDSKOG, et. al. ON JAN. 1977. I HEREBY STATE THAT THE PARCEL MAP PROCEDURES OF THE LOCAL AGENCY HAVE BEEN COMPLIED WITH AND THAT THIS PARCEL MAP CONFORMS TO THE APPROVED TENTATIVE MAP AND THE CONDITIONS OF APPROVAL THEREOF WHICH WERE REQUIRED TO BE FULFILLED PRIOR TO THE FILING OF THE PARCEL MAP.

*Stephen W. Dean*  
STEPHEN W. DEAN L.S. 4036



**COUNTY SURVEYOR'S CERTIFICATE**

THIS MAP CONFORMS WITH THE REQUIREMENTS OF THE SUBDIVISION MAP ACT AND LOCAL ORDINANCE.

DATED: 5-1-78  
SIGNED: *Larry A. Fites*  
LARRY A. FITES, R.C.E. 13225  
PLUMAS COUNTY ENGINEER

**RECORDER'S CERTIFICATE**

FILED THIS 1ST DAY OF May, 1978, AT 8:38 A.M. IN BOOK 6 OF PLUMAS COUNTY RECORDS, AT THE REQUEST OF STEPHEN DEAN

SIGNED: \_\_\_\_\_  
RAYNELLE SLATEN  
PLUMAS COUNTY RECORDER

FEE: \$ 5.00  
FILE NO. 7802

BY: *Catherine Shuman*  
DEPUTY

**NOTE**

TENTATIVE PARCEL MAP APPROVED BY PLUMAS COUNTY PLANNING COMMISSION DEC. 16, 1976

**PARCEL MAP**

OF A  
SUBDIVISION INTO TWO PARCELS

FOR  
JOHN LINDSKOG, et. al.

WITHIN THE N. 1/2 OF THE N.E. 1/4  
OF THE S.W. 1/4 OF SECTION 26,  
T. 27 N., R. 9 E. M.D.M.  
PLUMAS COUNTY, CALIFORNIA

STEPHEN W. DEAN L.S. 4036  
P. O. BOX 482  
FALL RIVER MILLS, CALIF. 96028

JANUARY, 1977 SCALE: 1" = 100'