

## BASIS OF BEARING:

The North line of Parcel 1 shown as S 87° 51' 59" E on the Parcel Map recorded in Book 3 of Parcel Maps at Page 123, Plumas County Records.

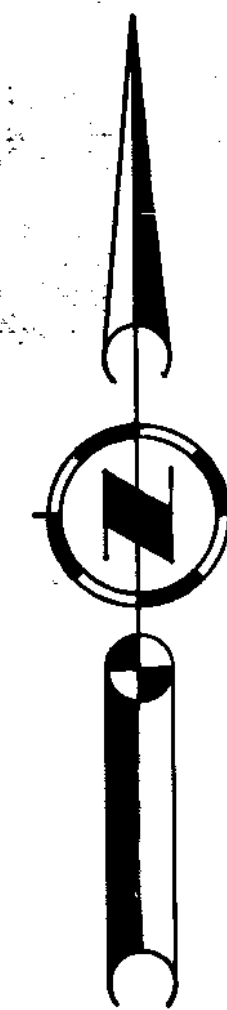
## LEGEND:

- = Found 3/4" I.P., LS 2843
- = Set 3/8" rebar with aluminum cap, LS 2843
- = Found monument as noted.
- P— = Overhead power line
- U— = Underground Cable
- (R) = Record information
- (M) = Measured

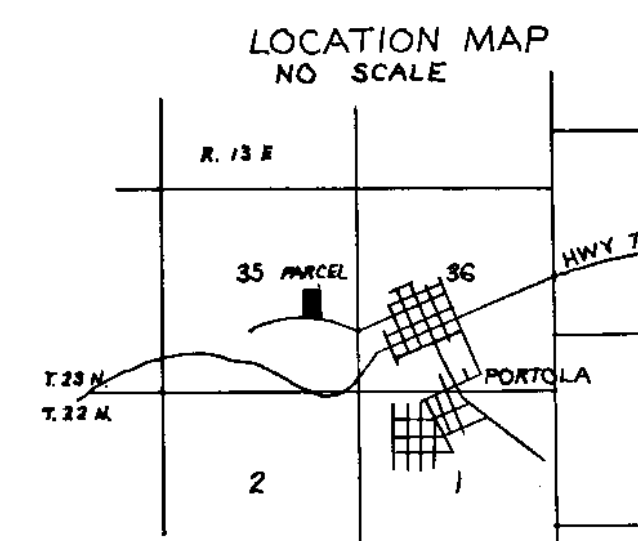
## NOTES:

This map is a division of Parcel 1 as shown on P.M. 3/123

Certificate of owner's consent to preparation and recording of this map is on file in the County Engineers Office.

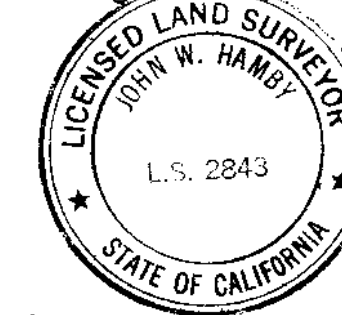


SCALE: 1"=60'



## SURVEYOR'S CERTIFICATE

This map was prepared by me or under my direction and is based upon a field survey in conformance with the requirements of the Subdivision Map Act at the request of Joseph E. Tumbusch on August 2, 1977. I hereby state that the parcel map procedures of the local agency have been complied with and that this parcel map conforms to the approved tentative map and the conditions of approval thereof which were required to be fulfilled prior to the filing of the parcel map.



*John W. Hamby*  
John W. Hamby LS 2843

## COUNTY SURVEYOR'S CERTIFICATE

This map conforms with the requirements of the Subdivision Map Act and local ordinance.  
Date: 10-26-1977.

*Larry A. Fites*  
(by) Clifford R. Brown, Asst.  
Larry A. Fites RCE 13225  
Plumas County Engineer

## COUNTY TAX COLLECTOR'S CERTIFICATE

I, Tax Collector of the County of Plumas, State of California, do hereby certify that there are no tax liens against the Parcels, as shown hereon, for unpaid county, local or municipal taxes or special assessments collected as taxes, except taxes or assessments which are not yet payable. Taxes or assessments which are a lien but not yet payable, are estimated to be in the amount of \$199.72

*Lois Alexander*  
Lois Alexander  
Plumas County Tax Collector

## RECORDER'S CERTIFICATE

Filed this 26 day of Oct., 1977, at 3:20 P.M. in Book 6 of Parcel Maps, at Page 21, at the request of the County Engineer.  
Fee \$5.00  
File No. 3847

Raynell Staten  
County Recorder

by *Theresa Rose*  
Deputy

PARCEL MAP  
FOR

JOSEPH E. TUMBUSCH

A PORTION OF THE S.E. 1/4 OF SEC. 35, T.23N., R.13E.,  
M.D.B. & M.

PLUMAS COUNTY, CALIFORNIA

BY  
JOHN W. HAMBY LS 2843  
LICENSED LAND SURVEYOR  
P.O. BOX 842, 832 5571  
PORTOLA, CALIFORNIA