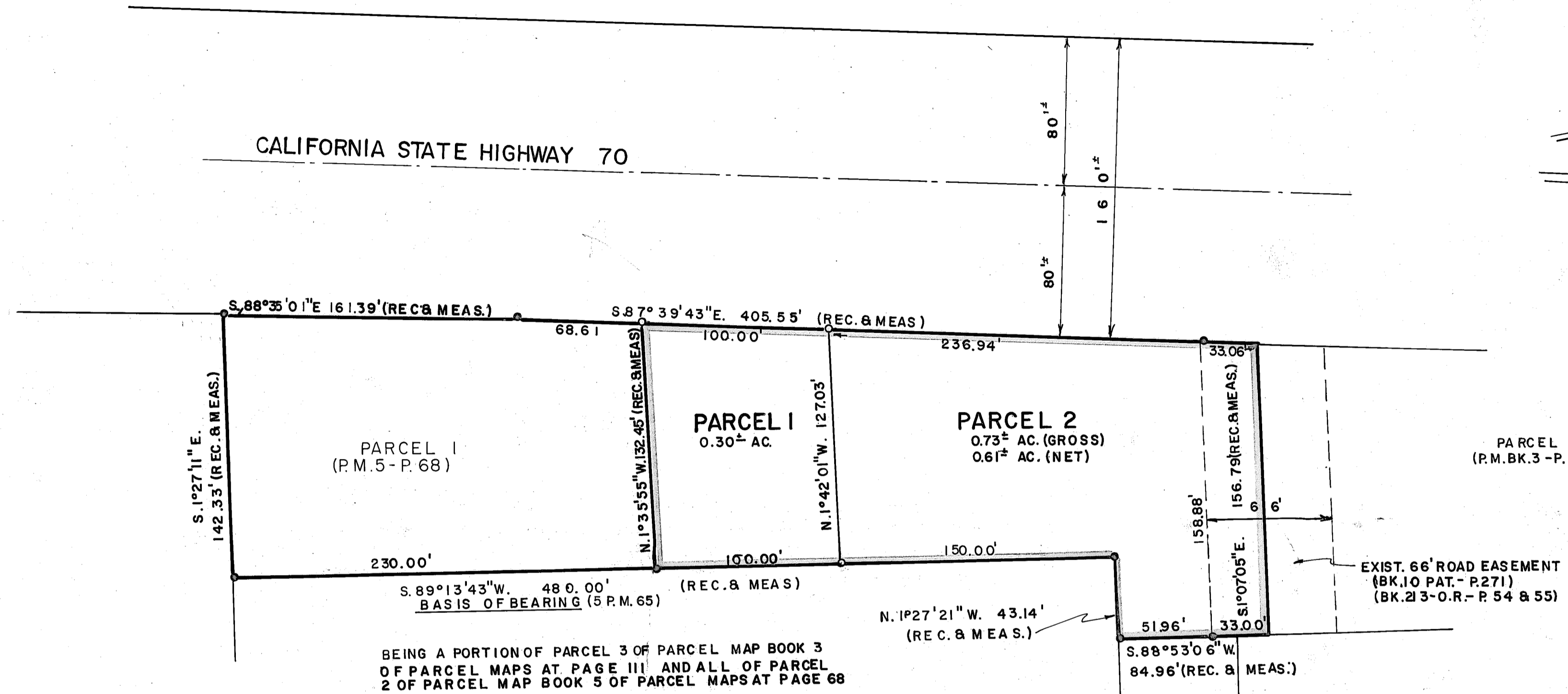


LOCATION MAP
NO SCALE



LEGEND

- Found 1/2" Steel Pin with plastic cap stamped "R0111173"
- Set 1/2" Steel Pin with plastic cap stamped L.S. 3297
- P.M. Parcel Map
- Pat. Patents
- Rec. Record (from deed, record map, etc.)
- Meas. Measured
- Bk. Book
- P. Page
- Ac. Acre
- O.R. Official Records, Plumas County records

NOTE

Tentative Parcel Map approved by Plumas County Zoning Administrator July 7, 1977.

NOTE -
THE ACCESS FROM HIGHWAY 70 TO PARCEL 1 SHALL NOT EXCEED 60'

OWNER'S CERTIFICATE

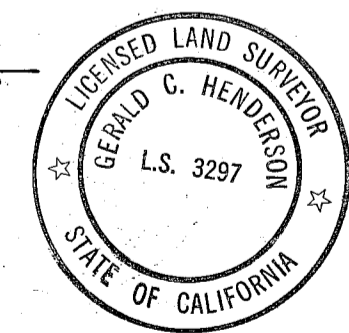
Prior to the filing of this map a letter, signed by the owners of the lands shown hereon, was filed with the County Engineer certifying that the signers are the owners of the lands shown on said map and that they consent to the preparation and filing of this map and that they are the only persons whose consent is required to pass title to said lands.

PLUMAS COUNTY CEMETERY
(O.R. 201-R 40)

SURVEYOR'S CERTIFICATE

This map was prepared by me or under my direction and is based upon a field survey in conformance with the requirements of the Subdivision Map Act at the request of Harold Tweedle and Diana G. Tweedle on July 5, 1977. I hereby state that the parcel map procedures of the local agency have been complied with and that this parcel map conforms to the approved tentative map and the conditions of approval thereof which were required to be fulfilled prior to the filing of the parcel map.

Gerald C. Henderson
Gerald C. Henderson, L.S. 3297



COUNTY ENGINEER'S CERTIFICATE

This map conforms with the requirements of the Subdivision Map Act and local ordinance.
Dated: 8-2-77

Harry A. Fites
Harry A. Fites, R.C.E. 13225
Plumas County Engineer

COUNTY TAX COLLECTOR'S CERTIFICATE

I, Tax Collector of the County of Plumas, State of California, do hereby certify that there are no tax liens against the Parcel, as shown hereon, for unpaid county, municipal, or local taxes or special assessments collected as taxes, except taxes or assessments not yet payable. Taxes or assessments which are a lien but not yet payable are estimated to be in the amount of \$ 877.00.

Lois Alexander
Lois Alexander
Plumas County Tax Collector

RECORDER'S CERTIFICATE

Filed this 2nd day of August, 1977, at 11:00 A.M. in Book 6 of Parcel Maps at Page 6 at the request of Gerald C. Henderson.

Raynelle Slaten
Plumas County Recorder
By: *Patricia Rose*
Deputy

Fee \$5.00 1031
File No.

SIERRA SURVEYING
LAND SURVEYOR
P.O. BOX 1199
QUINCY, CALIFORNIA

PARCEL MAP
OF
SUBDIVISION INTO TWO PARCELS
FOR
HAROLD AND DIANA G. TWEEDLE, JR.
WITHIN
NW1/4 SEC. 19, T. 24N., R. 10E., M.D.M.
PLUMAS COUNTY, CALIFORNIA