

NOTES

BASIS OF BEARING IS TAKEN FROM THAT CERTAIN MAP FILED IN BOOK 1 OF PARCEL MAPS AT PAGE 4, PLUMAS COUNTY RECORDS.

CERTIFICATE OF OWNER'S CONSENT TO PREPARATION AND RECORDING OF THIS MAP IS ON FILE IN THE COUNTY ENGINEER'S OFFICE.

DEED REFERENCE IS BOOK 168 OF OFFICIAL RECORDS AT PAGE 166.

COUNTY TAX COLLECTOR'S CERTIFICATE

I, TAX COLLECTOR OF THE COUNTY OF PLUMAS, STATE OF CALIFORNIA, DO HEREBY CERTIFY THAT THERE ARE NO TAX LIENS AGAINST THE PARCELS, AS SHOWN HEREON, FOR UNPAID COUNTY, MUNICIPAL, OR LOCAL TAXES OR SPECIAL ASSESSMENTS COLLECTED AS TAXES, EXCEPT TAXES OR ASSESSMENTS NOT YET PAYABLE. TAXES OR ASSESSMENTS WHICH ARE A LIEN BUT NOT YET PAYABLE ARE ESTIMATED TO BE IN THE AMOUNT OF NONE.

Douglas S. Redstreake  
DOUGLAS S. REDSTREAKE  
PLUMAS COUNTY TAX COLLECTOR

SURVEYOR'S CERTIFICATE

THIS MAP WAS PREPARED BY ME OR UNDER MY DIRECTION AND IS BASED UPON A FIELD SURVEY IN CONFORMANCE WITH THE REQUIREMENTS OF THE SUBDIVISION MAP ACT AT THE REQUEST OF NORTHWEST PACIFIC RESOURCES IN AUGUST 1976. I HEREBY CERTIFY THAT IT CONFORMS TO THE APPROVED TENTATIVE MAP AND THE CONDITIONS OF APPROVAL THEREOF.

Gerald C. Henderson  
GERALD C. HENDERSON LS 3297

COUNTY SURVEYOR'S CERTIFICATE

THIS MAP CONFORMS WITH THE REQUIREMENTS OF THE SUBDIVISION MAP ACT AND LOCAL ORDINANCE.

DATED: 11-9-76

Larry A. Fites  
LARRY A. FITES RCE 13225  
COUNTY ENGINEER

RECORDER'S CERTIFICATE

FILED THIS 23rd DAY OF December, 1976, AT 9:45 A.M. IN BOOK 5 OF PARCEL MAPS AT PAGE 121, AT THE REQUEST OF GERALD C. HENDERSON.

FEES \$5.00

FILE NO. 4729

Raynelle Slaten  
RAYNELLE SLATEN  
COUNTY RECORDER  
by Dana H. Brown

PARCEL MAP

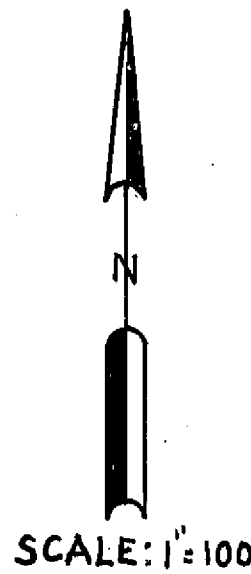
OF A SUBDIVISION INTO FOUR PARTS

FOR RUBY I. COY. AUGUST 1976

PORTION OF SECTION 13, T. 24N., R. 9E., MDM

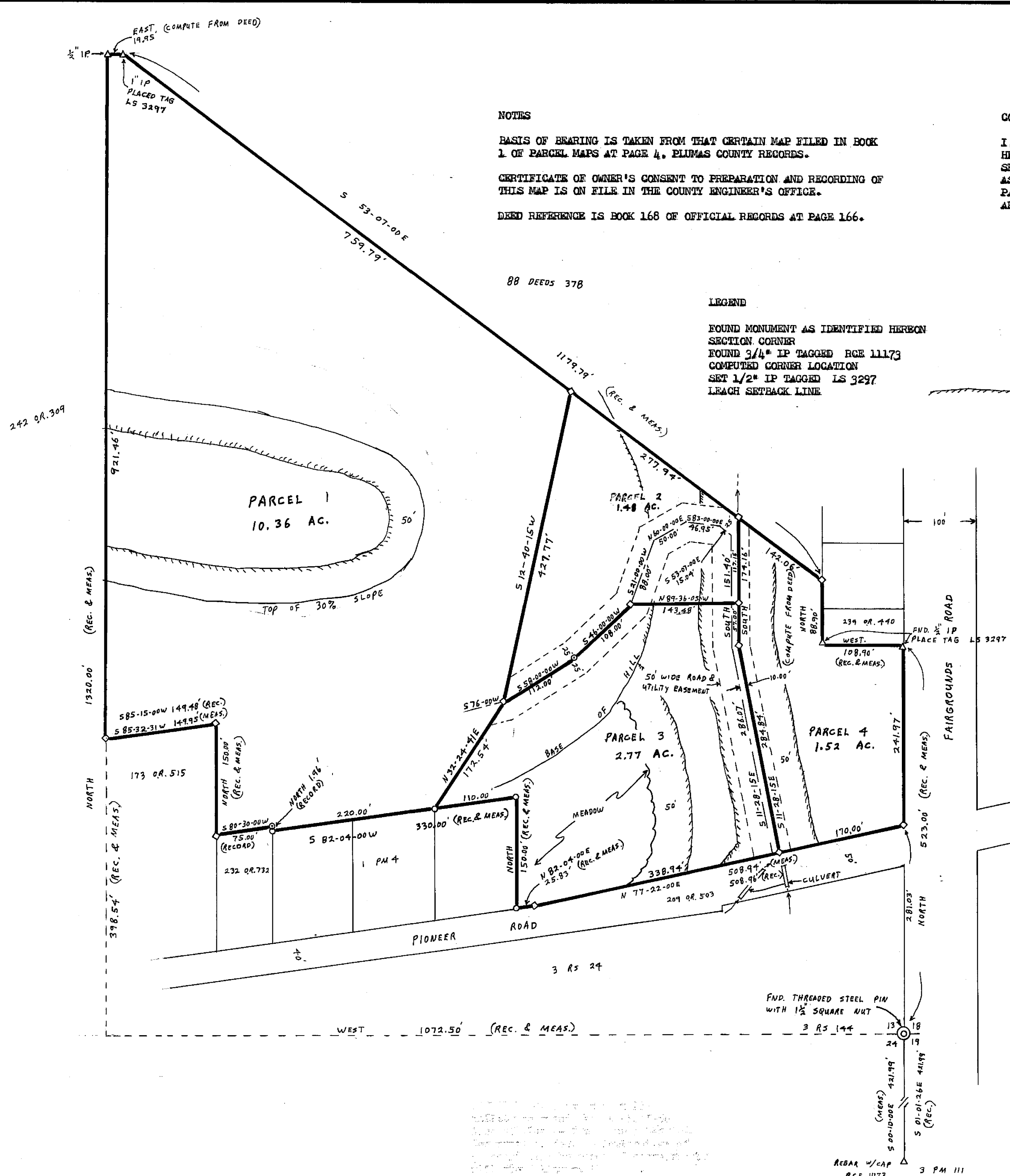
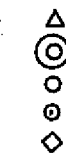
PLUMAS COUNTY, CALIFORNIA

GERALD C. HENDERSON  
LICENSED LAND SURVEYOR  
P. O. BOX 13  
PORTOLA, CALIFORNIA



LEGEND

FOUND MONUMENT AS IDENTIFIED HEREON  
SECTION CORNER  
FOUND 3/4" IP TAGGED RCE 11173  
COMPUTED CORNER LOCATION  
SET 1/2" IP TAGGED LS 3297  
LEACH SETBACK LINE



Dec of ESM 263 OR 38