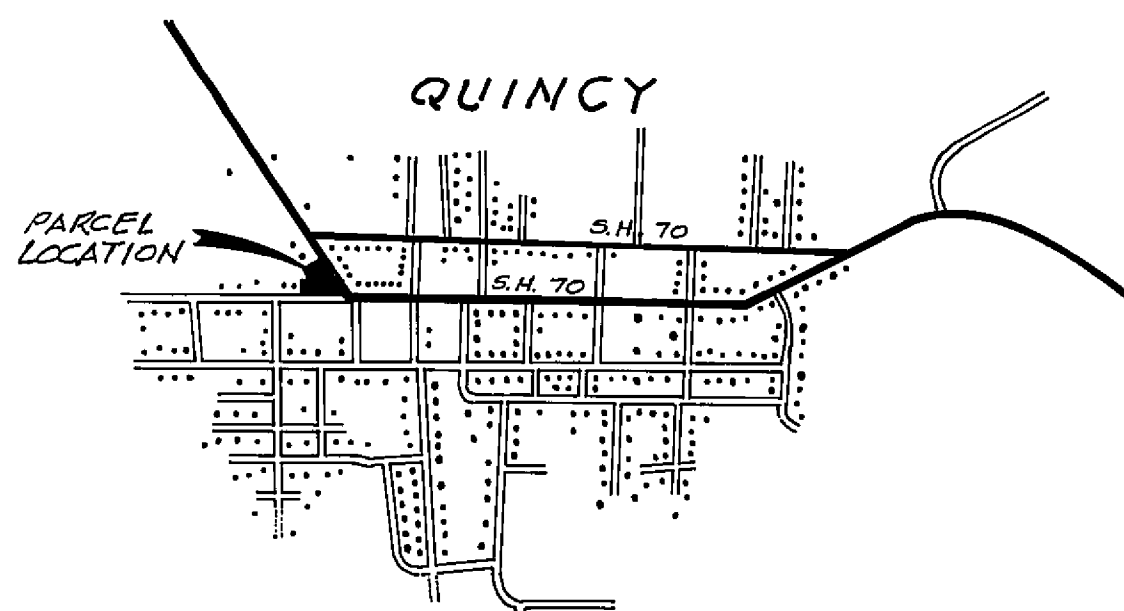


MAP LEGEND

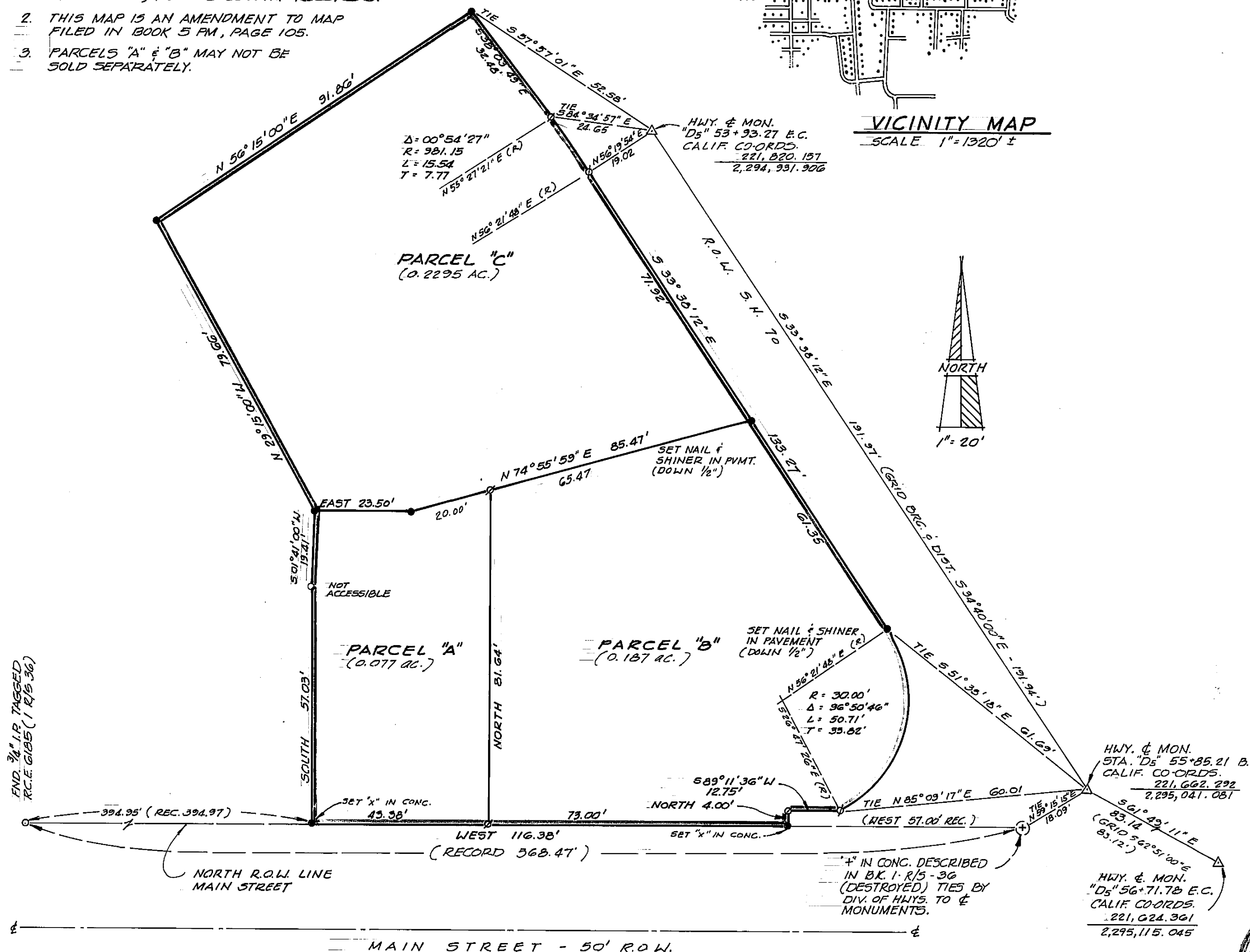
- SET 1/2" REBAR CAPPED R.C.E. 15265 OR AS NOTED.
- ⊠ COMPUTED CORNER
- △ FND. STATE DIV. OF HIGHWAYS MONUMENT
- FND. PROPERTY CORNER AS NOTED.

MAP NOTES

1. THE BASIS OF BEARING IS THE NORTH RIGHT OF WAY LINE OF MAIN STREET GIVEN AS WEST IN BOOK 1, R/5 AT PAGE 36, PLUMAS COUNTY RECORDS.
2. THIS MAP IS AN AMENDMENT TO MAP FILED IN BOOK 5 PM, PAGE 105.
3. PARCELS "A" & "B" MAY NOT BE SOLD SEPARATELY.



VICINITY MAP
SCALE 1" = 1320' ±



ENGINEER'S CERTIFICATE

THIS MAP WAS PREPARED BY ME OR UNDER MY DIRECTION AND IS BASED UPON A FIELD SURVEY IN CONFORMANCE WITH THE REQUIREMENTS OF THE SUBDIVISION MAP ACT AT THE REQUEST OF EVERETT E. AND FAYE J. BEY ON OCTOBER 22, 1976. I HEREBY CERTIFY THAT IT CONFORMS TO THE APPROVED TENTATIVE MAP AND THE CONDITIONS OF APPROVAL THEREOF.

Richard A. Lundy
RICHARD A. LUNDY
R.C.E. 15265

COUNTY ENGINEER'S CERTIFICATE

THIS MAP CONFORMS WITH THE REQUIREMENTS OF THE SUBDIVISION MAP ACT AND LOCAL ORDINANCE.

DATED 10-28-76 SIGNED: *Ray A. Fites*
RAY A. FITES, R.C.E. 13225
COUNTY ENGINEER

RECORDER'S CERTIFICATE

FILED THIS 28TH DAY OF October, 1976, AT 2:30 P.M. IN BOOK 5 OF Parcel Maps AT PAGE 108, AT THE REQUEST OF EVERETT E. AND FAYE J. BEY.

SIGNED: *Raynelle Slatten*
RAYNELLE SLATTEN
COUNTY RECORDER
By *Lona Brown*

COUNTY TAX COLLECTOR'S CERTIFICATE

I, TAX COLLECTOR OF THE COUNTY OF PLUMAS, STATE OF CALIFORNIA, DO HEREBY CERTIFY THAT THERE ARE NO TAX LIENS AGAINST THE PARCELS, AS SHOWN HEREON, FOR UNPAID COUNTY, MUNICIPAL, OR LOCAL TAXES OR SPECIAL ASSESSMENTS COLLECTED AS TAXES, EXCEPT TAXES OR ASSESSMENTS NOT YET PAYABLE. TAXES OR ASSESSMENTS WHICH ARE A LIEN BUT NOT YET PAYABLE ARE ESTIMATED TO BE IN THE AMOUNT OF \$2490.00.

Douglas S. Redstreak
DOUGLAS S. REDSTREAK
PLUMAS COUNTY TAX COLLECTOR

AMENDED PARCEL MAP

A PORTION OF LOTS 3 & 4, BLOCK 2, OF QUINCY TOWNSITE & SEC. 14, T. 24 N., R. 3 E., M.D.M. QUINCY, PLUMAS CO., CALIFORNIA

EVERETT E. & FAYE J. BEY &
GEORGE F. & ELDA E. COTTER

LUNDY ENGINEERING
P.O. BOX 308
GRABAGLE, CALIF.
R.C.E. 15265

OCTOBER, 1976

