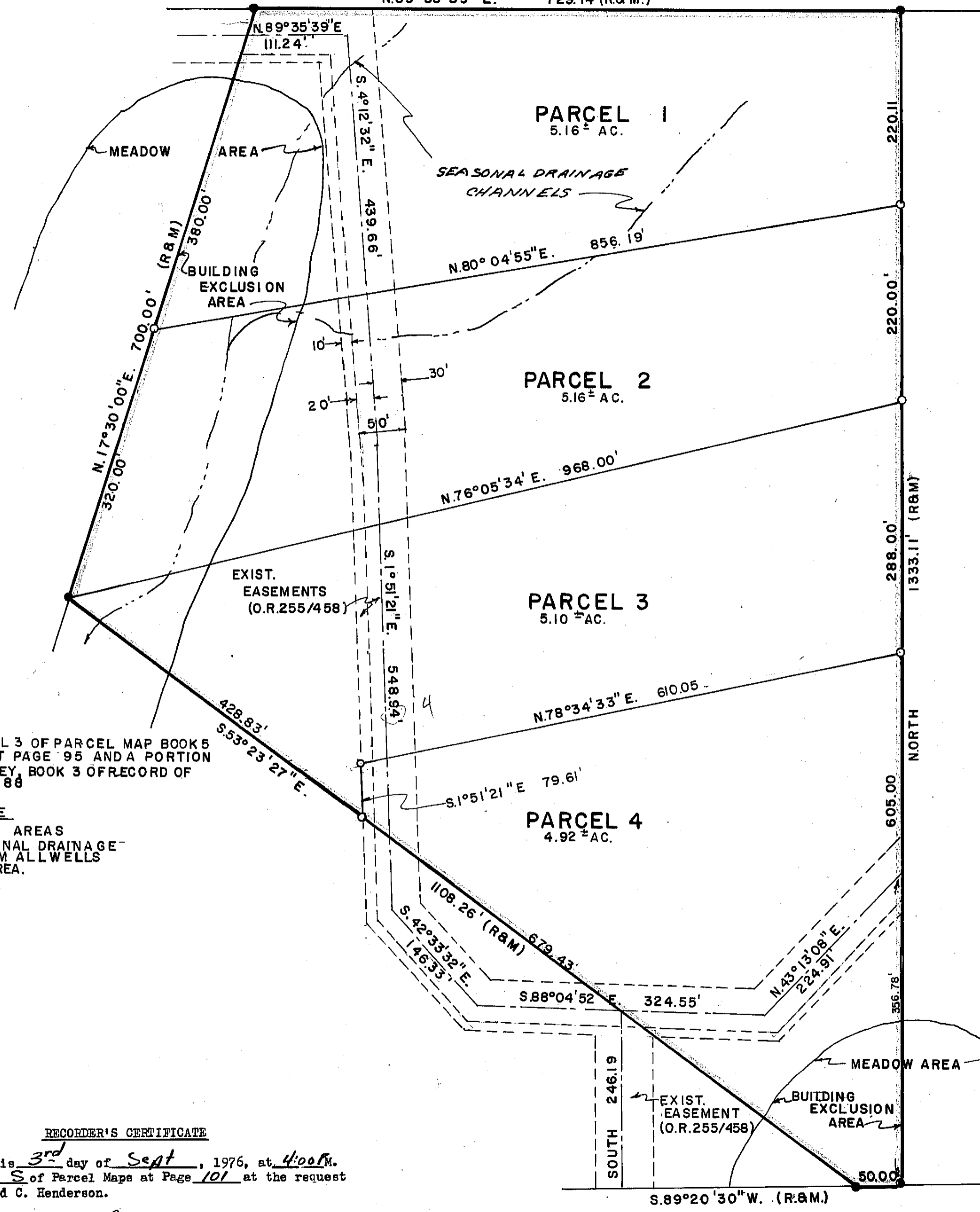
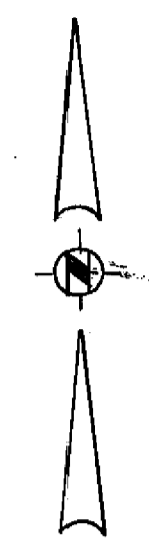


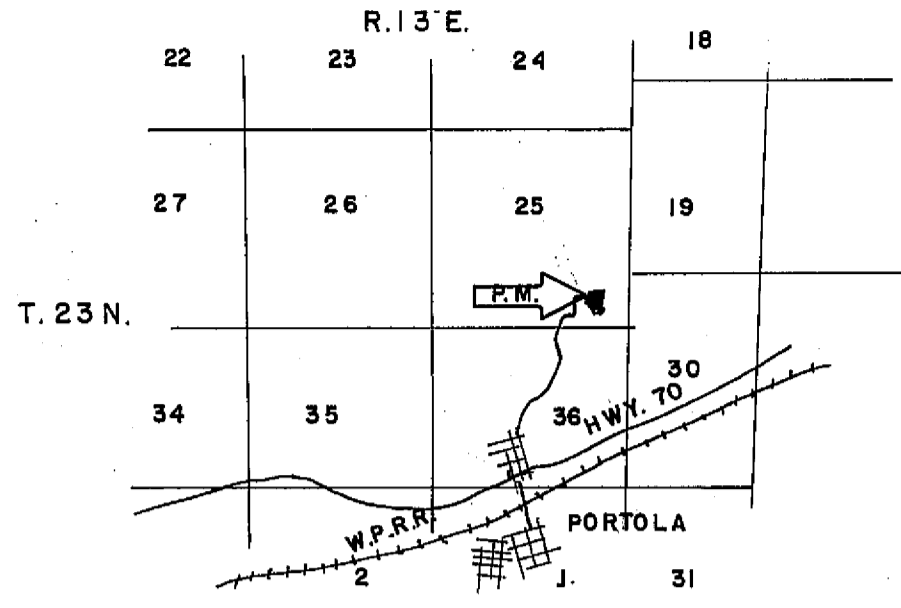
BASIS OF BEARINGS
 N.89°35'39" E. 729.14 (R&M.)



- LEGEND**
- Found 1/4" steel pin with plastic cap stamped L.S. 3297 except as noted
 - Set 3/4" steel pin with plastic cap stamped L.S. 3297
 - Rec. Record (From deed, Record Map, etc.)
 - Meas. Measured
 - O.R. Official Record
 - BK. Book
 - P. Page
 - R/S Record of Survey
 - Ac. Acre
 - I.P. Iron Pipe
 - L.S. Land Surveyor
 - R.C.E. Registered Civil Engineer
 - (R&M) Record and Measured



SCALE 1"=100'



LOCATION MAP
NO SCALE

NOTE
 Tentative Parcel Map approved by Plumas County Zoning Administrator August 19, 1976.

NOTE
 (OWNER'S CERTIFICATE)

Prior to the filing of this map a letter, signed by the owners of the land shown hereon, was filed with the County Engineer certifying that the signers are the owners of the lands shown on said map and that they are the only persons whose consent is required to pass title to said lands.

COUNTY ENGINEER'S CERTIFICATE

This map conforms with the requirements of the Subdivision Map Act and local ordinance.

Dated: 9-3-76

Larry A. Fites by *Clifford R. Brown, assistant*
 Larry A. Fites, R.C.E. 13225
 Plumas County Engineer

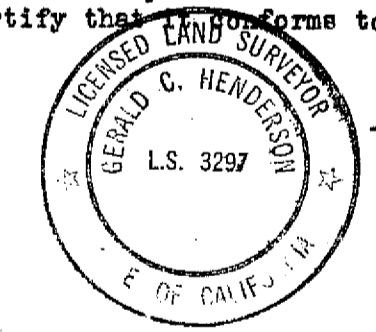
COUNTY TAX COLLECTOR'S CERTIFICATE

I, Tax Collector of the County of Plumas, State of California, do hereby certify that there are no liens against the parcels as shown hereon for unpaid county, municipal, or local taxes, or special assessments collected as taxes, except taxes or assessments not yet payable. Taxes or assessments which are a lien but not yet payable are estimated to be in the amount of \$NONE.

Douglas S. Redstreake
 Douglas S. Redstreake
 Plumas County Tax Collector

SURVEYOR'S CERTIFICATE

This map was prepared by me or under my direction and is based upon a field survey in conformance with the requirement of the Subdivision Map Act at the request of Raymond L. and Wanda L. Goodman and Welch Realty A Calif. Corp. on August 16, 1976. I hereby certify that it conforms to the approved tentative map and the conditions of approval thereof.



Gerald C. Henderson
 Gerald C. Henderson, L.S. 3297

PARCEL MAP
 OF
SUBDIVISION INTO FOUR PARCELS
 FOR
LYNN WELCH REALTY A CALIFORNIA CORP.
 AND
RAYMOND L. AND WANDA L. GOODMAN
 WITHIN
SI/2 SE1/4, SEC.25, T.23N., R.13E., M.D.M.
 PLUMAS COUNTY, CALIFORNIA

RECORDER'S CERTIFICATE

Filed this 3rd day of Sept, 1976, at 4:00 P.M.
 in Book 5 of Parcel Maps at Page 101 at the request
 of Gerald C. Henderson.

Dorothy Neer Marley
 Dorothy Neer Marley
 Plumas County Recorder
 by *Lena S. Brown*

SIERRA SURVEYING
 LAND SURVEYOR
 P.O. BOX 1199
 QUINCY, CALIFORNIA

Fee \$5.00
 File No. 1791